

LOC/DME I-PKI 111.95	APP CRS 170°	Rwy ldg 7800
Chan 56 (Y)		TDZE 499
		Apt Elev 501

ILS or LOC RWY 17L
LOUISVILLE MUHAMMAD ALI INTL (SDF)

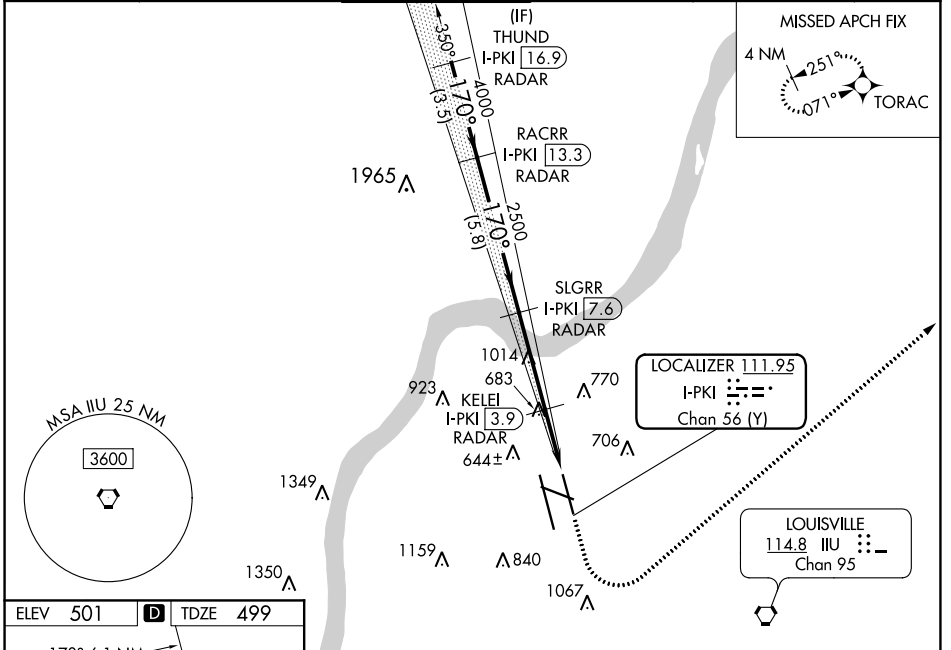
RNAV 1-GPS required.
DME or RADAR required.

▽ Circling Rwy 11 NA at night. Simultaneous approach authorized.
▲ For inop ALS, increase S-LOC 17L Cat C/D visibility to 1 3/8 SM.

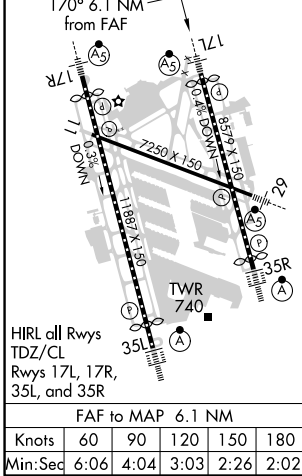
MALSR

MISSED APPROACH: Climb to 1600 then climbing left turn to 4000 direct TORAC and hold.

D-ATIS 118.725	LOUISVILLE APP CON 132.075 327.0	LOUISVILLE TOWER 124.2 257.8	GND CON 121.7 348.6	CLNC DEL 126.1 275.8	CPDLC
--------------------------	--	--	-------------------------------	--------------------------------	-------



ELEV 501	D	TDZE 499
----------	----------	----------



VGSI and ILS glidepath not coincident (VGSI Angle 3.32/TCH 71).

THUND I-PKI 16.9 RADAR	RACRR I-PKI 13.3 RADAR	SLGRR I-PKI 7.6 RADAR	KELEI I-PKI 3.9 RADAR	*I-PKI 2.7	I-PKI 1.4
5000	4000	2500	2500	*1320	
GS 3.00° TCH 55					
3.5 NM		5.8 NM		3.6 NM	
1.3 NM		1.2 NM			
CATEGORY	A	B	C	D	
S-ILS 17L	699/18		200 (200-1/2)		
S-LOC 17L	1000/24	501 (500-1/2)	1000/55	501 (500-1)	
C CIRCLING	1040-1 539 (600-1)	1140-1 639 (700-1)	1160-1 3/4 659 (700-1 3/4)	1400-3 899 (900-3)	

*LOC only.

SE-1, 25 FEB 2021 to 25 MAR 2021

SE-1, 25 FEB 2021 to 25 MAR 2021