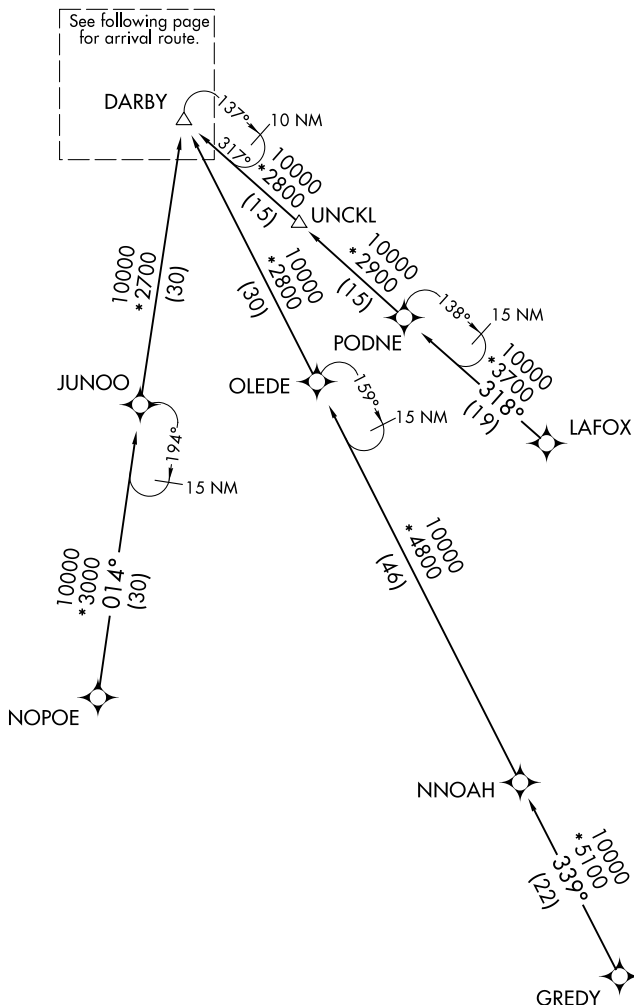


MAUDD SIX ARRIVAL (RNAV) Transition Routes

LOUISVILLE APP CON
132.075 327.0
D-ATIS
118.725

- NOTE: RADAR required.
- NOTE: RNAV 1.
- NOTE: DME/DME/IRU or GPS required.
- NOTE: Turbojet aircraft only.



NOTE: Chart not to scale.

(CONTINUED ON FOLLOWING PAGE)

SE-1, 25 FEB 2021 to 25 MAR 2021

SE-1, 25 FEB 2021 to 25 MAR 2021