

# RNAV (RNP) Z RWY 35L

LOUISVILLE MUHAMMAD ALI INTL (SDF)

APP CRS	Rwy Idg	<b>10000</b>
<b>350°</b>	TDZE	<b>464</b>
	Apt Elev	<b>501</b>

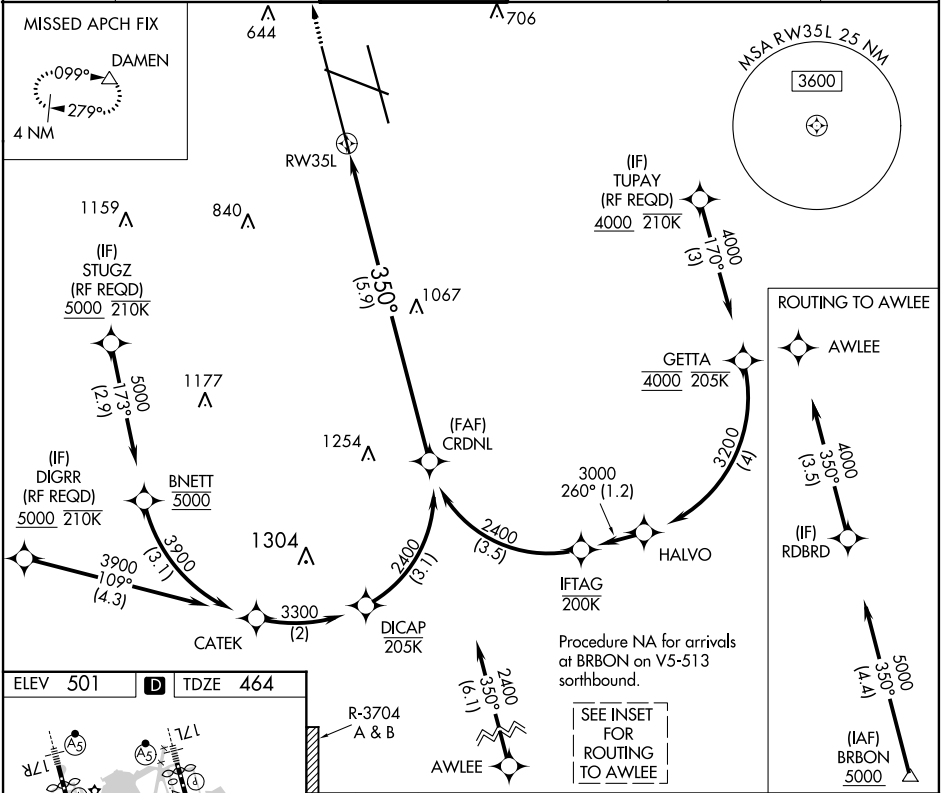
**RNP AR APCH.**

For uncompensated Baro-VNAV systems, procedure NA below -14°C or above 54°C. Simultaneous approach authorized, except for arrivals at STUGZ, DIGRR, and TUPAY.

**ALSF-2**

**MISSED APPROACH:** Climb to 1000 then climbing left turn to 3000 direct DAMEN and hold.

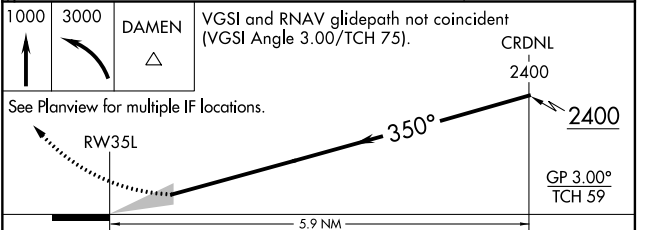
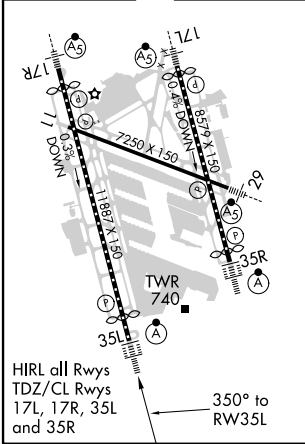
D-ATIS	LOUISVILLE APP CON	LOUISVILLE TOWER	GND CON	CLNC DEL	CPDLC
<b>118.725</b>	<b>132.075 327.0</b>	<b>124.2 257.8</b>	<b>121.7 348.6</b>	<b>126.1 275.8</b>	



SE-1, 25 FEB 2021 to 25 MAR 2021

SE-1, 25 FEB 2021 to 25 MAR 2021

ELEV 501 **D** TDZE 464



CATEGORY	A	B	C	D
RNP 0.12 DA		874/45	410 (400-7%)	
RNP 0.30 DA		914/50	450 (500-1)	

## AUTHORIZATION REQUIRED