

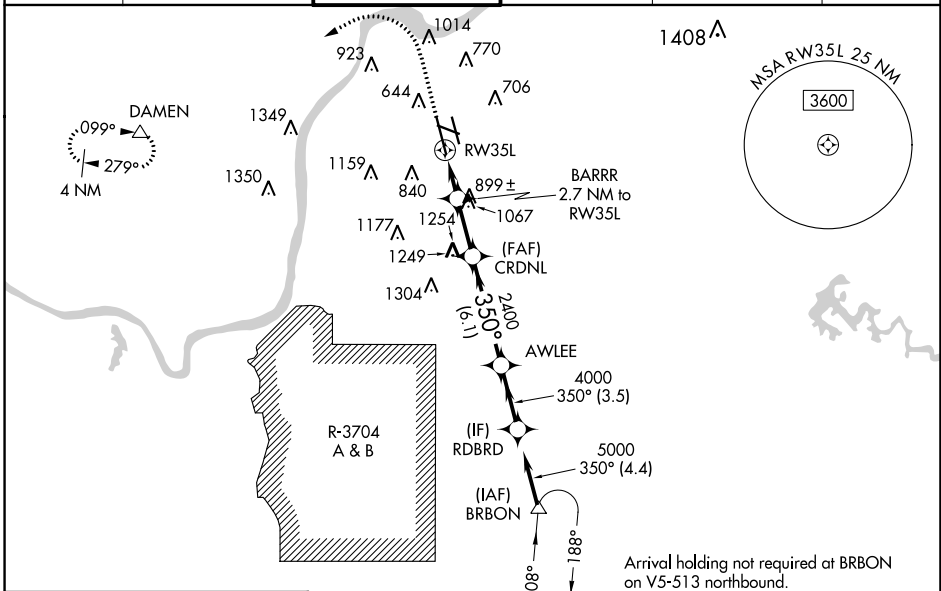
WAAS CH 86203 W35A	APP CRS 350°	Rwy Idg 10000 TDZE 464 Apt Elev 501
--	------------------------	--

RNAV (GPS) Y RWY 35L

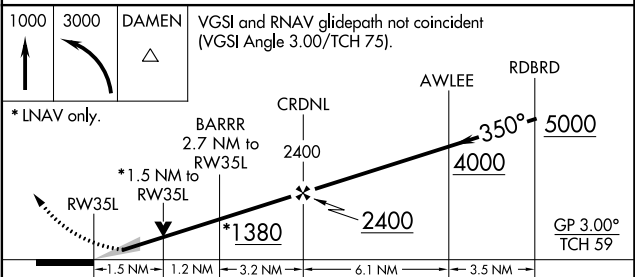
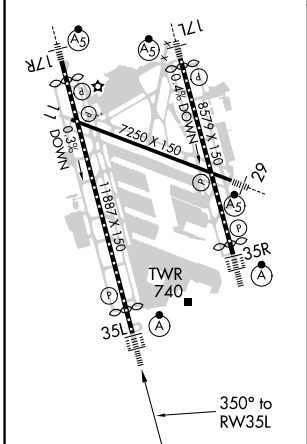
LOUISVILLE MUHAMMAD ALI INTL (SDF)

<p>RNP APCH.</p> <p>⚠ Circling Rwy 11 NA at night. Simultaneous approach authorized. LNAV procedure NA during simultaneous operations. Use of FD or AP required during simultaneous operations. For uncompensated Baro-VNAV systems, LNAV/VNAV NA below -14°C or above 54°C. For inop ALS, increase LNAV Cats C/D visibility to 1½ SM.</p>		<p>ALSF-2</p>	<p>MISSED APPROACH: Climb to 1000 then climbing left turn to 3000 direct DAMEN and hold.</p>
---	--	---------------	--

D-ATIS 118.725	LOUISVILLE APP CON 132.075 327.0	LOUISVILLE TOWER 124.2 257.8	GND CON 121.7 348.6	CLNC DEL 126.1 275.8	CPDLC
--------------------------	--	--	-------------------------------	--------------------------------	-------



ELEV 501	D	TDZE 464
HIRL all Rwys TDZ/CL Rwys 17L, 17R, 35L, and 35R		



CATEGORY	A	B	C	D
LPV DA		664/18	200 (200-½)	
LNAV/VNAV DA		904/50	440 (500-1)	
LNAV MDA	1000/24	536 (500-½)	1000/55	536 (500-1)
CIRCLING	1040-1	1140-1	1160-1½	1400-3
	539 (600-1)	639 (700-1)	659 (700-1¾)	899 (900-3)

SE-1, 25 FEB 2021 to 25 MAR 2021

SE-1, 25 FEB 2021 to 25 MAR 2021