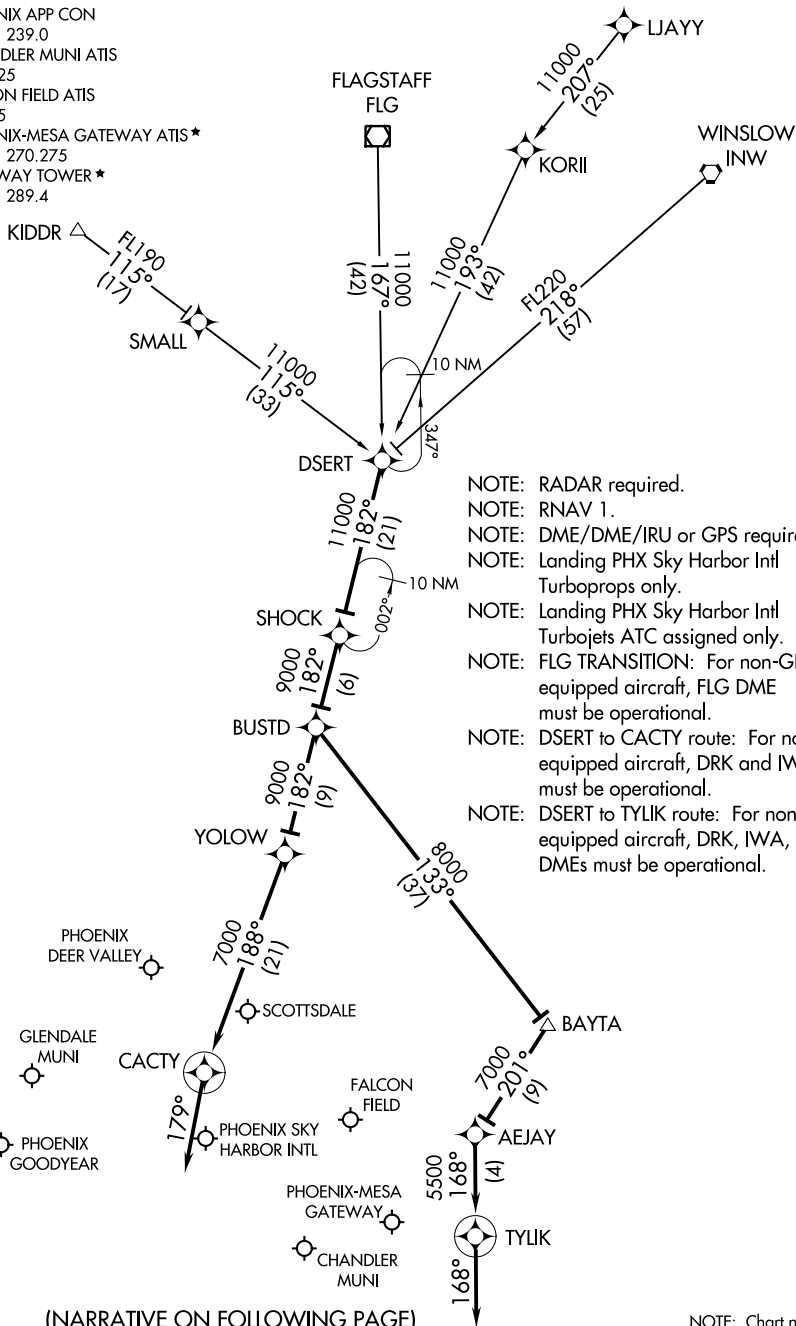


PHOENIX APP CON  
 120.7 239.0  
 CHANDLER MUNI ATIS  
 128.325  
 FALCON FIELD ATIS  
 118.35  
 PHOENIX-MESA GATEWAY ATIS \*  
 133.5 270.275  
 GATEWAY TOWER \*  
 120.6 289.4



- NOTE: RADAR required.
- NOTE: RNAV 1.
- NOTE: DME/DME/IRU or GPS required.
- NOTE: Landing PHX Sky Harbor Intl Turboprops only.
- NOTE: Landing PHX Sky Harbor Intl Turbojets ATC assigned only.
- NOTE: FLG TRANSITION: For non-GPS equipped aircraft, FLG DME must be operational.
- NOTE: DSERT to CACTY route: For non-GPS equipped aircraft, DRK and IWA DMEs must be operational.
- NOTE: DSERT to TYLIK route: For non-GPS equipped aircraft, DRK, IWA, and PXR DMEs must be operational.

(NARRATIVE ON FOLLOWING PAGE)

NOTE: Chart not to scale.

SW-4, 25 FEB 2021 to 25 MAR 2021

SW-4, 25 FEB 2021 to 25 MAR 2021