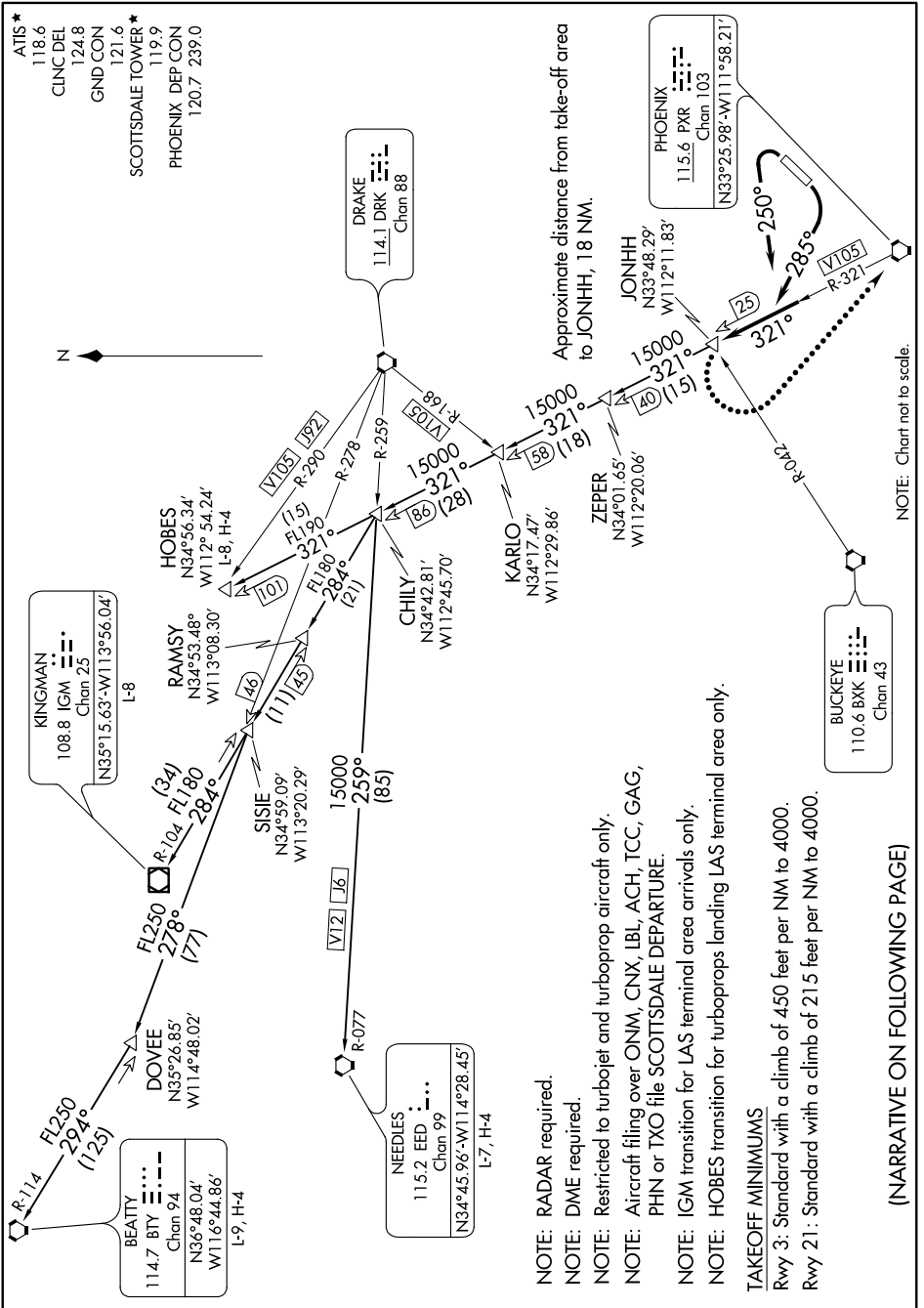


# JONHH TWO DEPARTURE

AL-5651 (FAA)

SCOTTSDALE (SDL)  
SCOTTSDALE, ARIZONA

SW-4, 25 FEB 2021 to 25 MAR 2021



- NOTE: RADAR required.
- NOTE: DME required.
- NOTE: Restricted to turbojet and turboprop aircraft only.
- NOTE: Aircraft filing over ONM, CNX, LBL, ACH, TCC, GAG, PHN or TXO file SCOTTSDALE DEPARTURE.
- NOTE: IGM transition for turboprops landing LAS terminal area only.
- NOTE: HOBES transition for turboprops landing LAS terminal area only.

### TAKEOFF MINIMUMS

- Rwy 3: Standard with a climb of 450 feet per NM to 4000.
- Rwy 21: Standard with a climb of 21.5 feet per NM to 4000.

(NARRATIVE ON FOLLOWING PAGE)

NOTE: Chart not to scale.

SW-4, 25 FEB 2021 to 25 MAR 2021