

APP CRS	Rwy Idg	N/A
109°	TDZE	N/A
	Apt Elev	1510

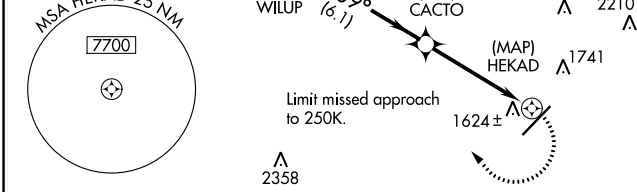
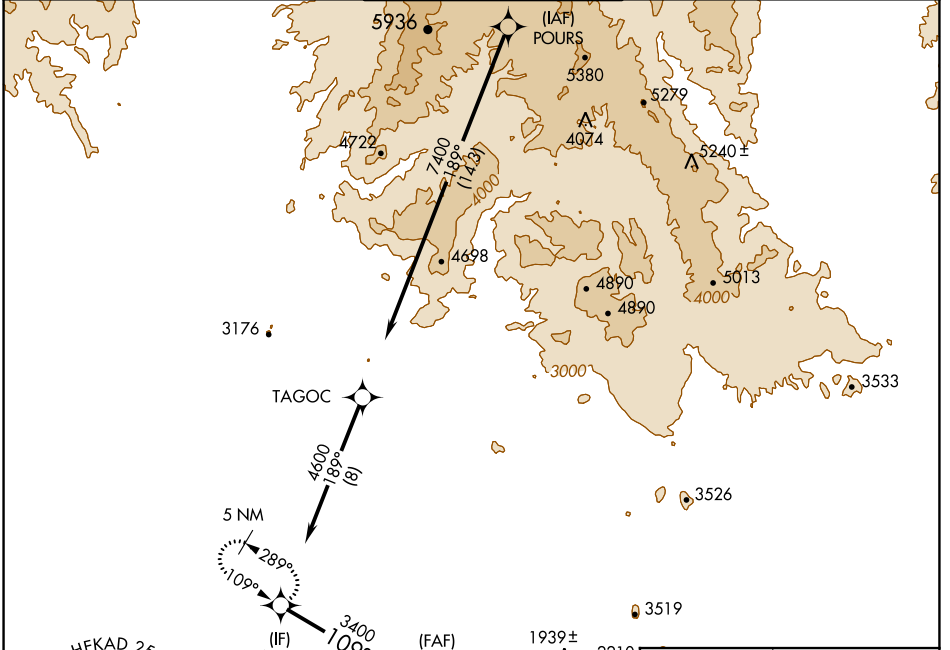
# RNAV (GPS)-D

## SCOTTSDALE (SDL)

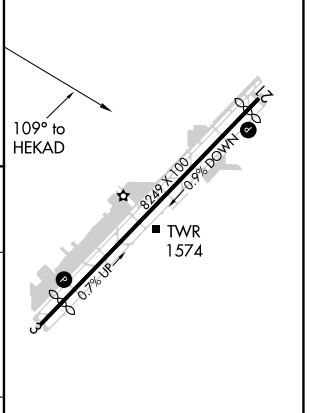
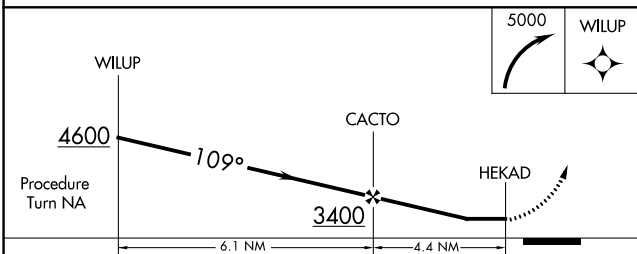
**⚠** When VGSI inoperative, circling Rwy 21 NA at night. When local altimeter setting not received, use Phoenix Sky Harbor Intl altimeter setting and increase all MDA 100 feet, increase Cat C visibility ¼ mile and Cat D visibility ½ mile. DME/DME RNP-0.3 NA.

**⚠** MISSED APPROACH: Climbing right turn to 5000 direct WILUP and hold, continue climb-in-hold to 5000.

ATIS ★	PHOENIX APP CON	SCOTTSDALE TOWER ★	GND CON	CLNC DEL
118.6	120.7 239.0	119.9 (CTAF) 0	121.6	124.8



ELEV 1510 **D**



CATEGORY	A	B	C	D
CIRCLING	2080-1	570 (600-1)	2160-2	650 (700-2)

MIRL Rwy 3-21 **0**  
REIL Rwy 3 and 21 **0**

SW-4, 25 FEB 2021 to 25 MAR 2021

SW-4, 25 FEB 2021 to 25 MAR 2021