

APP CRS 003°	Rwy Idg TDZE Apt Elev	N/A N/A 1510
------------------------	-----------------------------	---

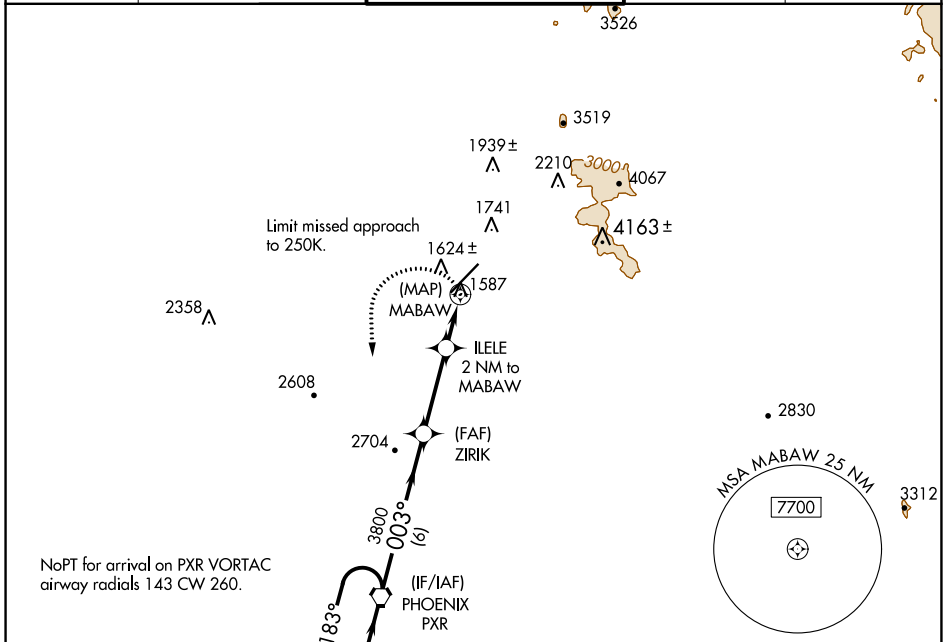
RNAV (GPS)-E

SCOTTSDALE (SDL)

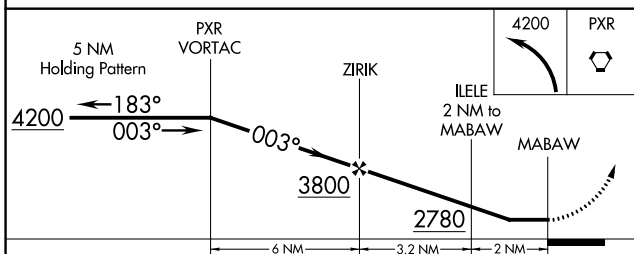
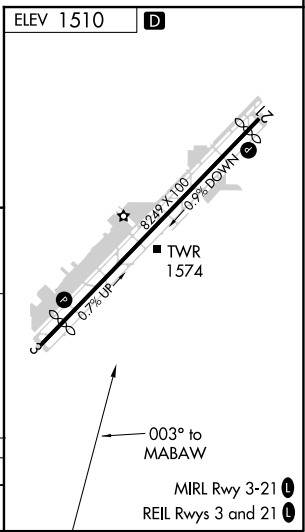
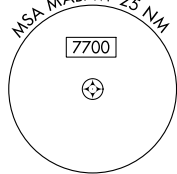
⚠ When VGSI inoperative, circling Rwy 21 NA at night. When local altimeter setting not received, use Phoenix Sky Harbor Intl altimeter setting and increase all MDA 100 feet and increase Cat B visibility ¼ mile; increase Cat C and D visibility ½ mile. DME/DME RNP-0.3 NA.

MISSED APPROACH: Climbing left turn to 4200 direct PXR VORTAC and hold.

ATIS* 118.6	PHOENIX APP CON 120.7 239.0	SCOTTSDALE TOWER* 119.9 (CTAF) 0	GND CON 121.6	CLNC DEL 124.8
-----------------------	---------------------------------------	--	-------------------------	--------------------------



NoPT for arrival on PXR VORTAC airway radials 143 CW 260.



CATEGORY	A	B	C	D
CIRCLING	2140-1	630 (700-1)	2140-2	630 (700-2)

SW-4, 25 FEB 2021 to 25 MAR 2021

SW-4, 25 FEB 2021 to 25 MAR 2021