

APP CRS	Rwy Idg	7669
212°	TDZE	1510
	Apt Elev	1510

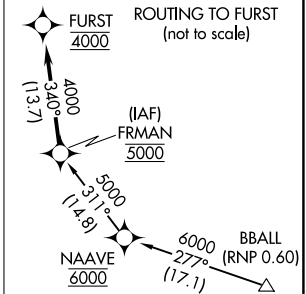
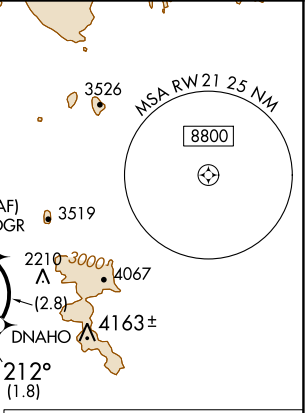
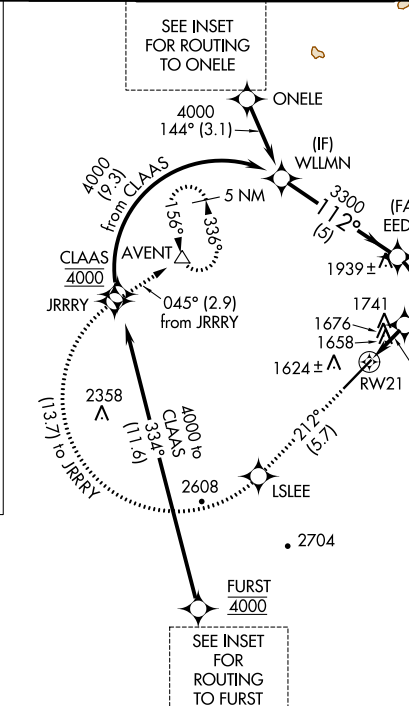
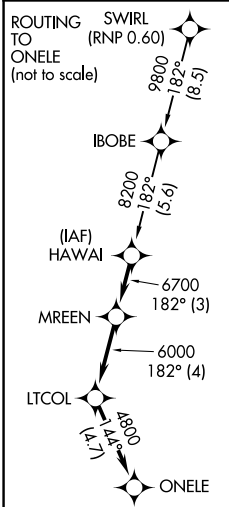
RNAV (RNP) RWY 21

SCOTTSDALE (SDL)

RF and GPS required. Visibility reduction by helicopters NA.
 For uncompensated Baro-VNAV systems, procedure NA
 below 1°C (31°F) or above 44°C (112°F).
 When local altimeter setting not received procedure NA.

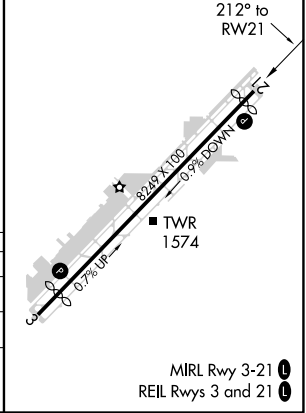
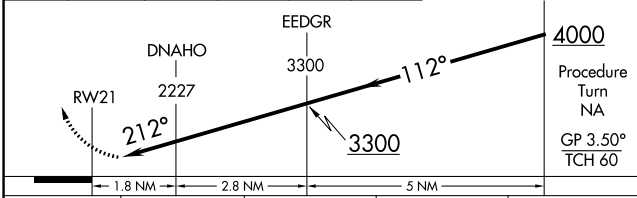
MISSED APPROACH: Climb to 5000 via track 212° to LSLEE, and via right turn to JRRRY, and via track 045° to AVENT and hold.

ATIS ★ 118.6	PHOENIX APP CON 120.7 239.0	SCOTTSDALE TOWER ★ 119.9 (CTAF) 0	GND CON 121.6	CLNC DEL 124.8
------------------------	---------------------------------------	---	-------------------------	--------------------------



5000 ↑ tr 212°	LSLEE	JRRRY	tr 045°	AVENT	VGSI and RNAV glidepath not coincident (VGSI Angle 4.00/TCH 60).
----------------------	-------	-------	---------	-------	--

ELEV 1510	D	TDZE 1510
-----------	----------	-----------



CATEGORY	A	B	C	D
RNP 0.10 DA	1948-1¼	438 (500-1¼)		NA
RNP 0.16 DA	1987-1½	477 (500-1½)		NA

AUTHORIZATION REQUIRED

MIRL Rwy 3-21
 REIL Rws 3 and 21

SW-4, 25 FEB 2021 to 25 MAR 2021

SW-4, 25 FEB 2021 to 25 MAR 2021