

(YOTES6.YOTES) 19003

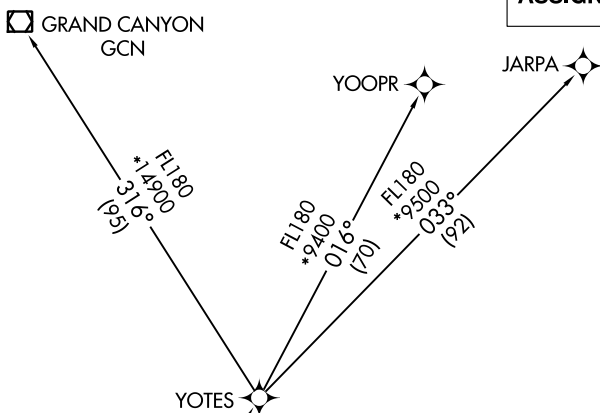
YOTES SIX DEPARTURE (RNAV)

AL-5651 (FAA)

SCOTTSDALE (SDL)
SCOTTSDALE, ARIZONA

ATIS★
118.6
CLINC DEL
124.8
GND CON
121.6
SCOTTSDALE TOWER★
119.9
PHOENIX DEP CON
120.7 239.0

**TOP ALTITUDE:
ASSIGNED BY ATC**

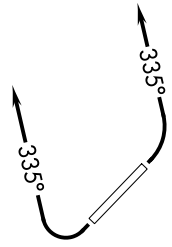


MRBIL

- NOTE: RNAV 1.
- NOTE: Turbojets and turboprops only.
- NOTE: RADAR required.
- NOTE: GPS required.
- NOTE: GCN TRANSITION ATC assigned only.
- NOTE: Aircraft departing KGEU and KGYR ATC assigned only.
- NOTE: Rwy 21: Do not exceed 210K until established on assigned heading.

TAKEOFF MINIMUMS
 Rwy 3: Standard with minimum climb of 445' per NM to 4600.
 Rwy 21: Standard with minimum climb of 300' per NM to 4600.

NOTE: Chart not to scale.



DEPARTURE ROUTE DESCRIPTION

TAKEOFF RUNWAY 3: Climbing left turn heading 335° or as assigned by ATC, thence. . . .

TAKEOFF RUNWAY 21: Climbing right turn heading 335° or as assigned by ATC. Thence. . . .

. . . .expect RADAR vectors to MRBIL, then on track 021° to YOTES, then on (transition).
 Maintain ATC assigned altitude, expect filed altitude 3 minutes after departure.

- GRAND CANYON TRANSITION (YOTES6.GCN)
- JARPA TRANSITION (YOTES6.JARPA)
- YOOPR TRANSITION (YOTES6.YOOPR)

YOTES SIX DEPARTURE (RNAV)
(YOTES6.YOTES) 24MAY18

SCOTTSDALE, ARIZONA
SCOTTSDALE (SDL)

SW-4, 25 FEB 2021 to 25 MAR 2021

SW-4, 25 FEB 2021 to 25 MAR 2021