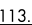


ELMAA THREE DEPARTURE

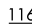
AL-582 (FAA)

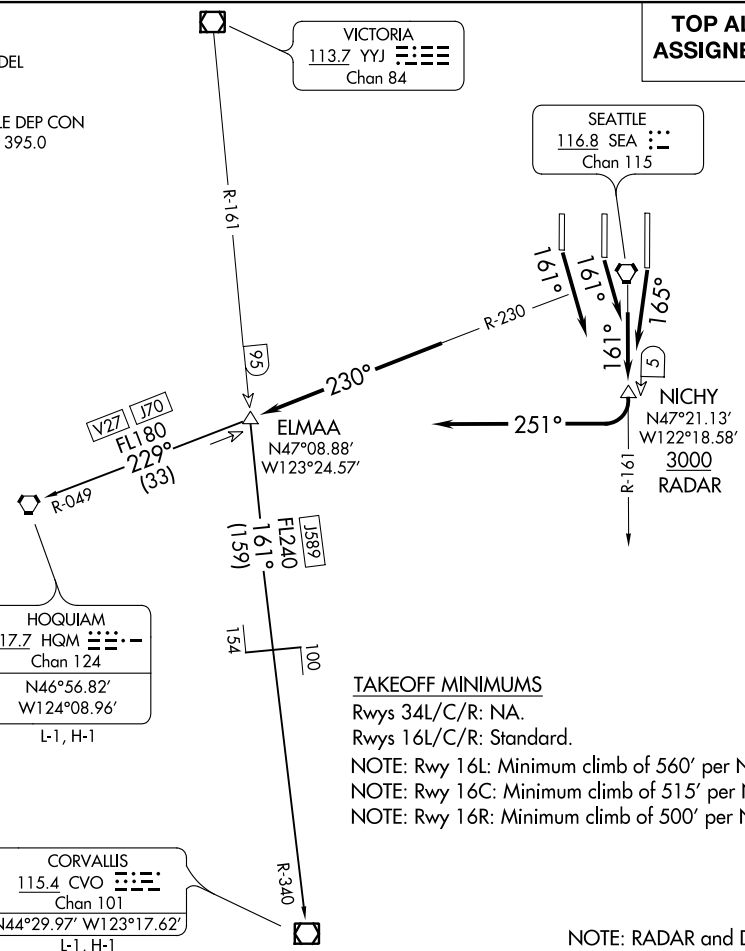
SEATTLE-TACOMA INTL (SEA)
SEATTLE, WASHINGTON

D-ATIS
118.0
CLNC DEL
128.0
CPDLC
SEATTLE DEP CON
120.4 395.0

VICTORIA
113.7 YYJ 
Chan 84

**TOP ALTITUDE:
ASSIGNED BY ATC**

SEATTLE
116.8 SEA 
Chan 115



TAKEOFF MINIMUMS

Rwys 34L/C/R: NA.
Rwys 16L/C/R: Standard.

- NOTE: Rwy 16L: Minimum climb of 560' per NM to 3000.
- NOTE: Rwy 16C: Minimum climb of 515' per NM to 3000.
- NOTE: Rwy 16R: Minimum climb of 500' per NM to 3000.

NOTE: RADAR and DME required.
NOTE: Chart not to scale.

DEPARTURE ROUTE DESCRIPTION

TAKEOFF RUNWAY 16L: Climb heading 165° and SEA R-161, thence. . .

TAKEOFF RUNWAYS 16C, 16R: Climb heading 161° and SEA R-161, thence. . .

. . . to cross NICHY/5 DME/RADAR at or above 3000, then right turn heading 251° to intercept SEA R-230 to ELMAA INT, then on (transition/assigned route), expect requested altitude/flight level 15 NM from SEA.

CORVALLIS TRANSITION (ELMAA3.CVO): From over ELMAA on YYJ R-161 and CVO R-340 to CVO VOR/DME.

HOQUIAM TRANSITION (ELMAA3.HQM): From over ELMAA on HQM R-049 to HQM VORTAC.

NW-1, 25 FEB 2021 to 25 MAR 2021

NW-1, 25 FEB 2021 to 25 MAR 2021

ELMAA THREE DEPARTURE