

HAWKZ SEVEN ARRIVAL (RNAV) Arrival Routes

SEATTLE-TACOMA INTL (SEA)
SEATTLE, WASHINGTON

ARRIVAL ROUTE DESCRIPTION

From HAWKZ on track 023° to LIINE.

LANDING RUNWAYS 16L/C/R: From LIINE on track 022° to cross PIKEZ between 12000 and 15000 and at 250K, then on track 001° to COFAY, then on track 351° to cross BREVE between 10000 and 11000 and at 250K, then on track 350° to cross NETTZ at or above 8000 and at 230K, then on track 344° to cross KWEST at or above 7000, then on track 344° to cross VASHN at 6000 and at 210K, then on track 344°. Expect RADAR vectors to RNAV (RNP)/ILS/VISUAL approach as assigned by ATC.

LANDING RUNWAYS 34L/C/R: From LIINE on track 027° to cross FOOTT between 10000 and 12000 and at 250K, then on track 030° to cross GOALZ at or above 8000, then on track 014° to cross SONDR at 6000 and at 230K. Expect RNAV (RNP)/ILS/VISUAL approach as assigned by ATC.

LOST COMMUNICATIONS

LANDING RUNWAY 16: At VASHN, proceed to GRIFY and execute the ILS RWY 16R approach.

LANDING RUNWAY 34: At SONDR, execute the ILS RWY 34L approach.

NOTE: RADAR required.

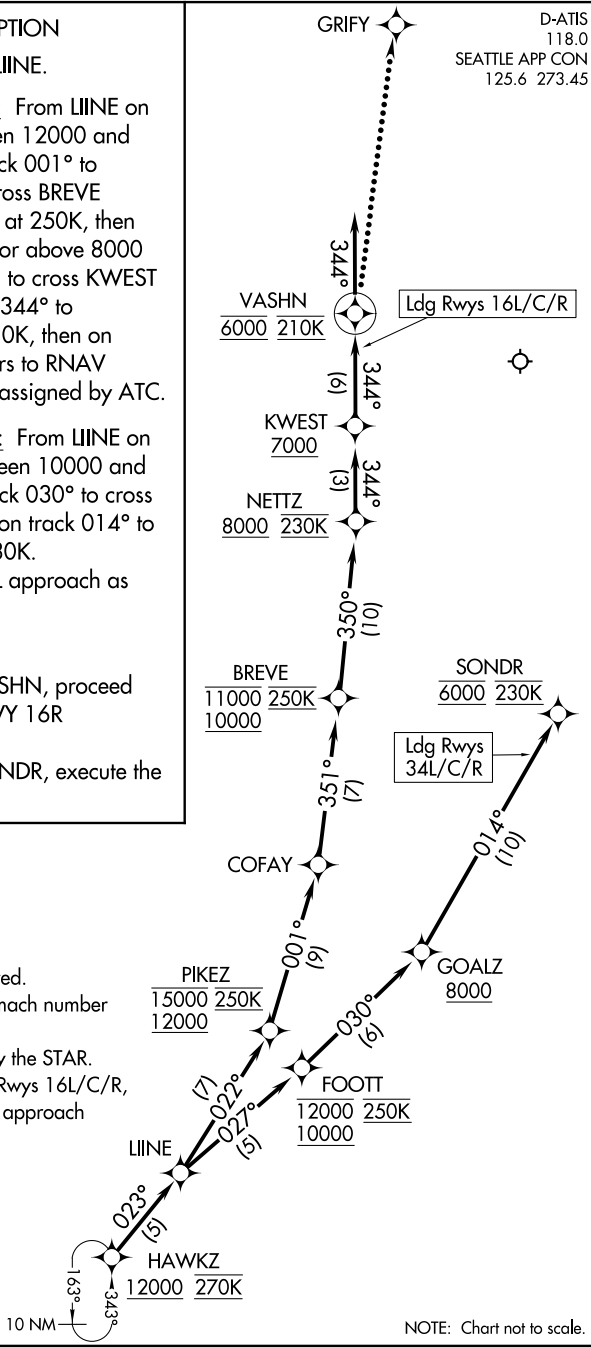
NOTE: RNAV 1.

NOTE: DME/DME/IRU or GPS required.

NOTE: Turbojet aircraft descend via mach number until intercepting 280K.

Maintain 280K until slowed by the STAR.

NOTE: For non-RNP aircraft landing Rwy 16L/C/R, expect RADAR vectors to final approach course prior to VASHN.



D-ATIS
118.0
SEATTLE APP CON
125.6 273.45

NW-1, 25 FEB 2021 to 25 MAR 2021

NW-1, 25 FEB 2021 to 25 MAR 2021

NOTE: Chart not to scale.

HAWKZ SEVEN ARRIVAL (RNAV) Arrival Routes

SEATTLE, WASHINGTON
SEATTLE-TACOMA INTL (SEA)