

LOC/DME I-SZI 111.7 Chan 54	APP CRS 164°	Rwy Idg TDZE Apt Elev	9426 430 432
---	------------------------	-----------------------------	---

ILS RWY 16C (SA CAT I)

SEATTLE-TACOMA INTL (SEA)

DME or RADAR required. From GRIFY:RNAV 1-GPS required.

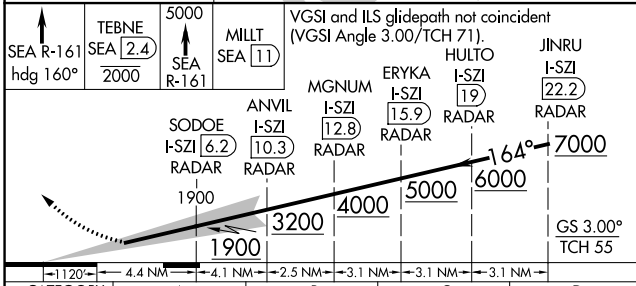
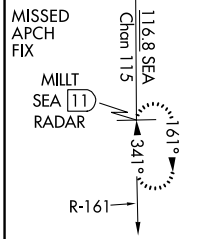
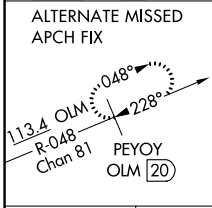
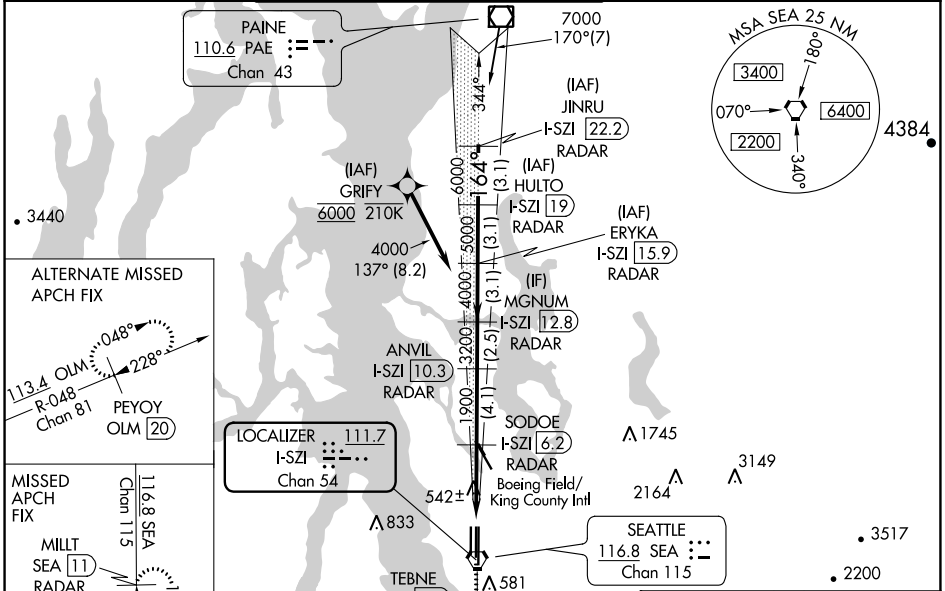
Simultaneous approach authorized with Rwy 16R. Simultaneous operations require use of vertical guidance, maintain last assigned altitude until established on glideslope. Requires specific OPSPEC, MSPEC or LOA approval and use of HUD to DH.

ALSF-2

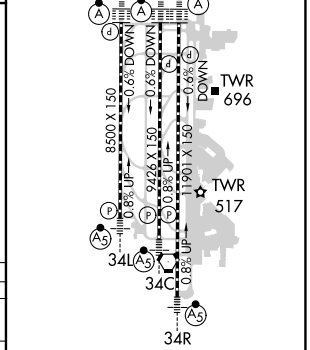


MISSED APPROACH: Climb on heading 160° and SEA VORTAC R-161 to cross TEBNE/SEA 2.4 DME/RADAR at or below 2000, then climb to 5000 on SEA VORTAC R-161 to MILLT/SEA 11 DME/RADAR and hold, continue climb-in-hold to 5000.

D-ATIS 118.0	SEATTLE APP CON 133.65 273.45	SEATTLE TOWER 119.9 239.3 (Rwys 16L, 16C, 34C, 34R) 120.95 239.3 (Rwys 16R, 34L)	GND CON 121.7	CLNC DEL 128.0	CPDLC
------------------------	---	--	-------------------------	--------------------------	-------



ELEV 432	TDZE 432
----------	----------



CATEGORY	A	B	C	D
S-ILS 16C	RA 292/14 150 DA 580			

SA CATEGORY I ILS - SPECIAL AIRCREW & AIRCRAFT CERTIFICATION REQUIRED

HIRL all Rwys
TDZ/CL Rwys 16L, 16C, 16R and 34R

NW-1, 25 FEB 2021 to 25 MAR 2021

NW-1, 25 FEB 2021 to 25 MAR 2021