

LOC/DME I-SNQ 110.3 Chan 40	APP CRS 164°	Rwy Idg TDZE 432 Apt Elev 432	11901
------------------------------------------	------------------------	---------------------------------------------------	--------------

ILS RWY 16L (SA CAT I)

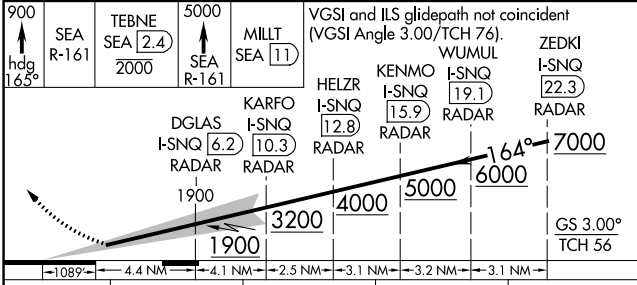
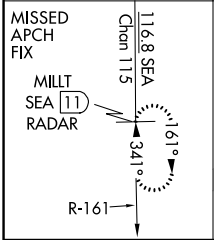
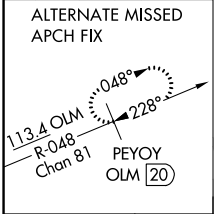
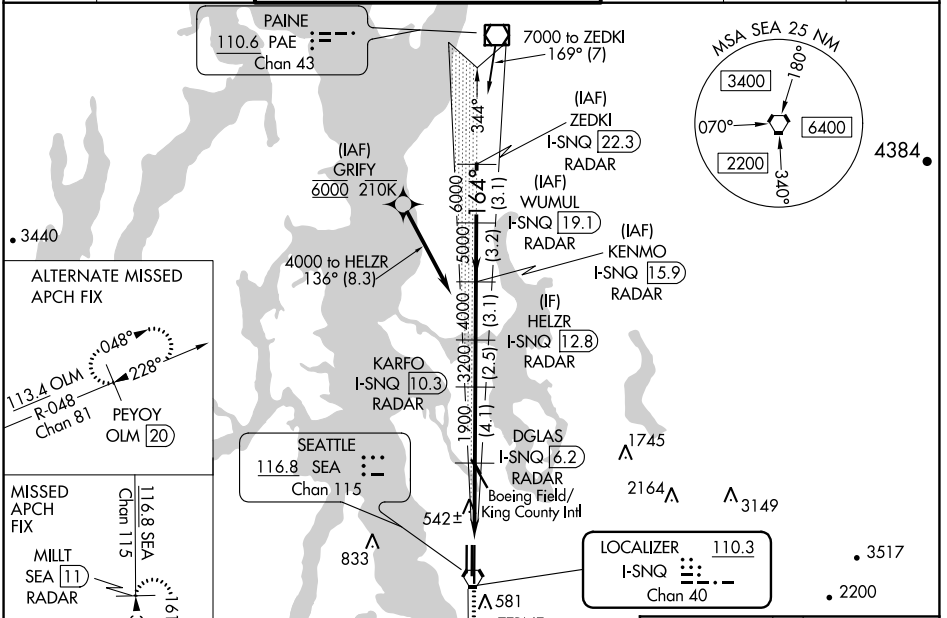
SEATTLE-TACOMA INTL (SEA)

DME or RADAR required. From GRIFY:RNAV 1-GPS required.

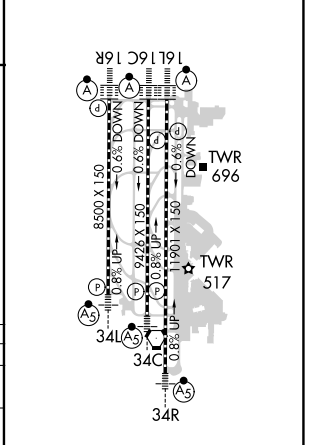
Simultaneous approach authorized with Rwy 16R.
Requires specific OPSPEC, MSPEC, or LOA approval and use of HUD to DH.

ALSIF-2
MISSED APPROACH: Climb to 900 on heading 165° then on SEA VORTAC R-161 to cross TEBNE/SEA 2.4 DME/RADAR at or below 2000 then climb to 5000 on SEA VORTAC R-161 to MILLT/SEA 11 DME/RADAR and hold, continue climb-in-hold to 5000.

D-ATIS 118.0	SEATTLE APP CON 133.65 273.45	SEATTLE TOWER 119.9 239.3 (Rwys 16L, 16C, 34C, 34R) 120.95 239.3 (Rwys 16R, 34L)	GND CON 121.7	CLNC DEL 128.0	CPDLC
------------------------	-----------------------------------------	------------------------------------------------------------------------------------------------------	-------------------------	--------------------------	-------



ELEV 432	D TDZE 432
----------	-------------------



CATEGORY	A	B	C	D
S-ILS 16L	RA 248/14 150 DA 582			

SA CATEGORY I ILS - SPECIAL AIRCREW & AIRCRAFT CERTIFICATION REQUIRED

HIRL all Rwys TDZ/CL Rwys 16L, 16C, 16R and 34R

NW-1, 25 FEB 2021 to 25 MAR 2021

NW-1, 25 FEB 2021 to 25 MAR 2021