


| | | | |
|---|------------------------|-----------------------------|--|
| LOC/DME I-SEA 110.3 Chan 40 | APP CRS 344° | Rwy Idg TDZE Apt Elev | 11901 372 432 |
|---|------------------------|-----------------------------|--|

ILS RWY 34R (SA CAT I & II)

SEATTLE-TACOMA INTL (SEA)

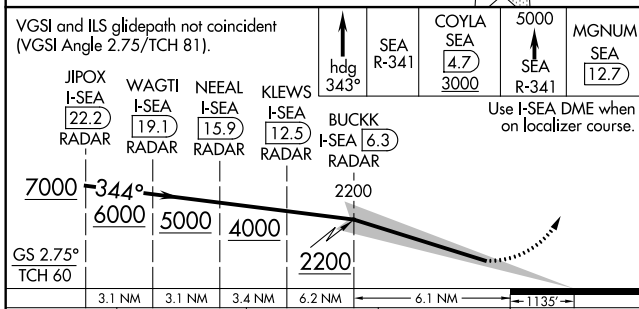
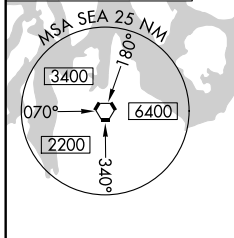
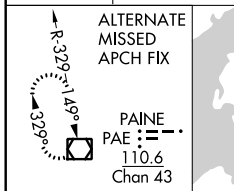
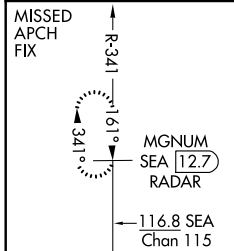
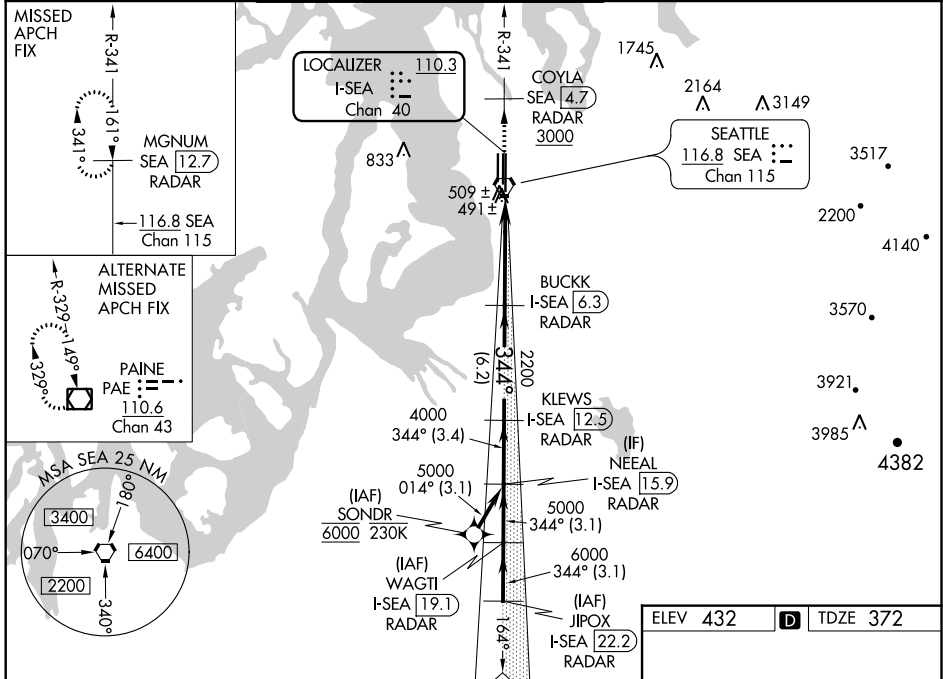
From SONDR: RNAV 1-GPS required. DME or RADAR required.

⚠ Simultaneous approach authorized with Rwy 34L. SA CAT I: Requires specific OPSPEC, MSPEC, or LOA approval and use of HUD to DH. SA CAT II: Reduced lighting: Requires specific OPSPEC, MSPEC, or LOA approval and use of autoland or HUD to touchdown.

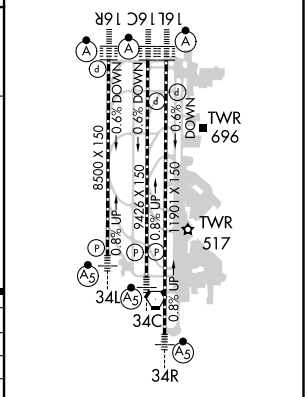
MALSR 

MISSED APPROACH: Climb on heading 343° and outbound on SEA VORTAC R-341 to cross COYLA/SEA 4.7 DME/RADAR at or above 3000 then climb to 5000 on SEA VORTAC R-341 to MGNUM/SEA 12.7 DME/RADAR and hold, continue climb-in-hold to 5000.

| | | | | | |
|------------------------|---|---|-------------------------|--------------------------|-------|
| D-ATIS 118.0 | SEATTLE APP CON 133.65 273.45 | SEATTLE TOWER. 119.9 239.3 (Rwys 16L, 16C, 34C, 34R) 120.95 239.3 (Rwys 16R, 34L) | GND CON 121.7 | CLNC DEL 128.0 | CPDLC |
|------------------------|---|---|-------------------------|--------------------------|-------|



| | |
|----------|-------------------|
| ELEV 432 | D TDZE 372 |
|----------|-------------------|



| | | | | |
|-----------|-----------|-----------|-----|--------|
| CATEGORY | A | B | C | D |
| S-ILS 34R | SA CAT I | RA 250/14 | 150 | DA 522 |
| S-ILS 34R | SA CAT II | RA 200/12 | 100 | DA 472 |

SA CATEGORY I & II ILS - SPECIAL AIRCREW & AIRCRAFT CERTIFICATION REQUIRED

HIRL all Rwys
TDZ/CL Rwys 16L, 16C, 16R and 34R

NW-1, 25 FEB 2021 to 25 MAR 2021

NW-1, 25 FEB 2021 to 25 MAR 2021