

LOC/DME I-SNQ 110.3 Chan 40	APP CRS 164°	Rwy Idg 11901 TDZE 432 Apt Elev 432
--	------------------------	--

ILS or LOC RWY 16L

SEATTLE-TACOMA INTL (SEA)

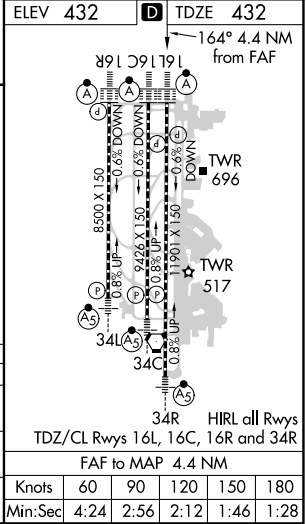
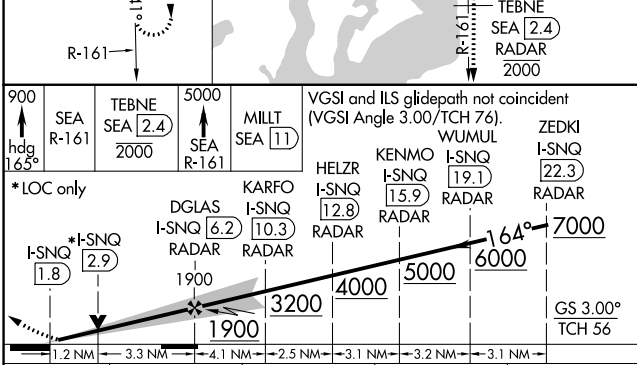
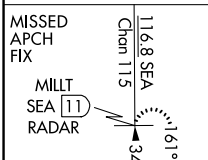
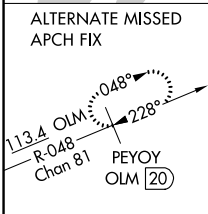
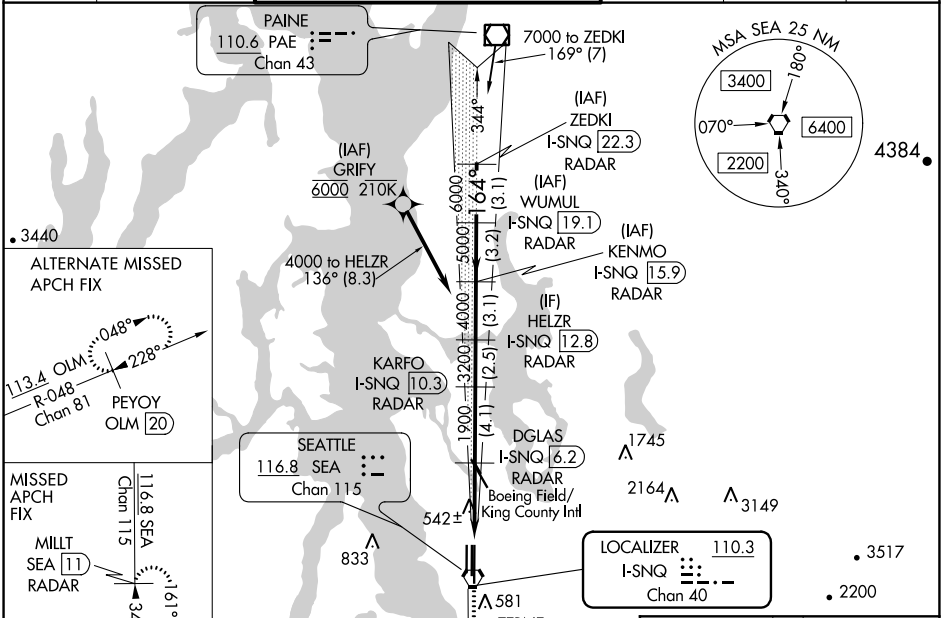
DME or RADAR required. From GRIFY:RNAV 1-GPS required.

Simultaneous approach authorized with Rwy 16R.

ALSIF-2

MISSED APPROACH: Climb to 900 on heading 165° then on SEA VORTAC R-161 to cross TEBNE/SEA 2.4 DME/RADAR at or below 2000 then climb to 5000 on SEA VORTAC R-161 to MILLT/SEA 11 DME/RADAR and hold, continue climb-in-hold to 5000.

D-ATIS 118.0	SEATTLE APP CON 133.65 273.45	SEATTLE TOWER 119.9 239.3 (Rwys 16L, 16C, 34C, 34R) 120.95 239.3 (Rwys 16R, 34L)	GND CON 121.7	CLNC DEL 128.0	CPDLC
------------------------	---	--	-------------------------	--------------------------	-------



900	TEBNE SEA 2.4	5000	VGSI and ILS glidepath not coincident (VGSI Angle 3.00/TCH 76)				
hgd 165°	SEA R-161	SEA R-161	WUMUL I-SNQ 19.1	ZEDKI I-SNQ 22.3			
*LOC only							
I-SNQ 1.8	DGLAS I-SNQ 6.2	KARFO I-SNQ 10.3	HELZR I-SNQ 12.8	KENMO I-SNQ 15.9			
1.2 NM 3.3 NM 4.1 NM 2.5 NM 3.1 NM 3.2 NM 3.1 NM							
CATEGORY	A	B	C	D			
S-ILS 16L	697/20 265 (300-1/2)	632/18 200 (200-1/2)					
S-LOC 16L	880/24	448 (500-1/2)	880/45	448 (500-7/8)			
CIRCLING	1000-1 568 (600-1)		1000-1 1/2 568 (600-1 1/2)	1000-2 568 (600-2)			

NW-1, 25 FEB 2021 to 25 MAR 2021

NW-1, 25 FEB 2021 to 25 MAR 2021