

MOUNTAIN ONE DEPARTURE

AL-582 (FAA)

SEATTLE-TACOMA INTL (SEA)
SEATTLE, WASHINGTON

D-ATIS
118.0
CLNC DEL
128.0
CPDLC
SEATTLE DEP CON
119.2 284.7

VANCOUVER
115.9 YVR
Chan 106
N49°04.64'
W123°08.94'
L-1, H-1

PRINCETON
113.9 YDC
Chan 86
N49°22.89'
W120°22.42'
H-1

**TOP ALTITUDE:
ASSIGNED BY ATC**

CRANBROOK
112.1 YXC
Chan 58
N49°33.30'
W116°05.26'
H-1

PAINE
110.6 PAE
Chan 43
N47°55.19'
W122°16.67'
L-1, H-1

NEZUG
N47°34.13'
W122°18.12'
4000

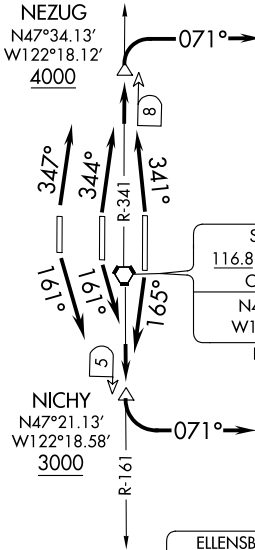
SPOKANE
115.5 GEG
Chan 102
N47°33.90'
W117°37.61'
L-13, H-1

EPHRATA
112.6 EPH
Chan 73
N47°22.68'
W119°25.44'
L-13, H-1

SEATTLE
116.8 SEA
Chan 115
N47°26.12'
W122°18.58'
L-1, H-1

MULLAN PASS
117.8 MLP
Chan 125
N47°27.41'
W115°38.76'
L-13, H-1

NW-1, 25 FEB 2021 to 25 MAR 2021



MOSES LAKE
115.0 MWH
Chan 97
N47°12.65'
W119°19.01'
L-13, H-1

ELLENSBURG
117.9 ELN
Chan 126
N47°01.46'
W120°27.50'
L-13, H-1

YAKIMA
116.0 YKM
Chan 107
N46°34.21'
W120°26.68'
L-13, H-1

PASCO
109.8 PSC
Chan 35
N46°16.22'
W119°07.04'
L-13

NW-1, 25 FEB 2021 to 25 MAR 2021

TAKEOFF MINIMUMS

- Rwy 16L: Standard with minimum climb of 560' per NM to 3000.
- Rwy 16C: Standard with minimum climb of 515' per NM to 3000.
- Rwy 16R: Standard with minimum climb of 500' per NM to 3000.
- Rwys 34L/C/R: Standard with minimum climb of 580' per NM to 4000.

NOTE: RADAR and DME required.

(NARRATIVE ON FOLLOWING PAGE)

NOTE: Chart not to scale.

MOUNTAIN ONE DEPARTURE