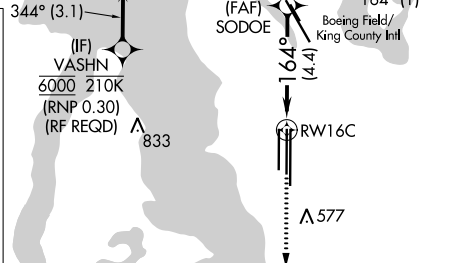
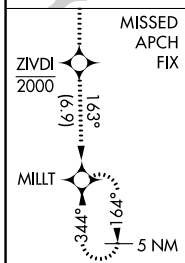
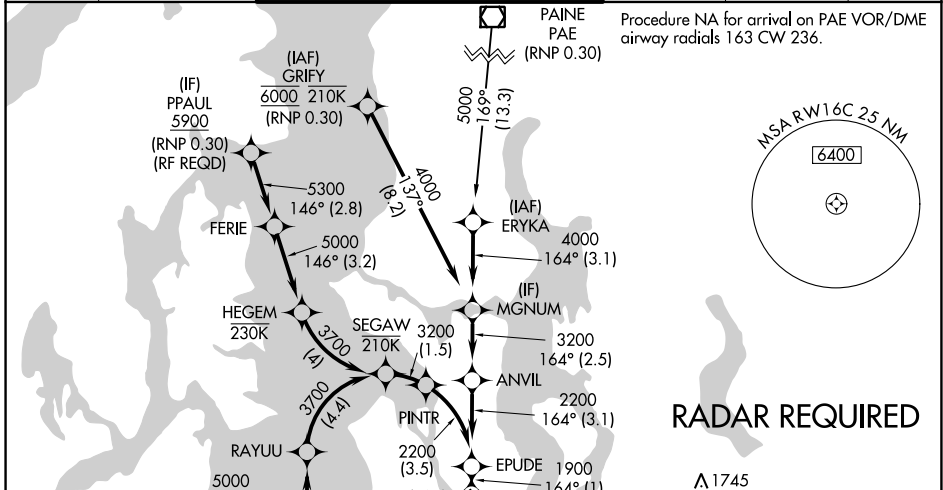


APP CRS	Rwy Idg	9426
164°	TDZE	430
	Apt Elev	433

RNAV (RNP) Z RWY 16C

SEATTLE-TACOMA INTL (SEA)

<p>▽ For uncompensated Baro-VNAV systems, procedure NA below -6°C (22°F) or above 54°C (130°F). GPS required. See additional requirements on adjacent information page. For inop ALS, increase RNP 0.12 all Cats visibility to RVR 5200, and increase RNP 0.30 all Cats visibility to 1 3/8 SM.</p>	<p>ALSF-2</p>	<p>MISSED APPROACH: Climb direct ZIVDI to cross ZIVDI at or below 2000, then climb to 5000 on track 163° to MILLT and hold, continue climb-in-hold to 5000.</p>	
	<p>D-ATIS 118.0</p>	<p>SEATTLE APP CON 133.65 273.45</p>	<p>SEATTLE TOWER 119.9 239.3 (Rwys 16L, 16C, 34C, 34R) 120.95 239.3 (Rwys 16R, 34L)</p>
	<p>GND CON 121.7</p>	<p>CLNC DEL 128.0</p>	<p>CPDLC</p>

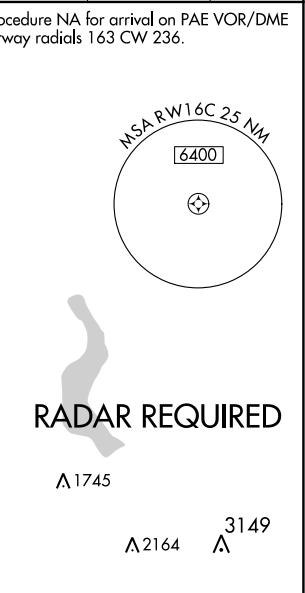


<p>ZIVDI</p> <p>2000</p>	<p>5000</p> <p>tr 163°</p>	<p>MILLT</p>	<p>VGSI and RNAV glidepath not coincident (VGSI Angle 3.00/TCH 71).</p>
--------------------------	----------------------------	--------------	---

See Planview for multiple IF locations.

CATEGORY	A	B	C	D
RNP 0.12 DA		758/29	328 (400-5%)	
RNP 0.30 DA		834/43	404 (500-7%)	

AUTHORIZATION REQUIRED



ELEV	433	D	TDZE	430
<p>164° to RWY16C</p>				
<p>89L 09L 19L</p>				
<p>8500 X 150</p>				
<p>8150 X 150</p>				
<p>7910 X 150</p>				
<p>7690 X 150</p>				
<p>7470 X 150</p>				
<p>7250 X 150</p>				
<p>7030 X 150</p>				
<p>6810 X 150</p>				
<p>6590 X 150</p>				
<p>6370 X 150</p>				
<p>6150 X 150</p>				
<p>5930 X 150</p>				
<p>5710 X 150</p>				
<p>5490 X 150</p>				
<p>5270 X 150</p>				
<p>5050 X 150</p>				
<p>4830 X 150</p>				
<p>4610 X 150</p>				
<p>4390 X 150</p>				
<p>4170 X 150</p>				
<p>3950 X 150</p>				
<p>3730 X 150</p>				
<p>3510 X 150</p>				
<p>3290 X 150</p>				
<p>3070 X 150</p>				
<p>2850 X 150</p>				
<p>2630 X 150</p>				
<p>2410 X 150</p>				
<p>2190 X 150</p>				
<p>1970 X 150</p>				
<p>1750 X 150</p>				
<p>1530 X 150</p>				
<p>1310 X 150</p>				
<p>1090 X 150</p>				
<p>870 X 150</p>				
<p>650 X 150</p>				
<p>430 X 150</p>				
<p>210 X 150</p>				
<p>0 X 150</p>				
<p>34L (AS)</p>				
<p>34C (AS)</p>				
<p>34R</p>				
<p>TWR 696</p>				
<p>TWR 517</p>				
<p>HIRL all Rwys</p>				
<p>TDZ/CL Rwys 16L, 16C, 16R and 34R</p>				

NW-1, 25 FEB 2021 to 25 MAR 2021

NW-1, 25 FEB 2021 to 25 MAR 2021