

RNAV (RNP) Z RWY 34R


SEATTLE-TACOMA INTL (SEA)

APP CRS	Rwy Idg	11901
344°	TDZE	372
	Apt Elev	432

RNP AR APCH.

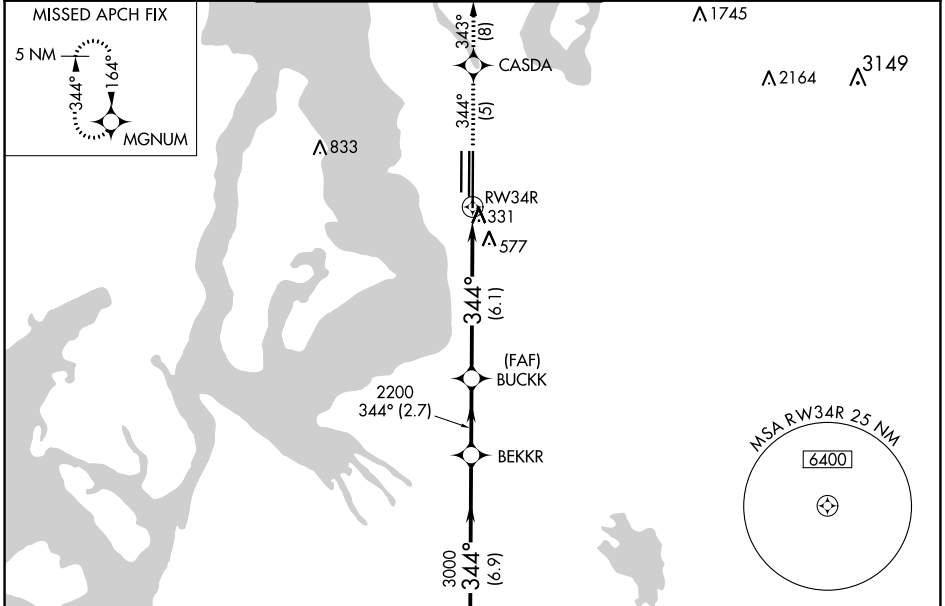
Simultaneous approach authorized. For uncompensated Baro-VNAV systems, procedure NA below -6°C or above 54°C. Use of FD or AP required during simultaneous operations. For inop ALS, increase RNP 0.28 all Cats visibility to 1 3/8 SM. Inop table does not apply to RNP 0.30.

MALSR

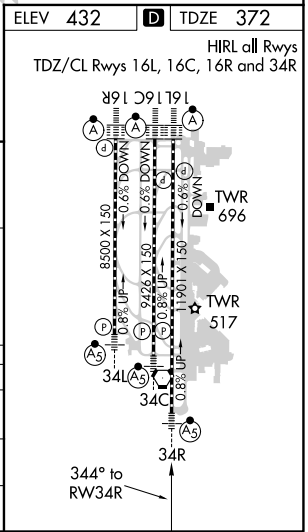
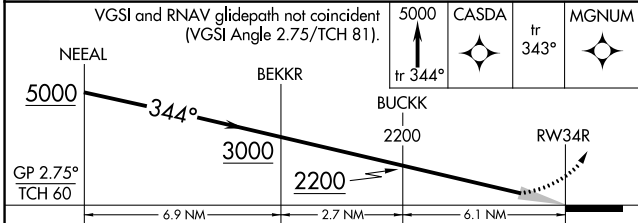


MISSED APPROACH: Climb to 5000 on track 344° to CASDA and on track 343° to MGNUM and hold, continue climb-in-hold to 5000.

D-ATIS	SEATTLE APP CON	SEATTLE TOWER	GND CON	CLNC DEL	CPDLC
118.0	133.65 273.45	119.9 239.3 (Rwys 16L, 16C, 34C, 34R) 120.95 239.3 (Rwys 16R, 34L)	121.7	128.0	



ELEV	432	TDZE	372
HIRL all Rwys TDZ/CL Rwys 16L, 16C, 16R and 34R			



CATEGORY	A	B	C	D
RNP 0.28 DA		867/50	495 (500-1)	
RNP 0.30 DA		880-1 1/2	508 (500-1 1/2)	

AUTHORIZATION REQUIRED

NW-1, 25 FEB 2021 to 25 MAR 2021

NW-1, 25 FEB 2021 to 25 MAR 2021