

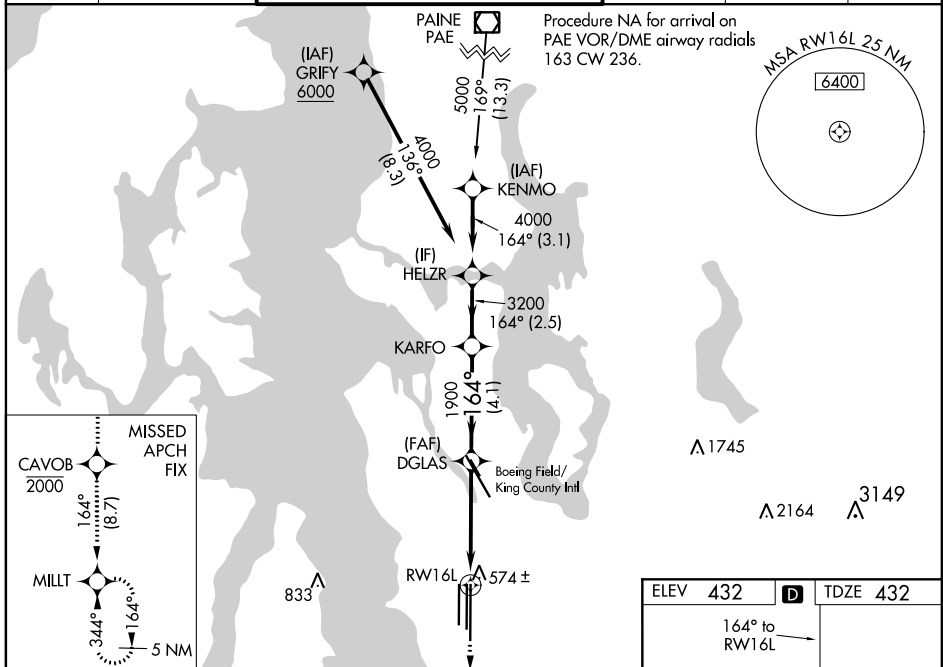
WAAS CH 63202 W16A	APP CRS 164°	Rwy Idg 11901 TDZE 432 Apt Elev 432
--	------------------------	--

RNAV (GPS) Y RWY 16L

SEATTLE-TACOMA INTL (SEA)

RNP APCH.	ALSF-2 	MISSED APPROACH: Climb direct CAVOB to cross CAVOB at or below 2000 then climb to 5000 on track 164° to MILLT and hold, continue climb-in-hold to 5000.
-----------	------------	---

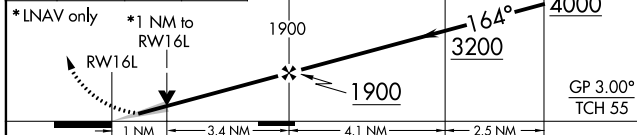
D-ATIS 118.0	SEATTLE APP CON 133.65 273.45	SEATTLE TOWER 119.9 239.3 (Rwys 16L, 16C, 34C, 34R) 120.95 239.3 (Rwys 16R, 34L)	GND CON 121.7	CLNC DEL 128.0	CPDLC
------------------------	---	--	-------------------------	--------------------------	-------



NW-1, 25 FEB 2021 to 25 MAR 2021

NW-1, 25 FEB 2021 to 25 MAR 2021

CAVOB 2000	5000	MILLT	VGSI and RNAV glidepath not coincident (VGSI Angle 3.00/TCH 76).
------------	------	-------	--



CATEGORY	A	B	C	D
LPV DA		700/24	268 (300-½)	
RNAV/VNAV DA		766/32	334 (400-⅝)	
RNAV MDA	840/24	408 (500-½)	840/40	408 (500-¾)
CIRCLING	1000-1	568 (600-1)	1000-1½ 568 (600-1½)	1000-2 568 (600-2)

