

WAAS CH 69435 W15A	APP CRS 149°	Rwy Idg TDZE 166 Apt Elev 166	8014
--	------------------------	---	-------------

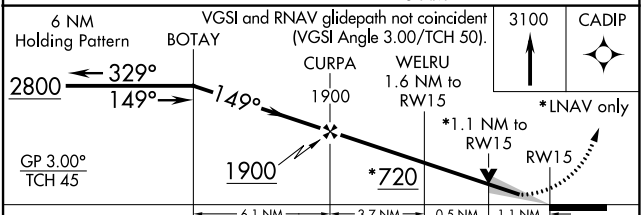
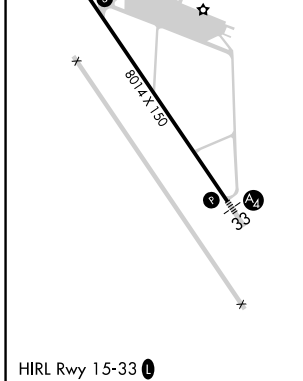
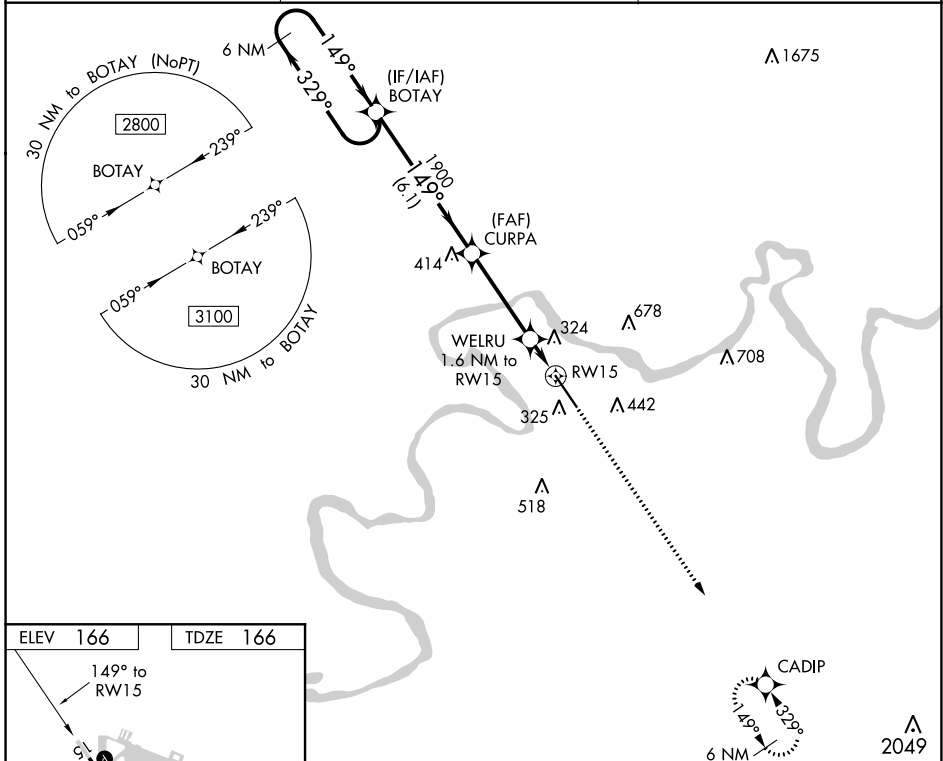
RNAV (GPS) RWY 15

CRAIG FIELD (SEM)

⚠ Baro-VNAV NA when using Montgomery altimeter setting. For uncompensated Baro-VNAV systems, LNAV/VNAV NA below -15°C (5°F) or above 54°C (130°F). DME/DME RNP-0.3 NA. VDP NA with Montgomery altimeter setting. When local altimeter setting not received, use Montgomery altimeter setting and increase all DA 78 feet, all MDA 80 feet, LPV all Cats visibility 3/8 mile, LNAV/VNAV all Cats visibility and LNAV Cats C and D visibility 1/4 mile, Circling Cat C visibility 1/2 mile and Cat D visibility 1/4 mile.

MISSED APPROACH: Climb to 3100 direct CADIP and hold.

AWOS-3PT 119.15	MONTGOMERY APP CON * 124.0 363.025	UNICOM 122.7 (CTAF) 0
---------------------------	--	---------------------------------



CATEGORY	A	B	C	D
LPV DA		416-3/4	250 (300-3/4)	
LNAV/VNAV DA		569-1 3/8	403 (500-1 1/8)	
LNAV MDA	560-1	394 (400-1)	560-1 1/8	394 (400-1 1/8)
C CIRCLING	660-1 494 (500-1)	760-1 594 (600-1)	760-1 1/2 594 (600-1 1/2)	1040-2 3/4 874 (900-2 3/4)

SE-4, 25 FEB 2021 to 25 MAR 2021

SE-4, 25 FEB 2021 to 25 MAR 2021