

WAAS CH <b>99403</b> <b>W32A</b>	APP CRS <b>316°</b>	Rwy Idg TDZE Apt Elev	<b>5502</b> <b>574</b> <b>583</b>
--	------------------------	-----------------------------	---

# RNAV (GPS) RWY 32

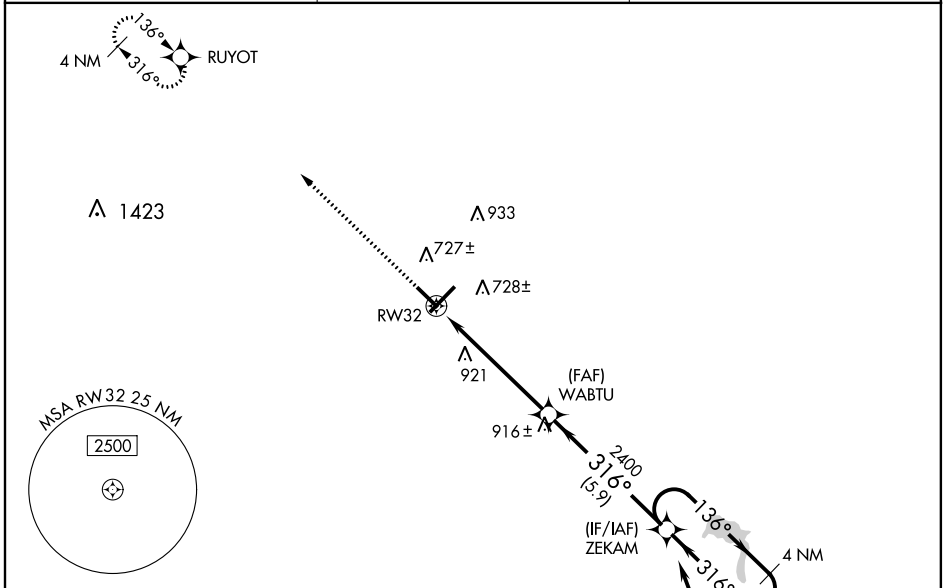
FREEMAN MUNI (SE.R)

RNP APCH

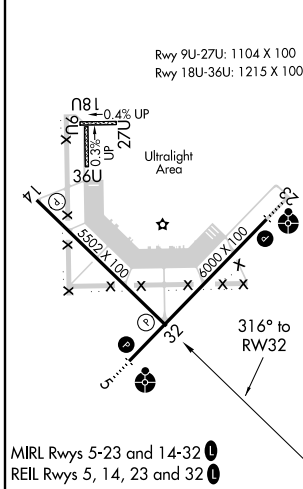
Baro-VNAV NA when using Louisville Muhammad Ali Intl altimeter setting. When local altimeter setting not received, use Louisville Muhammad Ali Intl altimeter setting and increase all DA 117 feet and all MDA 120 feet; increase LPV all Cats, LNAV/VNAV all Cats and LNAV Cat C/D visibility  $\frac{3}{8}$  mile and Circling Cat C/D visibility  $\frac{1}{2}$  mile. VDP NA with Louisville Muhammad Ali Intl altimeter setting. For uncompensated Baro-VNAV systems, LNAV/VNAV NA below  $-16^{\circ}\text{C}$  or above  $54^{\circ}\text{C}$ . Rwy 32 helicopter visibility reduction below  $\frac{3}{4}$  SM NA.

MISSED APPROACH:  
Climb to 2600 direct RUYOT and hold.

AWOS-3 <b>119.425</b>	INDIANAPOLIS CENTER <b>124.775 269.45</b>	UNICOM <b>122.8 (CTAF) 0</b>
--------------------------	--	---------------------------------



ELEV 583	TDZE 574
----------	----------



2600	RUYOT	VGSI and RNAV glidepath not coincident (VGSI Angle 3.00/TCH 38).		4 NM
		WABTU	ZEKAM	Holding Pattern
*LNAV only.		2400	316°	3500
	+1.6 NM to RW32	2400	316°	GP 3.00° TCH 40
	1.6	4.1 NM	5.9 NM	
CATEGORY	A	B	C	D
LPV DA		859-1	285 (300-1)	
LNAV/VNAV DA		853-1	279 (300-1)	
LNAV MDA	1140-1	566 (600-1)	1140-1 $\frac{5}{8}$	566 (600-1 $\frac{5}{8}$ )
CIRCLING	1140-1	557 (600-1)	1300-2 717 (800-2)	1300-2 $\frac{1}{4}$ 717 (800-2 $\frac{1}{4}$ )

EC-2, 25 FEB 2021 to 25 MAR 2021

EC-2, 25 FEB 2021 to 25 MAR 2021