

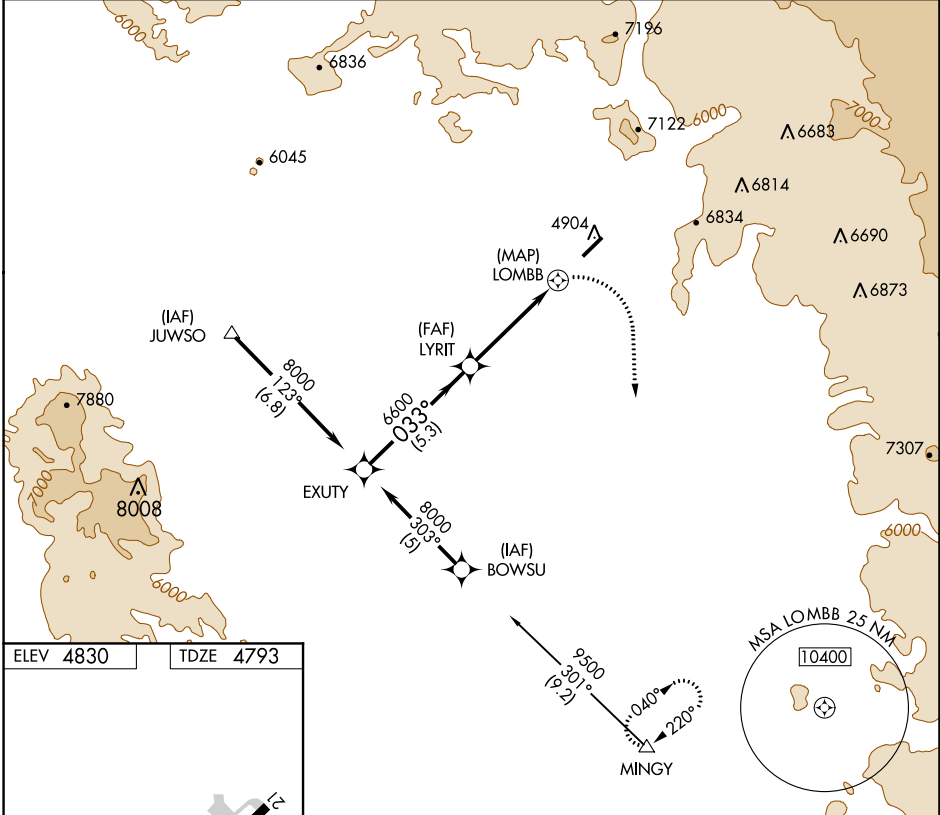
GPS RWY 3 SEDONA (SE/Z)

| | | |
|-------------|----------|-------------|
| APP CRS | Rwy Idg | 5132 |
| 033° | TDZE | 4793 |
| | Apt Elev | 4830 |

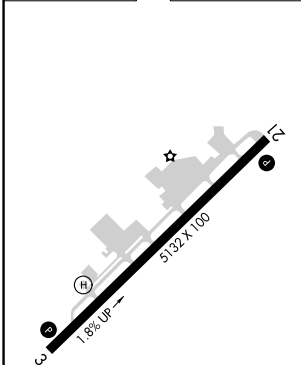
⚠ When local altimeter not received, procedure not authorized.
⚠ NA Cat D circling not authorized northwest of Rwy 3-21.
 Circling Rwy 21 NA at night.

MISSED APPROACH: Climbing right turn to 12000 direct MINGY WP and hold.

| | | |
|----------------------------|---|--|
| AWOS-3PT 118.525 | PHOENIX APP CON 126.375 236.775 | UNICOM 123.0 (CTAF) 📻 |
|----------------------------|---|--|

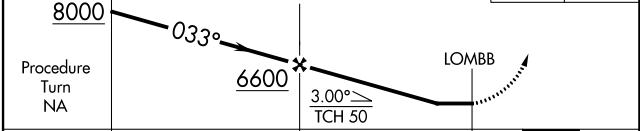


| | |
|-----------|-----------|
| ELEV 4830 | TDZE 4793 |
|-----------|-----------|



MIRL Rwy 3-21 **📻**
 REIL Rwy 3 and 21 **📻**

EXUTY VGS1 and descent angles not coincident (VGS1 Angle 3.00/TCH 44). 12000 MINGY **△**



| CATEGORY | A | B | C | D |
|-------------------|---------------------------|---------------------------|--------|---------------|
| S-3 | 6140-1½ 1347 (1400-1½) | 6240-1½ 1447 (1500-1½) | 6560-3 | 1767 (1800-3) |
| C CIRCLING | 6140-1½ 1310 (1400-1½) | 6240-1½ 1410 (1500-1½) | NA | |

SW-4, 25 FEB 2021 to 25 MAR 2021

SW-4, 25 FEB 2021 to 25 MAR 2021