


LOC/DME I-FNU <b>110.15</b> Chan <b>38</b> (Y)	APP CRS <b>275°</b>	Rwy ldg <b>11002</b> TDZE <b>45</b> Apt Elev <b>55</b>
--	------------------------	--

# ILS or LOC RWY 27R

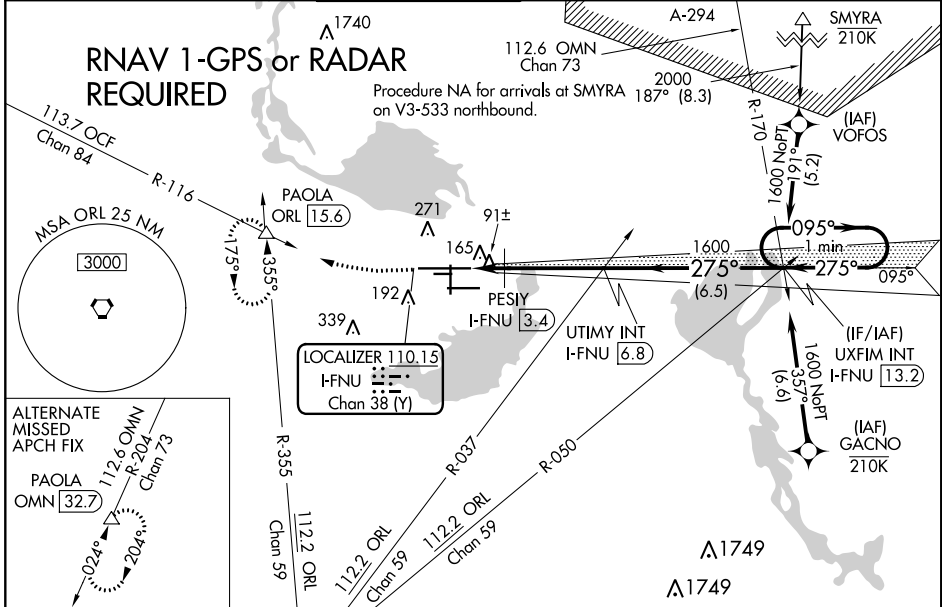
ORLANDO SANFORD INTL (SF'B)

**▼** For inop ALS, increase PESIY FIX minimums  
**▲** Cat C/D visibility to 1 SM.

MALSR 

MISSED APPROACH: Climb to 500 then climbing right turn to 2800 on heading 280° and ORL VORTAC R-355 to PAOLA INT/ORL 15.6 DME and hold, continue climb-in-hold to 2800.

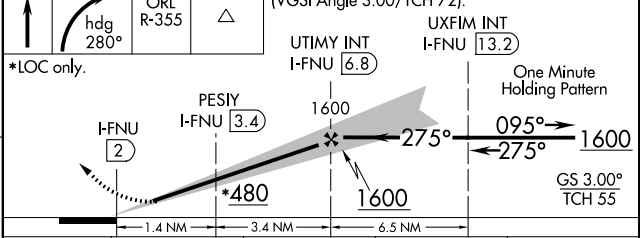
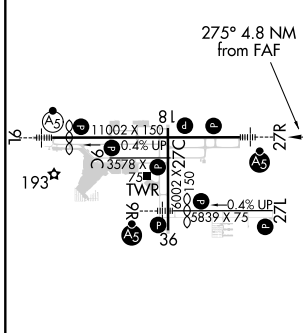
ATIS <b>125.975</b>	ORLANDO APP CON <b>135.3 351.9</b> (NORTH) <b>119.775 351.9</b> (SOUTH)	SANFORD TOWER* <b>120.3</b> (CTAF) <b>0 254.35</b>	GND CON <b>121.35 254.35</b>	CLNC DEL <b>123.975</b>	CLNC DEL <b>121.35</b> (when twr closed)
------------------------	---	---	---------------------------------	----------------------------	--



SE-3, 25 FEB 2021 to 25 MAR 2021

SE-3, 25 FEB 2021 to 25 MAR 2021

ELEV 55	<b>D</b> TDZE 45	500	2800	PAOLA ORL R-355	VGSI and ILS glidepath not coincident (VGSI Angle 3.00/TCH 72).
---------	------------------	-----	------	-----------------	---



MIRL Rwy 9C-27C and 18-36 HIRL Rwy 9L-27R and 9R-27L REIL Rwy 9C, 18, 27L and 36	FAF to MAP 4.8 NM				
	Knots	60	90	120	150
Min:Sec	4:48	3:12	2:24	1:55	1:36

CATEGORY	A	B	C	D
S-ILS 27R	245-1/2 200 (200-1/2)			
S-LOC 27R	480-1/2	435 (500-1/2)	480-3/4	435 (500-3/4)
CIRCLING	580-1	525 (600-1)	600-1 1/2 545 (600-1 1/2)	640-2 585 (600-2)
PESIY FIX MINIMUMS				
S-LOC 27R	400-1/2	355 (400-1/2)	400-5/8	355 (400-5/8)
CIRCLING	580-1	525 (600-1)	600-1 1/2 545 (600-1 1/2)	640-2 585 (600-2)