

LOC/DME I-OOS 111.55 Chan 52 (Y)	APP CRS 095°	Rwy ldg 5000 TDZE 39 Apt Elev 55
--	------------------------	---

ILS or LOC RWY 9R

ORLANDO SANFORD INTL (SF'B)

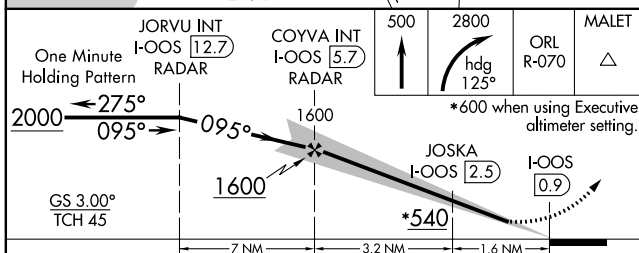
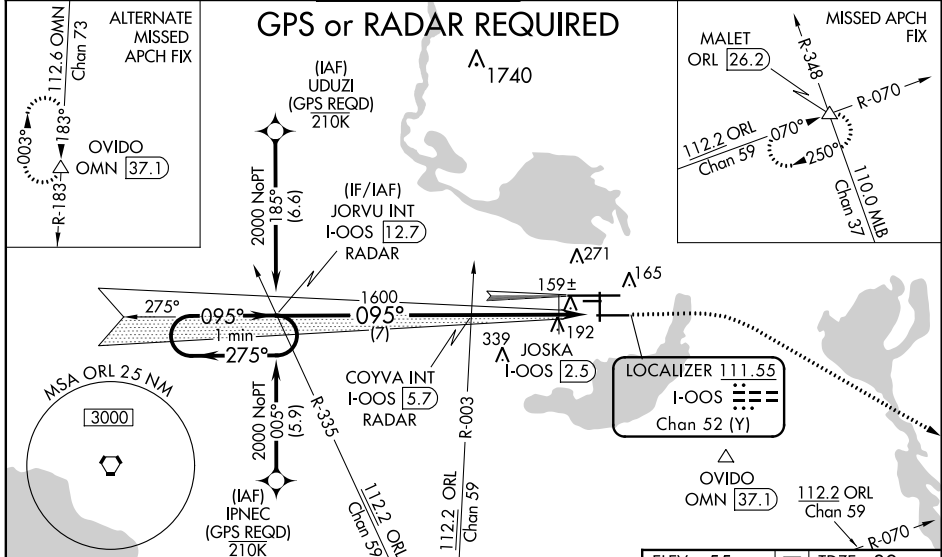
▽ When local altimeter setting not received, use Executive altimeter setting and increase S-ILS DA to 282, and all MDA 60 feet; increase S-LOC 9R Cat C, D visibility ¼ mile, Circling Cat C visibility ½ mile and JOSKA fix minimums S-LOC 9R Cats C, D visibility ¼ mile. Simultaneous approach authorized with Rwy 9L. Night landing: Rwy 27C NA.

MALSR



MISSED APPROACH: Climb to 500 then climbing right turn to 2800 on heading 125° and ORL VORTAC R-070 to MALET INT/ORL 26.2 DME and hold.

ATIS 125.975	ORLANDO APP CON 135.3 351.9 (NORTH) 119.775 351.9 (SOUTH)	SANFORD TOWER* 120.3 (CTAF) 0 254.35	GND CON 121.35 254.35	CLNC DEL 123.975	CLNC DEL 121.35 (when twr closed)
------------------------	---	--	---------------------------------	----------------------------	--



ELEV 55	D	TDZE 39
JORVU INT I-OOS 12.7	COYVA INT I-OOS 5.7	JOSKA I-OOS 2.5
ORL R-070	MALET	
*600 when using Executive altimeter setting.		
MIRL Rwy 9C-27C and 18-36		
HIRL Rwy 9L-27R and 9R-27L		
REIL Rwy 9C, 18, 27L and 36		
FAF to MAP 4.8 NM		
Knots	60	90 120 150 180
Min:Sec	4:48	3:12 2:24 1:55 1:36

CATEGORY	A	B	C	D
S-ILS 9R		239-½	200 (200-½)	
S-LOC 9R	540-½	501 (500-½)	540-1	501 (500-1)
C CIRCLING	580-1	525 (600-1)	600-1½ 545 (600-1½)	640-2 585 (600-2)
JOSKA FIX MINIMUMS (DME REQUIRED)				
S-LOC 9R	440-½	401 (400-½)	440-¾	401 (400-¾)
C CIRCLING	580-1	525 (600-1)	600-1½ 545 (600-1½)	640-2 585 (600-2)

SE-3, 25 FEB 2021 to 25 MAR 2021

SE-3, 25 FEB 2021 to 25 MAR 2021