

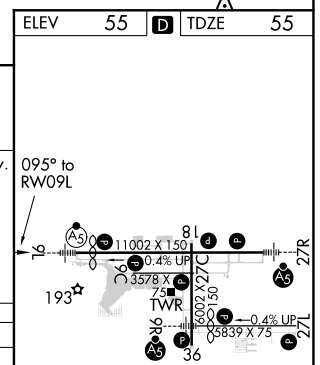
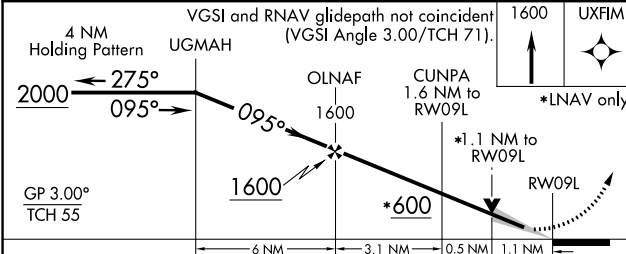
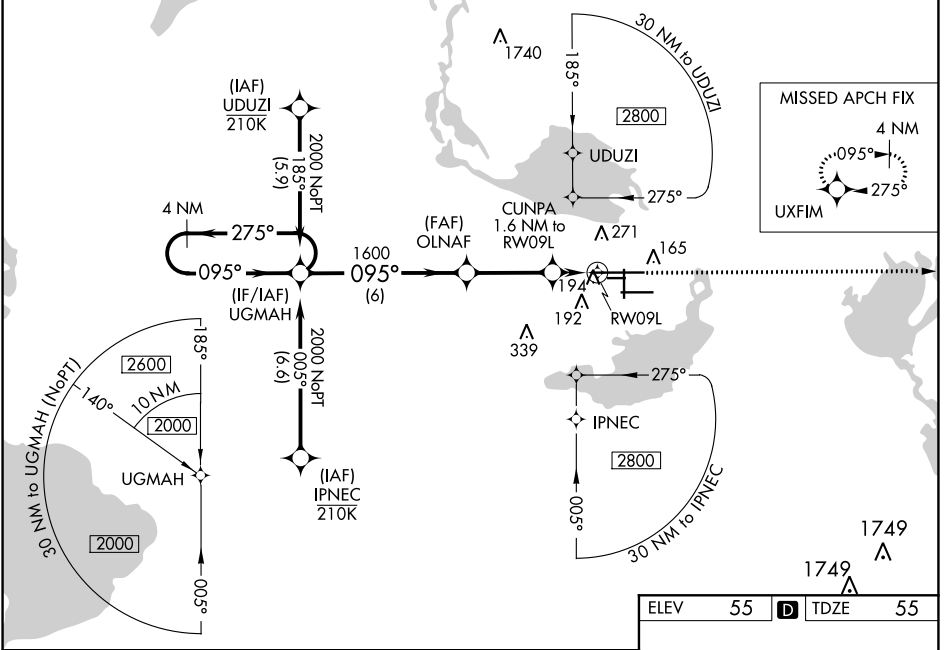
WAAS CH 78409 W09A	APP CRS 095°	Rwy ldg 1000Z TDZE 55 Apt Elev 55
--	------------------------	--

RNAV (GPS) RWY 9L

ORLANDO SANFORD INTL (SF'B)

RNP APCH.	MALSR 	MISSED APPROACH: Climb to 1600 direct UXFIM and hold.
<p>⚠ For uncompensated Baro-VNAV systems, LNAV/VNAV NA below 0°C or above 54°C. Baro-VNAV and VDP NA when using Executive altimeter setting. When local altimeter setting not received, use Executive altimeter setting and increase LPV DA to 282, LNAV/VNAV DA to 501 and all MDA 60 feet; increase LNAV/VNAV all Cnts visibilities 1/4 SM and LNAV Cat C/D visibility 1/4 SM. Night landing: Rwy 27C NA.</p>		

ATIS 125.975	ORLANDO APP CON 135.3 351.9 (NORTH) 119.775 351.9 (SOUTH)	SANFORD TOWER ★ 120.3 (CTAF) 0 254.35	GND CON 121.35 254.35	CLNC DEL 123.975	CLNC DEL 121.35 (when twr closed)
------------------------	---	--	---------------------------------	----------------------------	--



CATEGORY	A	B	C	D
LPV DA		255-1/2	200 (200-1/2)	
LNAV/VNAV DA		355-1/2	300 (300-1/2)	
LNAV MDA	460-1/2 405 (500-1/2)		460-3/4 405 (500-3/4)	
C CIRCLING	580-1 525 (600-1)		600-1 1/2 545 (600-1 1/2)	640-2 585 (600-2)

MIRL Rwy 9C-27C and 18-36 **ⓘ**
 HIRL Rwy 9L-27R and 9R-27L **ⓘ**
 REIL Rws 9C, 18, 27L and 36

SE-3, 25 FEB 2021 to 25 MAR 2021

SE-3, 25 FEB 2021 to 25 MAR 2021