

# SAN FRANCISCO FOUR DEPARTURE

AL-375 (FAA)

SAN FRANCISCO INTL (SFO)  
SAN FRANCISCO, CALIFORNIA

**TOP ALTITUDE:  
ASSIGNED BY ATC**

RED BLUFF  
115.7 RBL   
Chan 104  
N40°05.93'-W122°14.18'  
L-2, H-3

D-ATIS  
113.7 115.8 118.85  
CPDLC  
GND CON  
121.8  
SAN FRANCISCO TOWER  
120.5 269.1  
NORCAL DEP CON  
120.9 323.2

### TAKEOFF MINIMUMS

Rwys 1L/R: Standard.

Rwys 28L/R: Standard with a minimum climb of 351' per NM to 1300.

NOTE: RADAR required.

NOTE: Rwys 1L/R: DME required.

SACRAMENTO  
115.2 SAC   
Chan 99  
N38°26.62'-W121°33.10'  
L-2-3, H-3

SAUSALITO  
116.2 SAU   
Chan 109  
N37°51.32'-W122°31.37'  
L-2-3, H-3

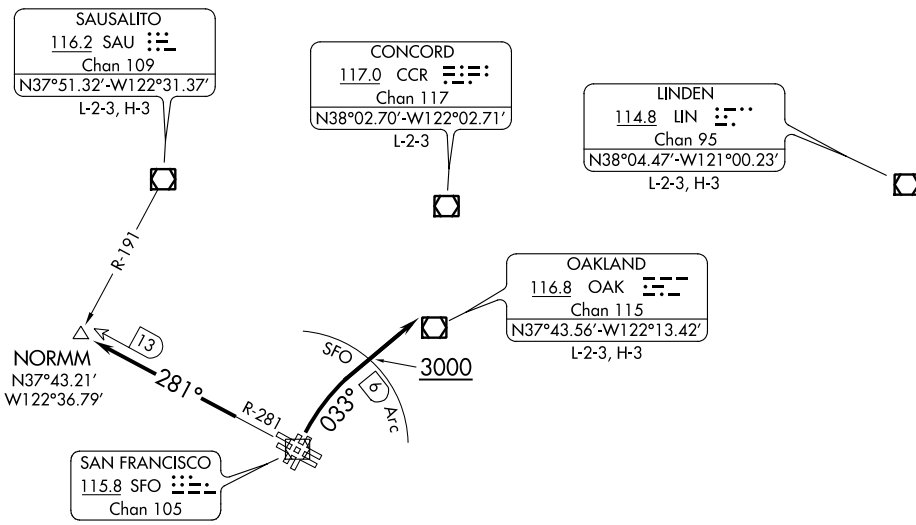
CONCORD  
117.0 CCR   
Chan 117  
N38°02.70'-W122°02.71'  
L-2-3

LINDEN  
114.8 LIN   
Chan 95  
N38°04.47'-W121°00.23'  
L-2-3, H-3

OAKLAND  
116.8 OAK   
Chan 115  
N37°43.56'-W122°13.42'  
L-2-3, H-3

SAN FRANCISCO  
115.8 SFO   
Chan 105

NORMM  
N37°43.21'  
W122°36.79'



SW-2, 25 FEB 2021 to 25 MAR 2021

SW-2, 25 FEB 2021 to 25 MAR 2021

NOTE: Chart not to scale.

### DEPARTURE ROUTE DESCRIPTION

**TAKEOFF RUNWAYS 1L/R:** Climbing right turn heading 033° or ATC assigned heading to cross SFO 6 DME at or above 3000 for RADAR vectors to assigned route/fix. Expect further clearance to filed altitude 10 minutes after departure.

**TAKEOFF RUNWAYS 28L/R:** Climb on SFO VOR/DME R-281 to NORMM INT/SFO 13 DME; then expect RADAR vectors to assigned route/fix. Expect further clearance to filed altitude 10 minutes after departure.

### LOST COMMUNICATIONS:

If not in contact with departure control after reaching 3000, continue climb to filed altitude and proceed direct to assigned route/fix.

# SAN FRANCISCO FOUR DEPARTURE