

LOC RWY 5

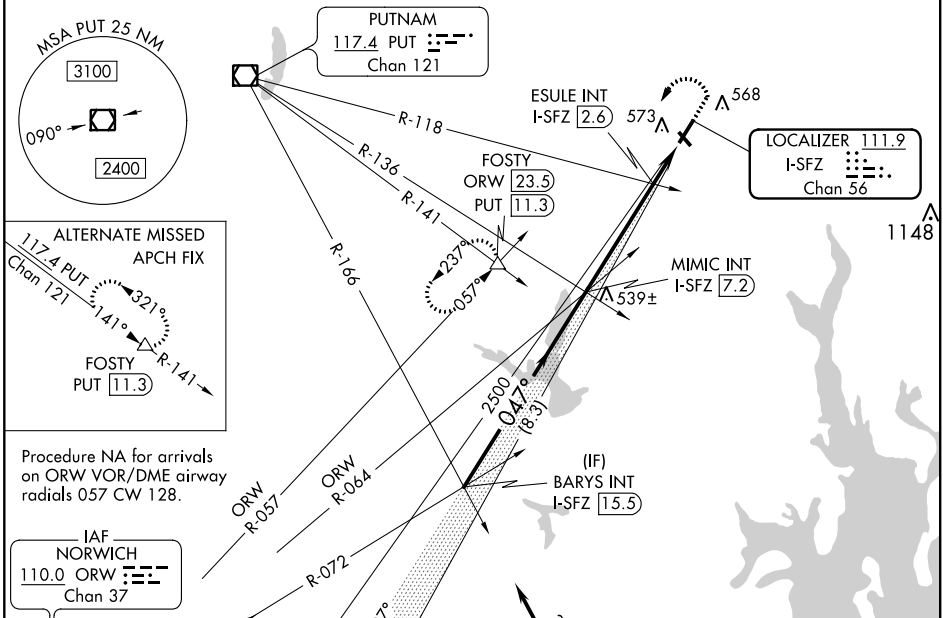
NORTH CENTRAL STATE (SFZ)

LOC/DME I-SFZ 111.9 Chan 56	APP CRS 047°	Rwy Idg 5000 TDZE 429 Apt Elev 441
---	------------------------	---

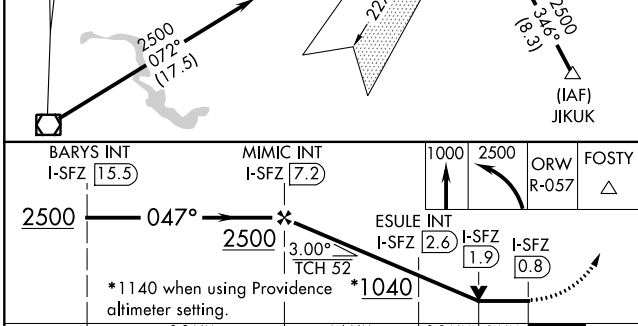
NA Circling Rwy 15, 33 NA at night. VDP NA with Providence altimeter setting. When local altimeter setting not received, use Providence altimeter setting and increase all MDA 100 feet; increase S-5 Cat C and Circling Cat C visibility ¼ mile, and ESULE fix minimums S-5 Cat C visibility ¼ mile.

MALS MISSED APPROACH: Climb to 1000 then climbing left turn to 2500 on ORW VOR/DME R-057 to FOSTY INT/ ORW 23.5 DME and hold.

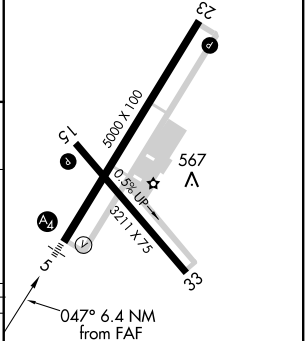
AWOS-3PT 120.775	PROVIDENCE APP CON * 123.675 244.875	CLNC DEL 124.35	UNICOM 123.075 (CTAF) 0
----------------------------	--	---------------------------	-----------------------------------



Procedure NA for arrivals on ORW VOR/DME airway radials 057 CW 128.



ELEV 441	TDZE 429
----------	----------



CATEGORY	A	B	C	D
S-5	1040-¾ 611 (600-¾)		1040-1½ 611 (600-1½)	NA
C CIRCLING	1040-1 599 (600-1)		1040-1¾ 599 (600-1¾)	NA
ESULE FIX MINIMUMS (DUAL VOR RECEIVERS OR DME REQUIRED)				
S-5	800-¾ 371 (400-¾)		800-⅞ 371 (400-⅞)	NA
C CIRCLING	900-1 459 (500-1)		900-1½ 459 (500-1½)	NA

FAF to MAP 6.4 NM					
Knots	60	90	120	150	180
Min:Sec	6:24	4:16	3:12	2:34	2:08

NE-1, 25 FEB 2021 to 25 MAR 2021

NE-1, 25 FEB 2021 to 25 MAR 2021