

WAAS CH 72933 W32A	APP CRS 319°	Rwy Idg TDZE Apt Elev	8000 1268 1268
--	------------------------	-----------------------------	---

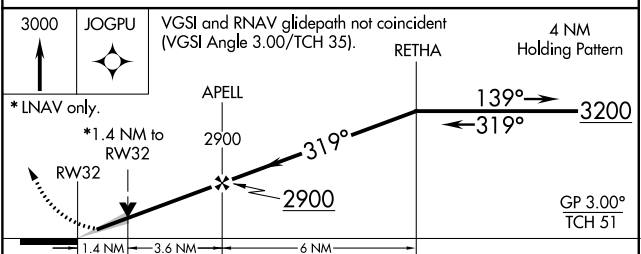
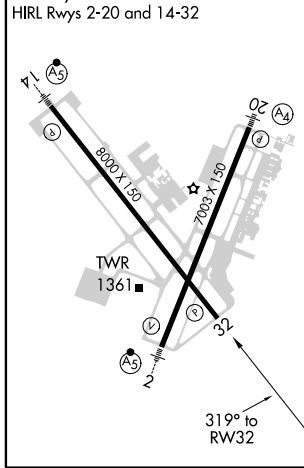
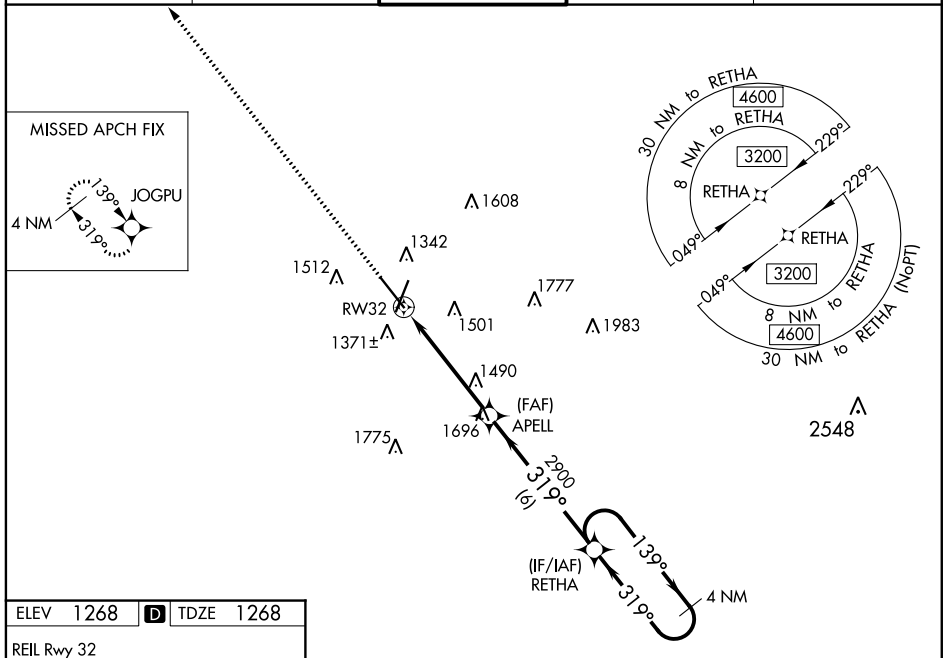
RNAV (GPS) RWY 32

SPRINGFIELD-BRANSON NATIONAL (SGF)

⚠ Baro-VNAV and VDP NA when using Monett altimeter setting. For uncompensated Baro-VNAV systems, LNAV/VNAV NA below -16°C (4°F) or above 54°C (130°F). When local altimeter setting not received, use Monett altimeter setting and increase all DA 90 feet and all MDA 100 feet; increase LPV all Cats visibility 1/8 mile, LNAV/VNAV all Cats 3/8 mile, LNAV Cats C and D 1/4 mile and Circling Cat C 1/4 mile and Cat D 1/2 mile. DME/DME RNP- 0.3 NA.

⚠ MISSED APPROACH: Climb to 3000 direct JOGPU and hold.

ATIS 135.125	SPRINGFIELD APP CON 121.1 290.5	SPRINGFIELD TOWER 119.9 257.8	GND CON 121.9 251.15	CLNC DEL 123.675
------------------------	---	---	--------------------------------	----------------------------



CATEGORY	A	B	C	D
LPV DA		1518-1	250 (300-1)	
LNAV/VNAV DA		1660-1 1/4	392 (400-1 1/4)	
LNAV MDA	1740-1	472 (500-1)	1740-1 3/8	472 (500-1 3/8)
C CIRCLING	1760-1 492 (500-1)	1820-1 552 (600-1)	1820-1 1/2 552 (600-1 1/2)	1920-2 652 (700-2)

NC-3, 25 FEB 2021 to 25 MAR 2021

NC-3, 25 FEB 2021 to 25 MAR 2021