

# DANEI THREE ARRIVAL

AL-107 (FAA)

DAYTON, OHIO

EC-2, 25 FEB 2021 to 25 MAR 2021

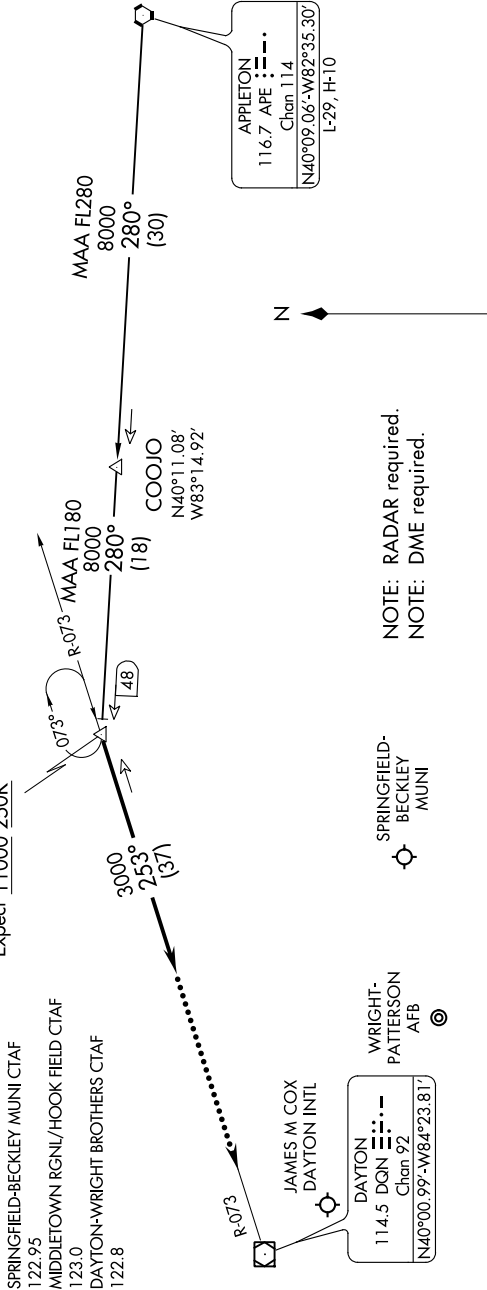
COLUMBUS APP CON  
118.425 323.15  
DAY ATIS  
125.8  
KFO ATIS  
124.475 269.9  
SPRINGFIELD-BECKLEY MUNI CTAF  
122.95  
MIDDLETOWN RGNL/HOOK FIELD CTAF  
123.0  
DAYTON-WRIGHT BROTHERS CTAF  
122.8

DANEI

N40°12.16'-W83°38.36'

### VERTICAL NAVIGATION PLANNING

Expect 11000 250K



NOTE: RADAR required.  
NOTE: DME required.

SPRINGFIELD-BECKLEY MUNI

WRIGHT-PATTERSON AFB

DAYTON-WRIGHT BROTHERS

MIDDLETOWN RGNL/HOOK FIELD

APPLETON TRANSITION (APE:DANEI3): From over APE VORTAC on APE R-280 to DANEI. Thence....

....From over DANEI on heading 253°. Expect RADAR vectors to final approach course.

### LOST COMMUNICATIONS:

In the event of lost communications: At DANEI, proceed direct DQN VOR/DME maintain 3000' until DQN VOR/DME.

NOTE: Chart not to scale.

# DANEI THREE ARRIVAL

(APE.DANEI3) 10OCT19

DAYTON, OHIO

EC-2, 25 FEB 2021 to 25 MAR 2021