

WAAS CH 97615 W24A	APP CRS 238°	Rwy ldg TDZE Apt Elev	9009 1048 1051
----------------------------------------	------------------------	-----------------------------	-------------------------------------------

RNAV (GPS) RWY 24

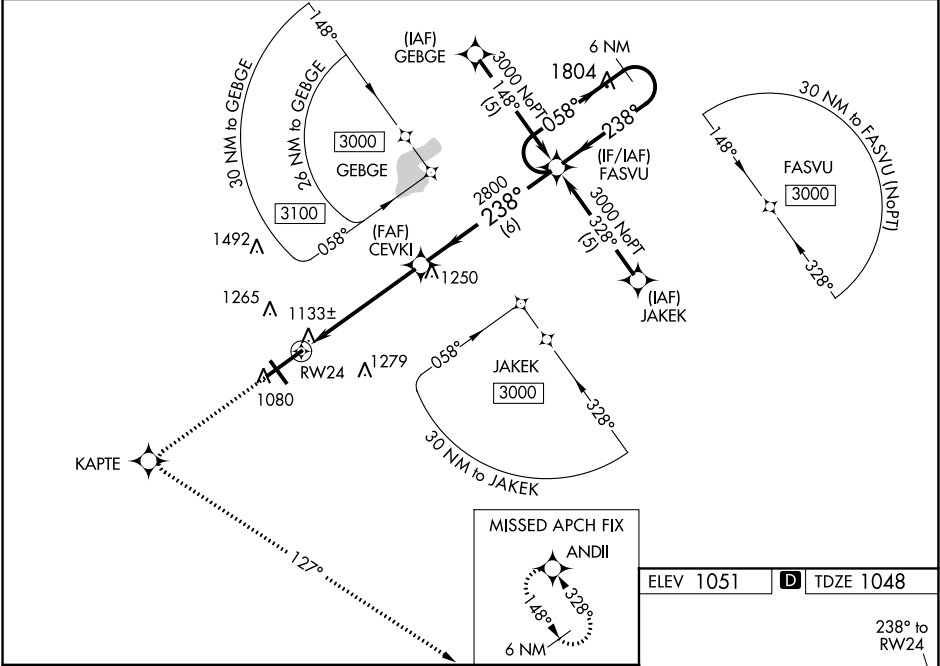
SPRINGFIELD-BECKLEY MUNI (SGH)

⚠ For uncompensated Baro-VNAV systems, LNAV/VNAV NA below -17°C (2°F) or above 47°C (116°F). DME/DME RNP-0.3 NA. When local altimeter setting not received, use Wright-Patterson AFB altimeter setting and increase all DA 55 feet and all MDA 60 feet, LNAV/VNAV all Cats and LNAV Cat C visibilities ¼ mile. For inoperative ALSF-2/SSALR, increase LNAV Cat D visibility to 1¼ mile. For inoperative ALSF-2/SSALR, when using Wright-Patterson AFB altimeter setting, increase LPV all Cats visibility to 1 mile and LNAV Cat D visibility to 1¼ mile. ALSF-2 reverts to SSALR when tower is closed. VDP and Baro-VNAV NA when using Wright-Patterson AFB altimeter setting.

SSALR

MISSED APPROACH:
Climb to 3000 direct KAPTE and left turn via track 127° to ANDII and hold.

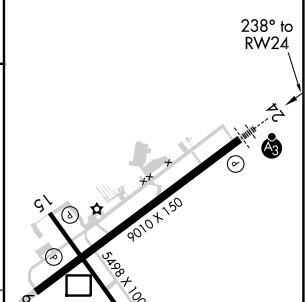
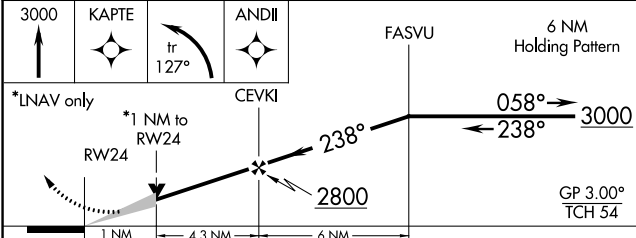
AWOS-3PT 134.975	COLUMBUS APP CON 118.85 269.275	UNICOM 122.95 (CTAF) 0
----------------------------	-------------------------------------------	----------------------------------



EC-2, 25 FEB 2021 to 25 MAR 2021

EC-2, 25 FEB 2021 to 25 MAR 2021

ELEV 1051	D TDZE 1048
-----------	--------------------



CATEGORY	A	B	C	D
LPV DA		1248-½	200 (200-½)	
LNAV/VNAV DA		1398-¾	350 (400-¾)	
LNAV MDA	1400-½	352 (400-½)		1400-1 352 (400-1)
CIRCLING	1480-1 429 (500-1)	1520-1 469 (500-1)	1520-1½ 469 (500-1½)	1620-2 569 (600-2)

HIRL Rwy 6-24 0
MIRL Rwy 15-33 0
REIL Rwy 6, 15 and 33 0