

WAAS CH 58115 W06A	APP CRS 058°	Rwy Idg 9009 TDZE 1051 Apt Elev 1051
--	------------------------	---

RNAV (GPS) RWY 6

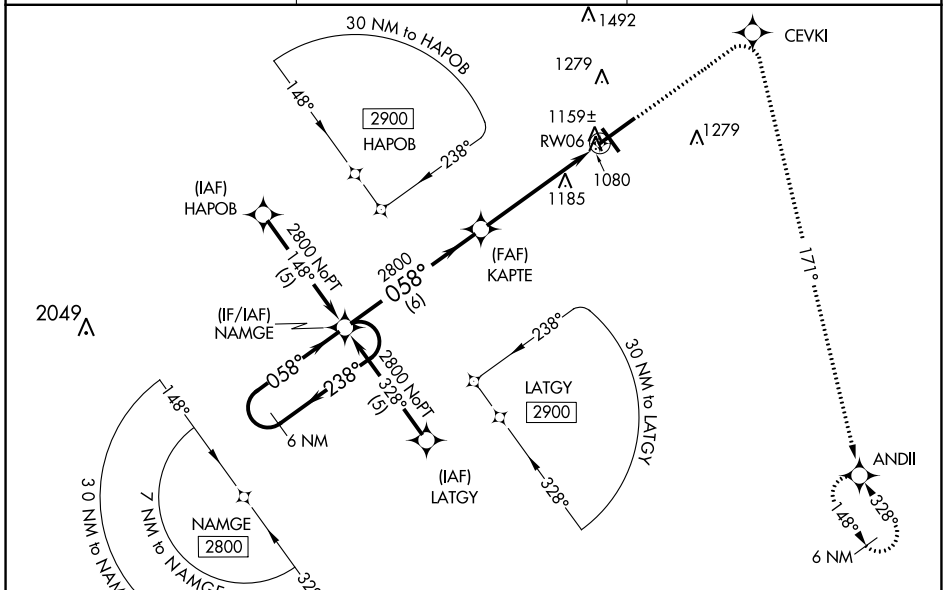
SPRINGFIELD-BECKLEY MUNI (SGH)

⚠ For uncompensated Baro-VNAV systems, LNAV/VNAV NA below -17°C (2°F) or above 46°C (114°F). DME/DME RNP-0.3 NA. Visibility reduction by helicopters NA.

⚠ When local altimeter setting not received, use Wright-Patterson AFB altimeter setting and increase all DA 55 feet and all MDA 60 feet, and increase LPV all Cats, LNAV/VNAV all Cats, and LNAV Cat C visibilities ¼ mile. VDP and Baro-VNAV NA when using Wright-Patterson AFB altimeter setting.

MISSED APPROACH: Climb to 3000 direct CEVKI and right turn via track 171° to ANDII and hold.

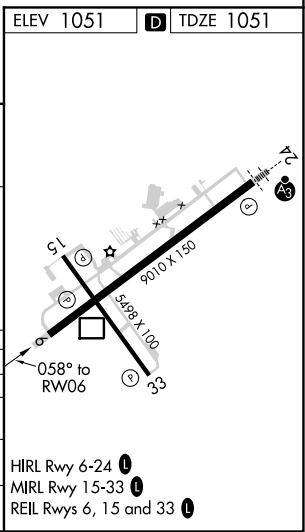
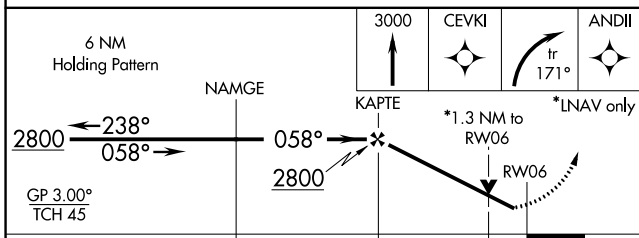
AWOS-3PT 134.975	COLUMBUS APP CON 118.85 269.275	UNICOM 122.95 (CTAF) ①
----------------------------	---	----------------------------------



EC-2, 25 FEB 2021 to 25 MAR 2021

EC-2, 25 FEB 2021 to 25 MAR 2021

ELEV 1051	D TDZE 1051
-----------	--------------------



CATEGORY	A	B	C	D
LPV DA	1354-1 303 (400-1)			
LNAV/VNAV DA	1429-1½ 378 (400-1½)			
LNAV MDA	1500-1	449 (500-1)	1500-1¼ 449 (500-1¼)	1500-1½ 449 (500-1½)
CIRCLING	1500-1 449 (500-1)	1520-1 469 (500-1)	1520-1½ 469 (500-1½)	1620-2 569 (600-2)

HIRL Rwy 6-24 ①
MIRL Rwy 15-33 ①
REIL Rws 6, 15 and 33 ①