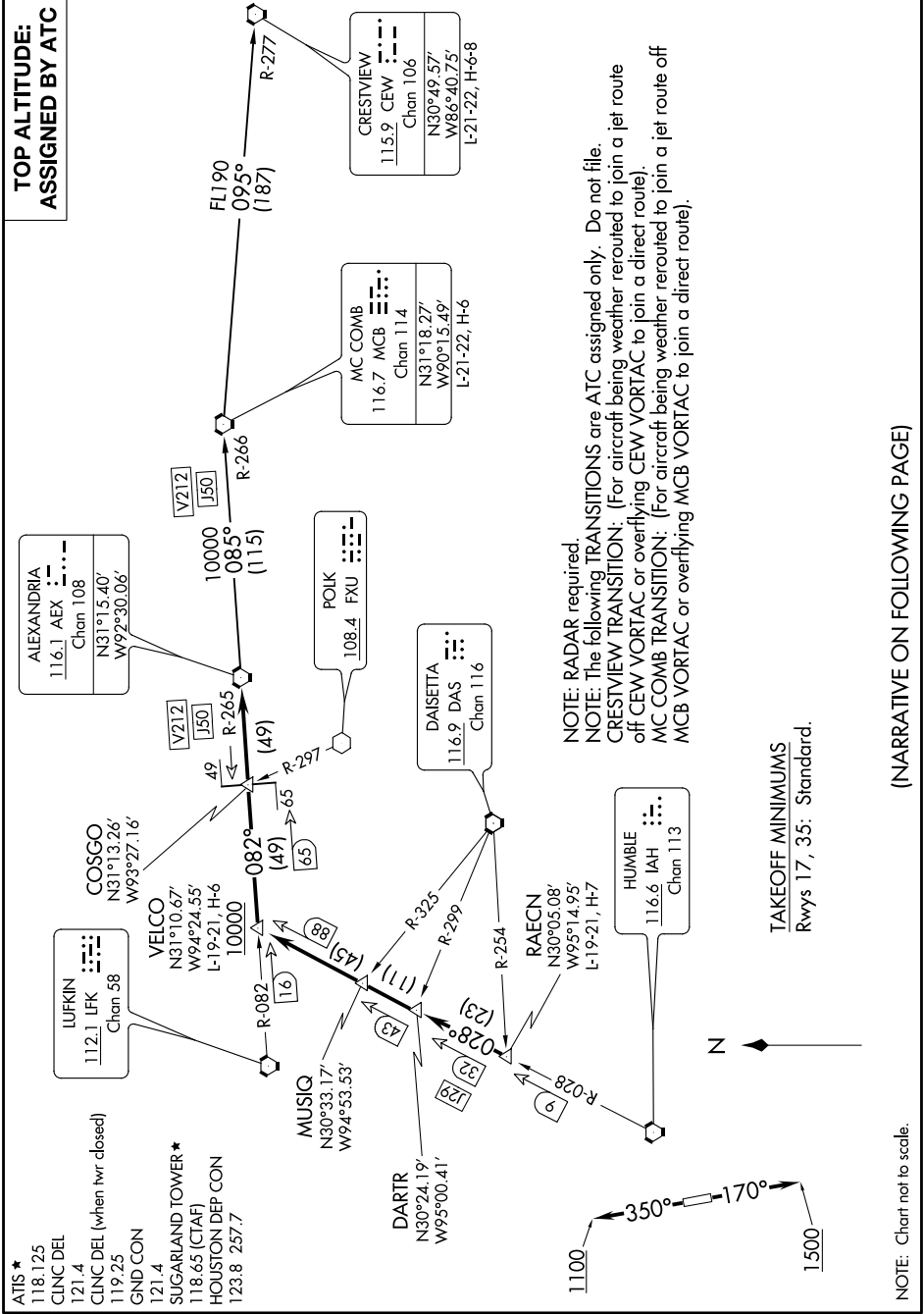


ALEXANDRIA TWO DEPARTURE

SC-5, 25 FEB 2021 to 25 MAR 2021

**TOP ALTITUDE:
ASSIGNED BY ATC**



- ATIS * 118.125
- CINC DEL 121.4
- CINC DEL (when hvr closed) 119.25
- GND CON 121.4
- SUGARLAND TOWER * 118.65 (CTAF)
- HOUSTON DEP CON 123.8 257.7

ALEXANDRIA TWO DEPARTURE

NOTE: RADAR required.
NOTE: The following TRANSITIONS are ATC assigned only. Do not file.
CRESTVIEW TRANSITION: (For aircraft being weather rerouted to join a jet route off CEW VORTAC or overflying CEW VORTAC to join a direct route).
MC COMB TRANSITION: (For aircraft being weather rerouted to join a jet route off MCB VORTAC or overflying MCB VORTAC to join a direct route).

TAKEOFF MINIMUMS
 Rwy 17, 35: Standard.

(NARRATIVE ON FOLLOWING PAGE)

NOTE: Chart not to scale.