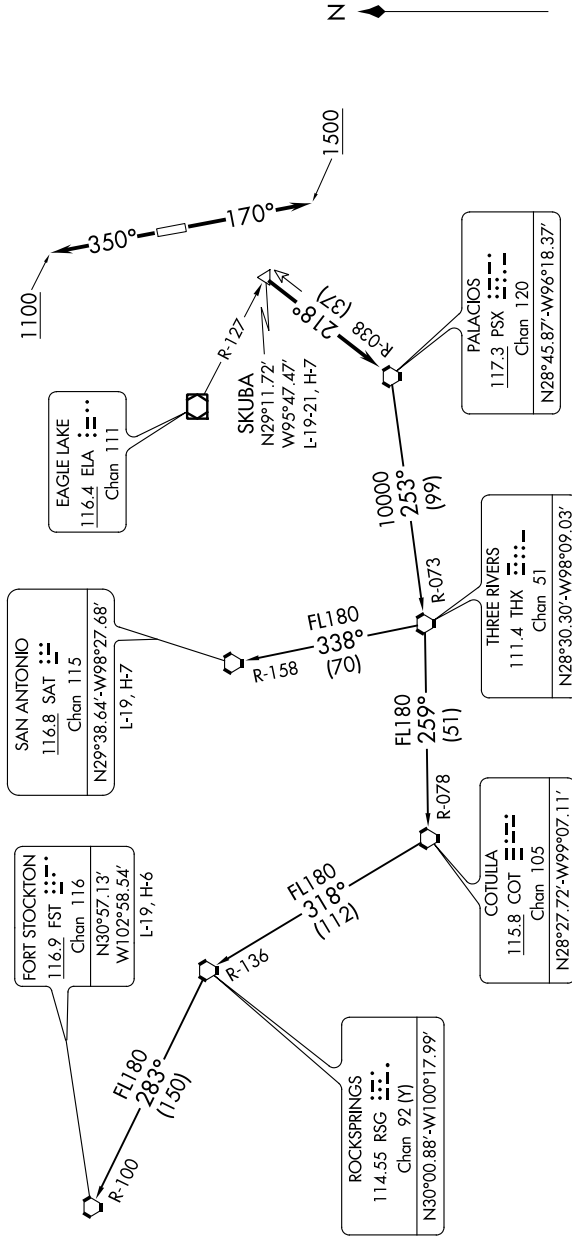


SC-5, 25 FEB 2021 to 25 MAR 2021

TOP ALTITUDE:
ASSIGNED BY ATC

TAKEOFF MINIMUMS
Rwy 17, 35: Standard.

ATIS *
 118.125
 CLNC DEL
 121.4
 CLNC DEL (when twr closed)
 119.25
 GND CON
 121.4
 SUGAR LAND TOWER *
 118.65 (CTAF)
 HOUSTON DEP CON
 123.8 257.7



(NARRATIVE ON FOLLOWING PAGE)

NOTE: RADAR required.
NOTE: Chart not to scale.

SC-5, 25 FEB 2021 to 25 MAR 2021