

WAAS CH <b>56219</b> <b>W35A</b>	APP CRS <b>350°</b>	Rwy Idg TDZE <b>78</b> Apt Elev <b>82</b>	<b>6016</b>
--	------------------------	---	-------------

# RNAV (GPS) RWY 35

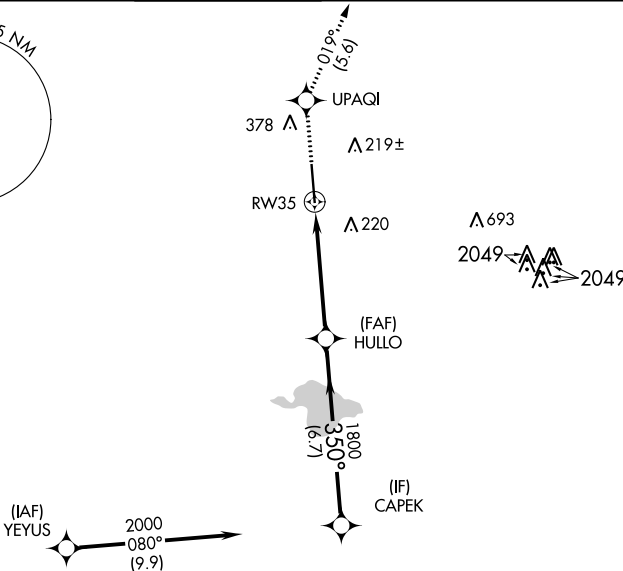
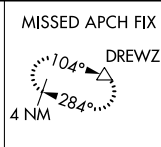
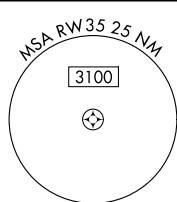
SUGAR LAND RGNL (SGR)

RNP APCH.

▼ For uncompensated Baro-VNAV systems, LNAV/VNAV NA below -15°C (5°F) or above 43°C (109°F).  
 ▲ Baro-VNAV and VDP NA when using William P Hobby altimeter setting. When local altimeter setting not received, use William P Hobby altimeter setting: increase all DA 51 feet; increase all MDA 60 feet and increase LNAV-VNAV all Cats visibility to 1¾, LNAV Cat C/D visibility to 1½, and Circling Cat C visibility to 2, Cat D to 2¼. When VGSI inop, Circling Rwy 17 NA at night.

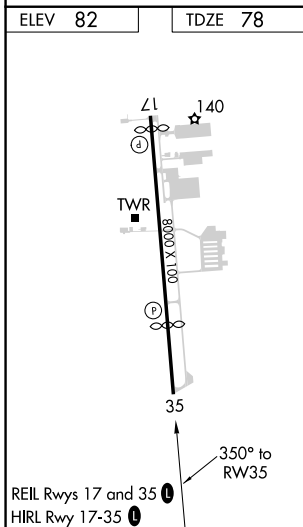
MISSED APPROACH:  
 Climb to 2000 direct UPAQI and on track 019° to DREWZ and hold.

ATIS★ <b>118.125</b>	HOUSTON APP CON <b>123.8 257.7</b>	SUGAR LAND TOWER★ <b>118.65</b> (CTAF) <b>0</b>	GND CON <b>121.4</b>	CLNC DEL <b>121.4</b>	CLNC DEL <b>119.25</b> (when twr closed)	UNICOM <b>122.95</b>
-------------------------	---------------------------------------	--	-------------------------	--------------------------	--	-------------------------



SC-5, 25 FEB 2021 to 25 MAR 2021

SC-5, 25 FEB 2021 to 25 MAR 2021



## RADAR REQUIRED

2000	UPAQI	DREWZ	CAPEK	
↑	✦	tr 019°	△	
* LNAV only.				
* 1.7 NM to RW35		HULLO 1800	2000	
RW35		350°	GP 3.00°	
1.7		3.5 NM	TCH 56	
1.7		6.7 NM		
CATEGORY	A	B	C	D
LPV DA	278-¾ 200 (200-¾)			
LNAV/VNAV DA	567-1½ 489 (500-1½)			
LNAV MDA	660-1	582 (600-1)	660-1¾	582 (600-1¾)
CIRCLING	720-1	638 (700-1)	720-1¾	720-2
			638 (700-1¾)	638 (700-2)