

STRYA SEVEN DEPARTURE (RNAV)

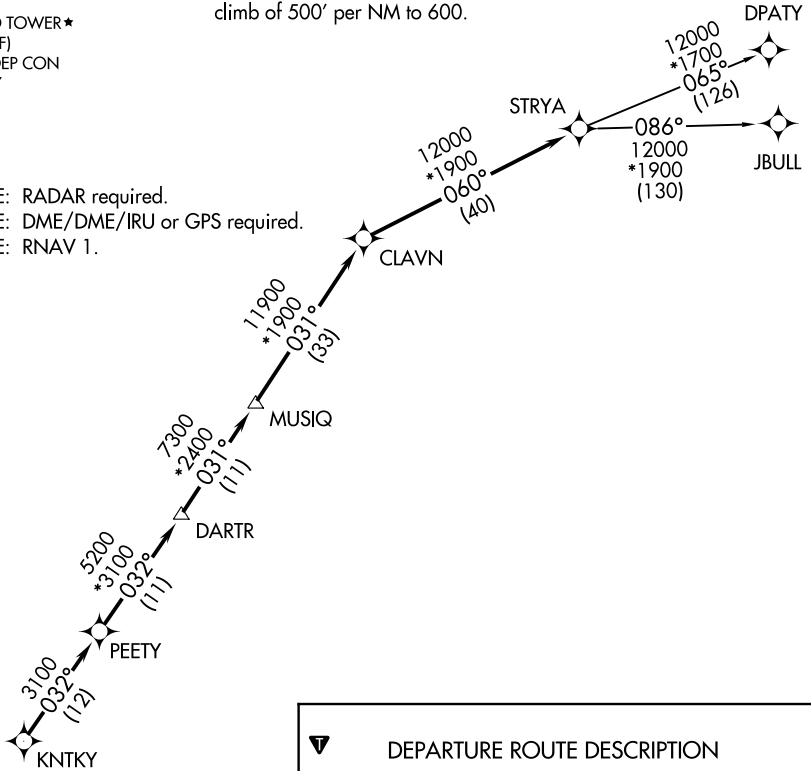
TOP ALTITUDE: ASSIGNED BY ATC

ATIS★
 118.125
 CLNC DEL
 121.4
 CLNC DEL (when twr closed)
 119.25
 GND CON
 121.4
 SUGARLAND TOWER★
 118.65 (CTAF)
 HOUSTON DEP CON
 123.8 257.7

TAKEOFF MINIMUMS

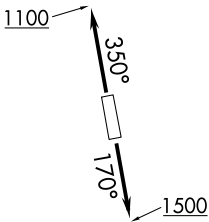
Rwys 17, 35: Standard with minimum climb of 500' per NM to 600.

NOTE: RADAR required.
 NOTE: DME/DME/IRU or GPS required.
 NOTE: RNAV 1.



SC-5, 25 FEB 2021 to 25 MAR 2021

SC-5, 25 FEB 2021 to 25 MAR 2021



NOTE: Chart not to scale.



DEPARTURE ROUTE DESCRIPTION

TAKEOFF RWY 17: Climb heading 170° to 1500 for RADAR vectors to KNTKY, thence . . .

TAKEOFF RWY 35: Climb heading 350° to 1100 for RADAR vectors to KNTKY, thence . . .

. . . on track 032° to PEETY, then on track 032° to DARTR, then on track 031° to MUSIQ, then on track 031° to CLAVN, then on track 060° to STRYA, then on (transition). Maintain ATC assigned altitude. Expect filed altitude 10 minutes after departure.

DPATY TRANSITION (STRYA7.DPATY)

JBULL TRANSITION (STRYA7.JBULL)

STRYA SEVEN DEPARTURE (RNAV)

(STRYA7.STRYA) 25APR19

HOUSTON, TEXAS
SUGAR LAND RGNL (SGR)