

SW-4, 25 FEB 2021 to 25 MAR 2021

**TOP ALTITUDE:
15000**

NOTE: RNAV 1.

NOTE: DME/DME/IRU or GPS required.

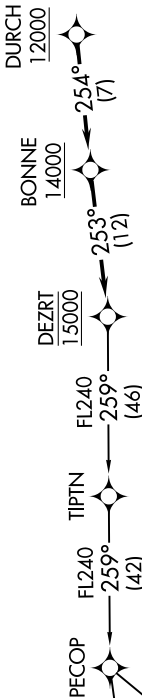
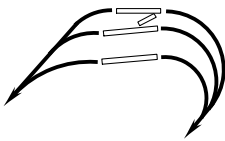
NOTE: RADAR required.

NOTE: Turbostat aircraft only.

NOTE: For non-GPS equipped aircraft: TWF and REO DMEs must be operational for BATTLE MOUNTAIN TRANSITION.



- D-ATIS 124.75 125.625
- CINC DEL 127.3 379.975
- CPDIC
- GND CON 121.9 348.6 (Rwys 14-32, 17-35)
- 123.775 348.6 (Rwys 16L-34R, 16R-34L)
- SALT LAKE CITY TOWER
- 119.05 257.8 (Rwy 16L-34R)
- 118.3 257.8 (Rwy 14-32, 17-35)
- 132.65 336.4 (Rwy 16R-34L)
- SALT LAKE CITY DEP CON 126.25 353.825



TAKEOFF MINIMUMS

Rwys 16L/R, 17: Standard with a minimum climb of 500' per NM to 9700.

Rwys 34L/R, 35: Standard with a minimum climb of 260' per NM to 7800.

Rwys 14, 32: NA-ATC.

NOTE: Chart not to scale.

DEPARTURE ROUTE DESCRIPTION

TAKEOFF RUNWAYS 16L/R, 17: Climbing right turn on a heading between 280° CW 340° as assigned by ATC, thence

TAKEOFF RUNWAYS 34L/R, 35: Climbing left turn on a heading between 320° CCW 260° as assigned by ATC, thence

. . . . on RADAR vectors to cross DURCH at or above 12000, then on track 254° to cross BONNE at or above 14000, then on track 253° to cross DEZRT at 15000, then on (transition). Maintain 15000. Expect filed altitude 10 minutes after departure.

BATTLE MOUNTAIN TRANSITION (DEZRT1.BAM)

MINA TRANSITION (DEZRT1.MVA)

SW-4, 25 FEB 2021 to 25 MAR 2021