

| | | |
|---|------------------------|---|
| LOC/DME I-UAT 111.9 Chan 56 | APP CRS 164° | Rwy ldg 12000 TDZE 4223 Apt Elev 4227 |
|---|------------------------|---|

ILS RWY 16R (CAT II & III)

SALT LAKE CITY INTL (SLC)

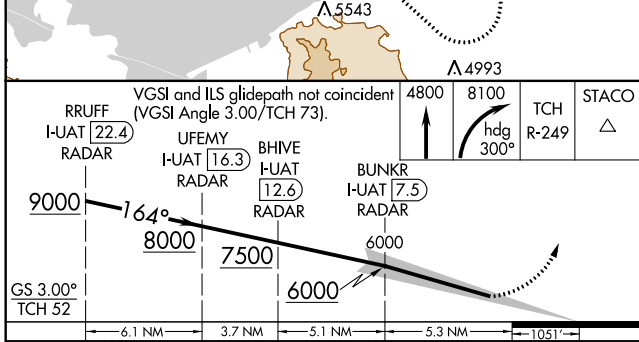
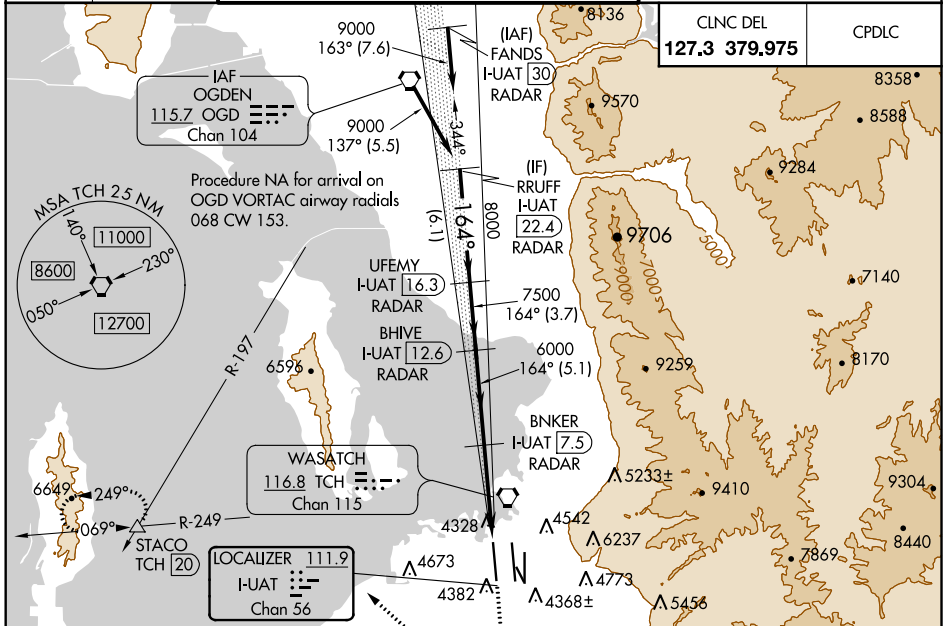
DME or RADAR required.

ALSF-2

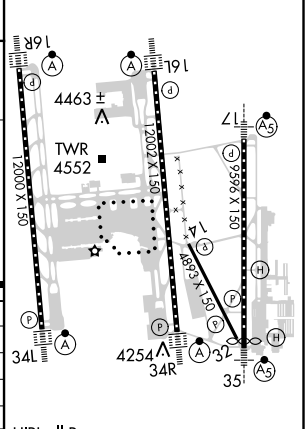
MISSED APPROACH: Climb to 4800 then climbing right turn to 8100 on heading 300° and on TCH VORTAC R-249 to STACO INT/TCH 20 DME and hold.

Simultaneous approach authorized.
CAT II: RVR 1000 authorized with specific OPSPEC, MSPEC, or LOA approval and use of autoland or HUD to touchdown.

| | | | |
|---|--|---|--|
| D-ATIS 124.75 125.625 | SALT LAKE CITY APP CON 125.7 284.6 | SALT LAKE CITY TOWER 119.05 257.8 118.3 257.8 132.65 336.4 (Rwy 16L-34R) (Rwys 14-32, 17-35) (Rwy 16R-34L) | GND CON 121.9 348.6 123.775 348.6 (Rwys 14-32, 17-35) (Rwys 16L-34R, 16R-34L) |
|---|--|---|--|



| | | |
|-----------|---|-----------|
| ELEV 4227 | D | TDZE 4223 |
|-----------|---|-----------|



| CATEGORY | A | B | C | D |
|-----------|------------------------------|---|--------|---|
| S-ILS 16R | CAT II RA 108/12 100 DA 4323 | | | |
| S-ILS 16R | Cat IIIa RVR 07 | | RVR 07 | |
| S-ILS 16R | Cat IIIb RVR 03 | | RVR 03 | |
| S-ILS 16R | Cat IIIc NA | | NA | |

CATEGORY II & III ILS - SPECIAL AIRCREW & AIRCRAFT CERTIFICATION REQUIRED

HIRL all Rwys
TDZ/CL Rwys 16L, 16R, 17, 34L, 34R, and 35

SW-4, 25 FEB 2021 to 25 MAR 2021

SW-4, 25 FEB 2021 to 25 MAR 2021