

LOC/DME I-BNT 111.5 Chan 52	APP CRS 169°	Rwy Idg TDZE Apt Elev	9597 4219 4227
--	------------------------	-----------------------------	---

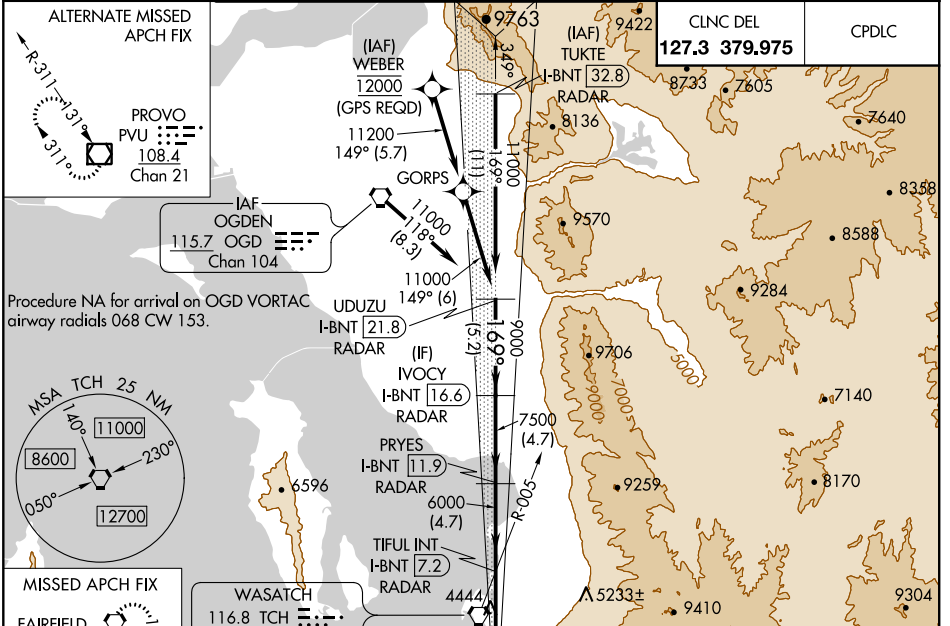
ILS RWY 17 (SA CAT I & II)

SALT LAKE CITY INTL (SLC)

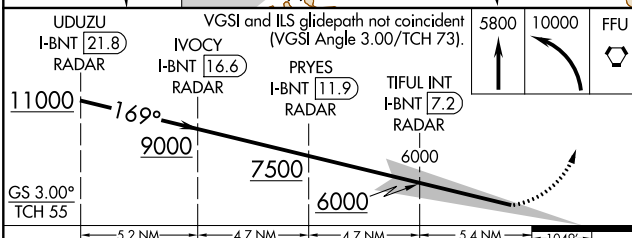
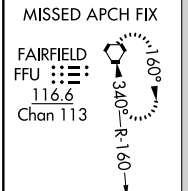
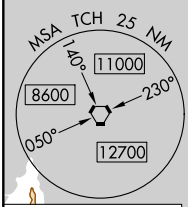
▼ DME or RADAR required. Simultaneous approach authorized. SA CAT I: Requires specific OPSPEC, MSPEC, or LOA approval and use of HUD to DH. SA CAT II: Reduced lighting: Requires specific OPSPEC, MSPEC, or LOA approval and use of autoland or HUD to touchdown.

MALS MISSED APPROACH: Climb to 5800 then climbing left turn to 10000 direct FFU VORTAC and hold.

D-ATIS 124.75 125.625	SALT LAKE CITY APP CON 125.7 284.6	SALT LAKE CITY TOWER 119.05 257.8 118.3 257.8 132.65 336.4 (Rwy 16L-34R) (Rwys 14-32, 17-35) (Rwy 16R-34L)			GND CON 121.9 348.6 123.775 348.6 (Rwys 14-32, 17-35) (Rwys 16L-34R, 16R-34L)	
---	---	---	--	--	--	--



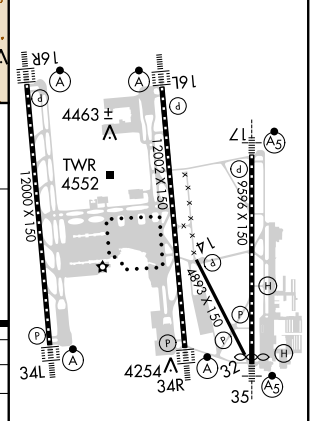
Procedure NA for arrival on OGD VORTAC airway radials 068 CW 153.



UDUZU I-BNT 21.8 RADAR	IVOCY I-BNT 16.6 RADAR	PRYES I-BNT 11.9 RADAR	TIFUL INT I-BNT 7.2 RADAR
5800	10000	FFU	

CLNC DEL 127.3 379.975	CPDLC
----------------------------------	-------

ELEV 4227	D TDZE 4219
-----------	--------------------



SA CATEGORY I & II ILS - SPECIAL AIRCREW & AIRCRAFT CERTIFICATION REQUIRED

HIRL all Rwys
TDZ/CL Rwys 16L, 16R, 17, 35, 34L, and 34R

SW-4, 25 FEB 2021 to 25 MAR 2021

SW-4, 25 FEB 2021 to 25 MAR 2021