

LOC/DME I-UUH 111.9 Chan 56	APP CRS 344°	Rwy Idg TDZE 12000 4226	Apt Elev 4227
--	------------------------	---	-------------------------

ILS RWY 34L (CAT II & III)

SALT LAKE CITY INTL (SLC)

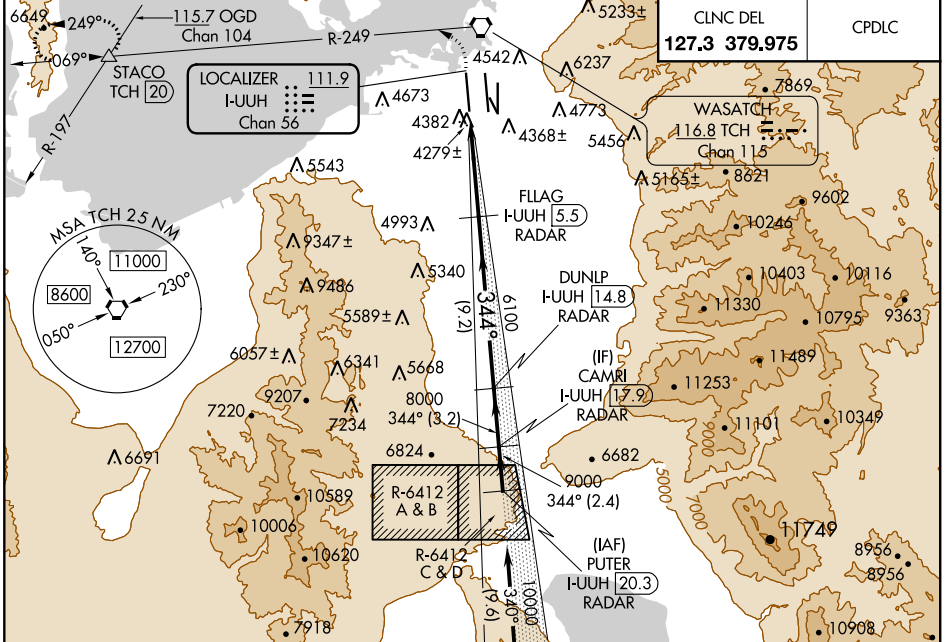
RADAR required for arrivals at PUTER. DME or RADAR required.

Simultaneous approach authorized.
CAT II: RVR 1000 authorized with specific OPSPEC, MSPEC or LOA approval and use of autoland or HUD to touchdown.

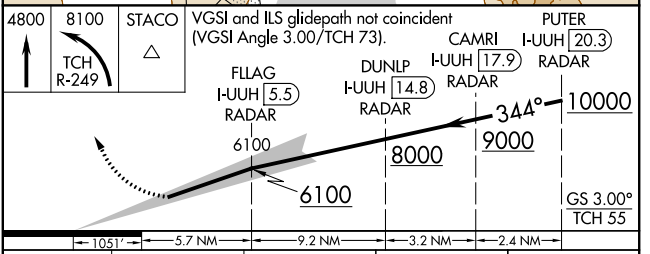
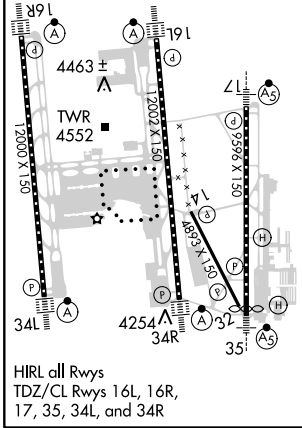
ALSF-2

MISSED APPROACH: Climb to 4800 then climbing left turn to 8100 on TCH VORTAC. R-249 to STACO INT/TCH 20 DME and hold.

D-ATIS 124.75	SALT LAKE CITY APP CON 125.7 284.6	SALT LAKE CITY TOWER 119.05 257.8 (Rwy 16L-34R)	118.3 257.8 (Rwys 14-32, 17-35)	132.65 336.4 (Rwy 16R-34L)	GND CON 121.9 348.6 (Rwys 14-32, 17-35)	123.775 348.6 (Rwys 16L-34R, 16R-34L)
-------------------------	--	--	---	--------------------------------------	--	---



ELEV 4227	TDZE 4226
-----------	-----------



CATEGORY	A	B	C	D
S-ILS 34L	CAT II RA 102/12 100 DA 4326			
S-ILS 34L	CAT IIIa RVR 07			
S-ILS 34L	CAT IIIb RVR 03			
S-ILS 34L	CAT IIIc NA			

CATEGORY II & III ILS - SPECIAL AIRCREW & AIRCRAFT CERTIFICATION REQUIRED

SW-4, 25 FEB 2021 to 25 MAR 2021

SW-4, 25 FEB 2021 to 25 MAR 2021