

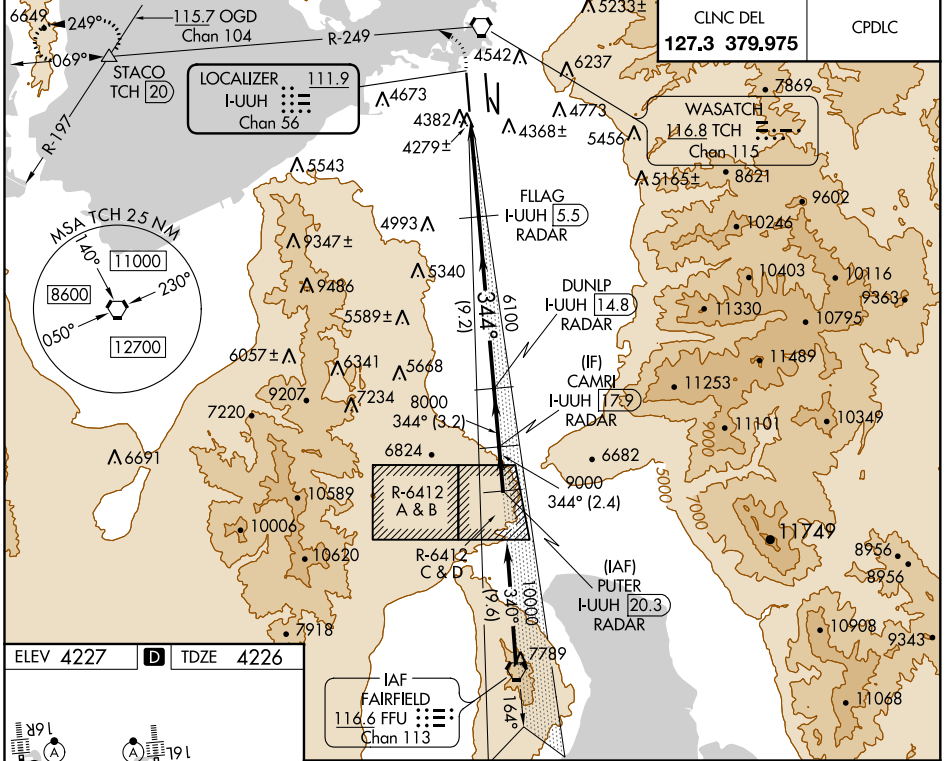
LOC/DME I-UUJH 111.9 Chan 56	APP CRS 344°	Rwy Idg TDZE 12000 4226	Apt Elev 4227
---	------------------------	---	-------------------------

ILS RWY 34L (SA CAT I)

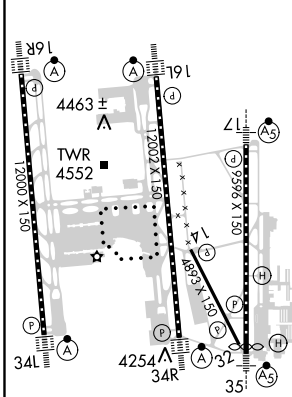
SALT LAKE CITY INTL (SLC)

RADAR required for arrivals at PUTER. DME or RADAR required.		ALS-F-2	MISSED APPROACH: Climb to 4800 then climbing left turn to 8100 on TCH VORTAC R-249 to STACO INT/TCH 20 DME and hold.

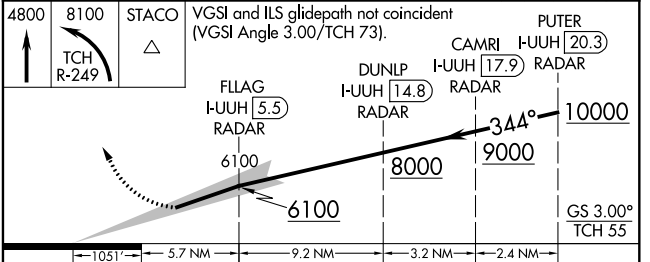
D-ATIS 124.75	SALT LAKE CITY APP CON 125.7 284.6	SALT LAKE CITY TOWER 119.05 257.8 (Rwy 16L-34R) 118.3 257.8 (Rwys 14-32, 17-35) 132.65 336.4 (Rwy 16R-34L)		GND CON 121.9 348.6 (Rwys 14-32, 17-35) 123.775 348.6 (Rwys 16L-34R, 16R-34L)
-------------------------	--	--	--	--



ELEV 4227	D	TDZE 4226
-----------	----------	-----------



HIRL all Rwys
TDZ/CL Rwys 16L, 16R,
17, 35, 34L, and 34R



CATEGORY	A	B	C	D
S-ILS 34L	RA 158/14 150 DA 4376			

SA CATEGORY I ILS - SPECIAL AIRCREW & AIRCRAFT CERTIFICATION REQUIRED

SW-4, 25 FEB 2021 to 25 MAR 2021

SW-4, 25 FEB 2021 to 25 MAR 2021