

LOC/DME I-SLC <b>109.5</b> Chan <b>32</b>	APP CRS <b>344°</b>	Rwy Idg <b>12002</b> TDZE <b>4222</b> Apt Elev <b>4227</b>
---	------------------------	--

# ILS RWY 34R (CAT II & III)

SALT LAKE CITY INTL (SLC)

DME or RADAR Required.

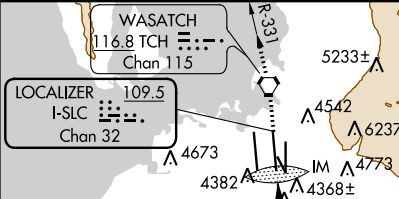
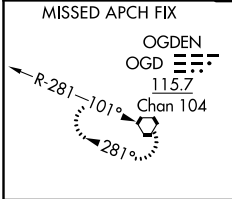
Simultaneous approach authorized.  
CAT II: RVR 1000 authorized with specific OPSPEC, MSPEC, or LOA approval and use of autoland or HUD to touchdown.

ALSF-2

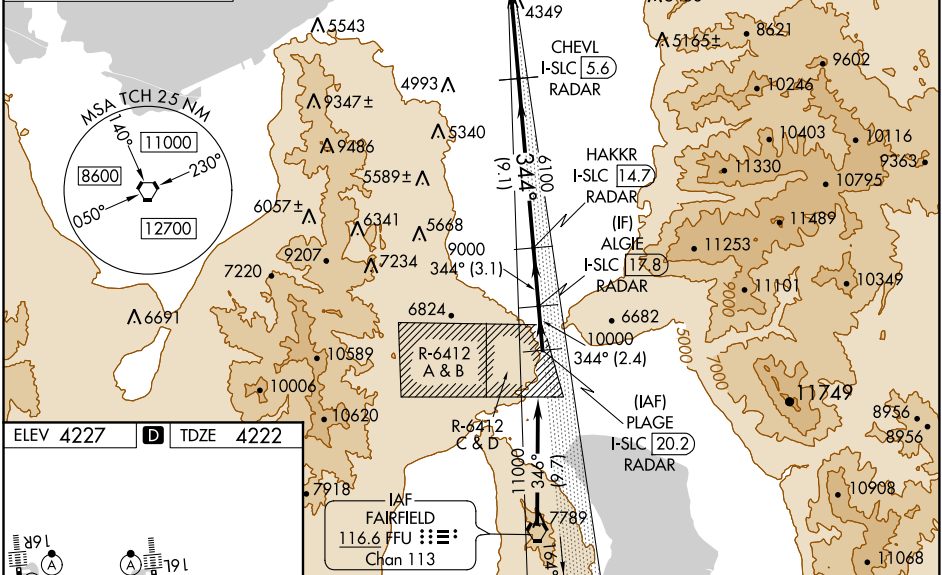


MISSED APPROACH: Climb to 9000 direct TCH VORTAC and on TCH VORTAC R-331 to OGD VORTAC and hold.

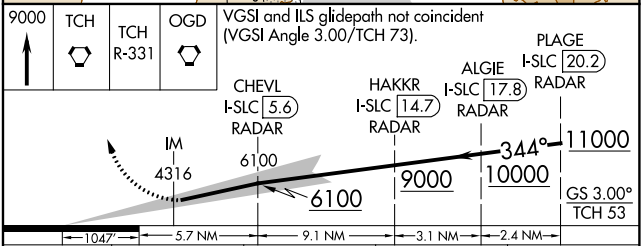
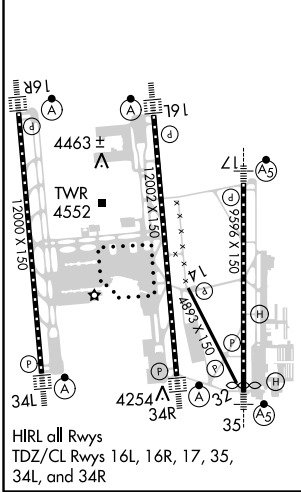
D-ATIS <b>124.75</b> <b>125.625</b>	SALT LAKE CITY APP CON <b>125.7 284.6</b>	SALT LAKE CITY TOWER <b>119.05 257.8 118.3 257.8 132.65 336.4</b> (Rwy 16L-34R) (Rwys 14-32, 17-35) (Rwy 16R-34L)			GND CON <b>121.9 348.6 123.775 348.6</b> (Rwys 14-32, 17-35) (Rwys 16L-34R, 16R-34L)		
---	--	---	--	--	--	--	--



CNLC DEL <b>127.3 379.975</b>	CPDLC
----------------------------------	-------



ELEV 4227	<b>D</b>	TDZE 4222
-----------	----------	-----------



CATEGORY	A	B	C	D
S-ILS 34R	CAT II RA 100/12 100 DA 4322			
S-ILS 34R	CAT III RVR 03			

**CATEGORY II & III ILS - SPECIAL AIRCREW & AIRCRAFT CERTIFICATION REQUIRED**

SW-4, 25 FEB 2021 to 25 MAR 2021

SW-4, 25 FEB 2021 to 25 MAR 2021