

LOC/DME I-MOY 109.5 Chan 32	APP CRS 164°	Rwy Idg TDZE Apt Elev	12002 4227 4227
---	------------------------	-----------------------------	--

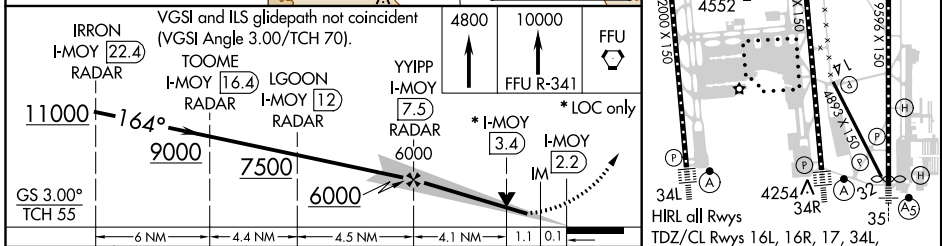
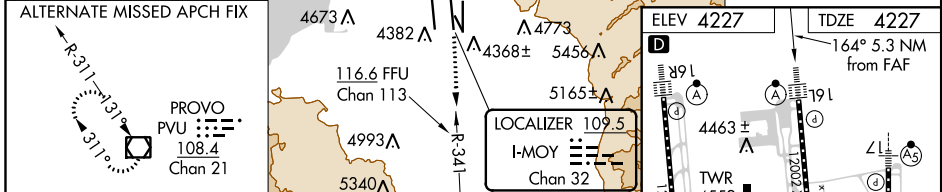
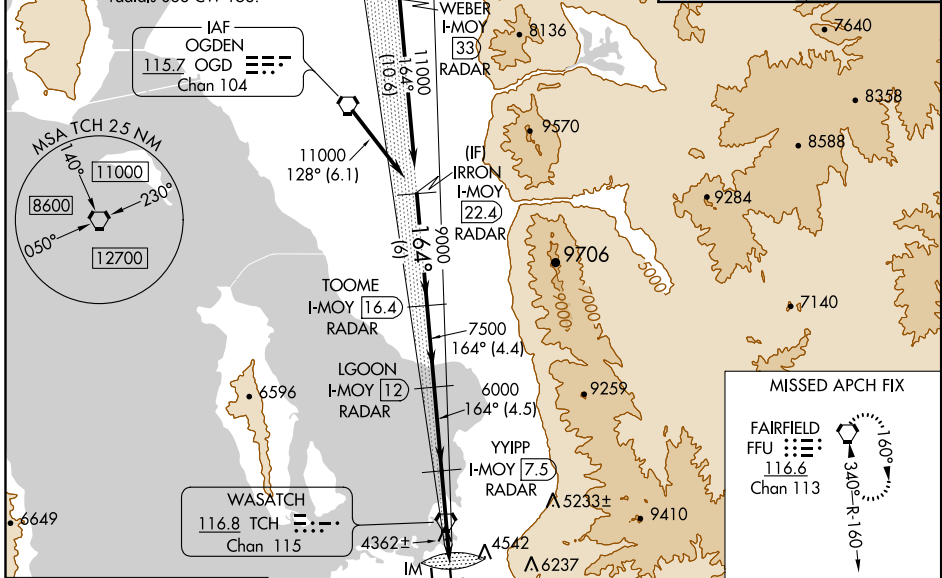
ILS or LOC RWY 16L

SALT LAKE CITY INTL (SLC)

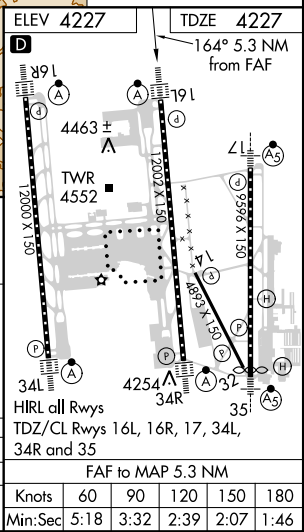
Simultaneous approach authorized. DME or RADAR required.		ALSF-2 	MISSED APPROACH: Climb to 4800 then climb to 10000 via FFU VORTAC R-341 to FFU VORTAC and hold.
---	--	------------	---

D-ATIS 124.75 125.625	SALT LAKE CITY APP CON 125.7 284.6	SALT LAKE CITY TOWER 119.05 257.8 (Rwy 16L-34R)	118.3 257.8 (Rwys 14-32, 17-35)	132.65 336.4 (Rwy 16R-34L)	GND CON 121.9 348.6 (Rwys 14-32, 17-35)	123.775 348.6 (Rwys 16L-34R, 16R-34L)
---	---	--	---	--------------------------------------	--	---

Procedure NA for arrival on OGD VORTAC airway radials 068 CW 153.	CLNC DEL 127.3 379.975	CPDLC
---	----------------------------------	-------



IRRON I-MOY 22.4 RADAR	TOOME I-MOY 16.4 RADAR	LGOON I-MOY 12 RADAR	YYIPP I-MOY 7.5 RADAR	FFU		
VGS1 and ILS glidepath not coincident (VGS1 Angle 3.00/TCH 70).						
GS 3.00° TCH 55	6 NM	4.4 NM	4.5 NM	4.1 NM	1.1 NM	0.1 NM
CATEGORY S-ILS 16L	A	B	C	D		
S-LOC 16L	4680/24	453 (500-½)	4427/18	200 (200-½)	4680/40	4680/50
					453 (500-¾)	453 (500-1)



SW-4, 25 FEB 2021 to 25 MAR 2021

SW-4, 25 FEB 2021 to 25 MAR 2021