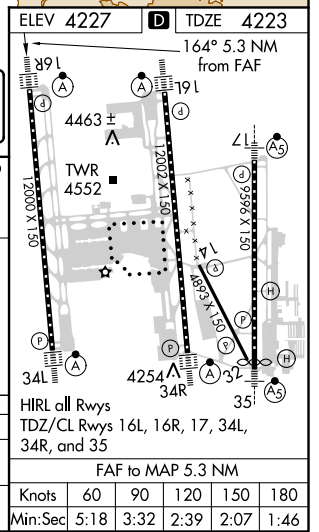
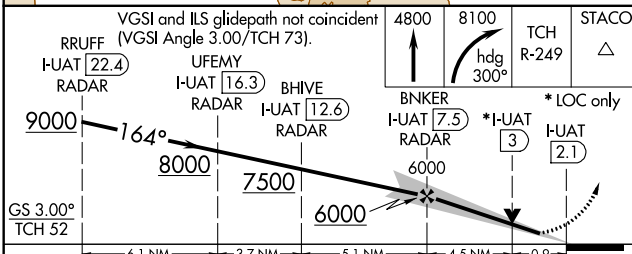
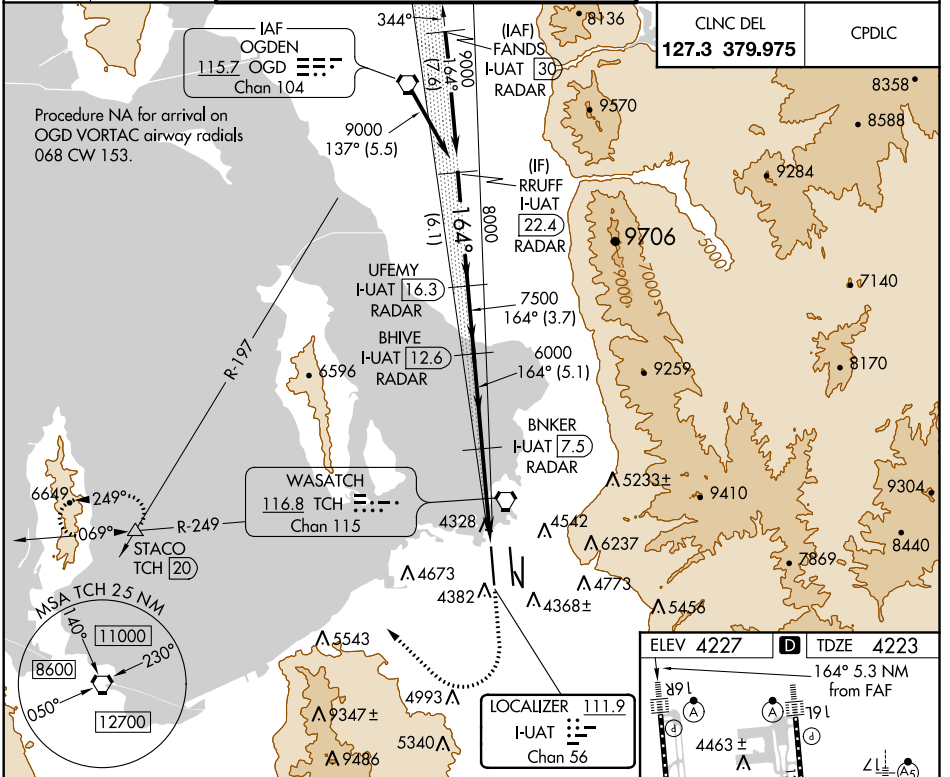


LOC/DME I-UAT <b>111.9</b> Chan <b>56</b>	APP CRS <b>164°</b>	Rwy ldg <b>12000</b> TDZE <b>4223</b> Apt Elev <b>4227</b>
-------------------------------------------------	------------------------	------------------------------------------------------------------

# ILS or LOC RWY 16R

SALT LAKE CITY INTL (SLC)

DME or RADAR required.		ALSF-2	MISSED APPROACH: Climb to 4800 then climbing right turn to 8100 on heading 300° and on TCH VORTAC R-249 to STACO INT/TCH 20 DME and hold.	
<p>Simultaneous approach authorized. For inop ALS, increase S-LOC 16R Cat C and D visibilities to RVR 5500.</p>				
D-ATIS <b>124.75</b> <b>125.625</b>	SALT LAKE CITY APP CON <b>125.7 284.6</b>	SALT LAKE CITY TOWER <b>119.05 257.8</b> (Rwy 16L-34R) <b>118.3 257.8</b> (Rwys 14-32, 17-35) <b>132.65 336.4</b> (Rwy 16R-34L)		GND CON <b>121.9 348.6</b> (Rwys 14-32, 17-35) <b>123.775 348.6</b> (Rwys 16L-34R, 16R-34L)



CATEGORY	A	B	C	D
S-ILS 16R	4423/18		200 (200-½)	
S-LOC 16R	4580/24	357 (400-½)	4580/30 357 (400-¾)	4580/40 357 (400-¾)

FAF to MAP 5.3 NM					
Knots	60	90	120	150	180
Min:Sec	5:18	3:32	2:39	2:07	1:46

SW-4, 25 FEB 2021 to 25 MAR 2021

SW-4, 25 FEB 2021 to 25 MAR 2021