

LOC/DME I-BNT 111.5 Chan 52	APP CRS 169°	Rwy Idg TDZE Apt Elev	9597 4219 4227
--	------------------------	-----------------------------	---

ILS or LOC RWY 17

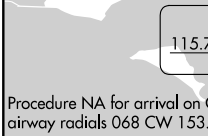
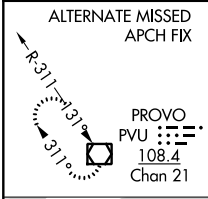
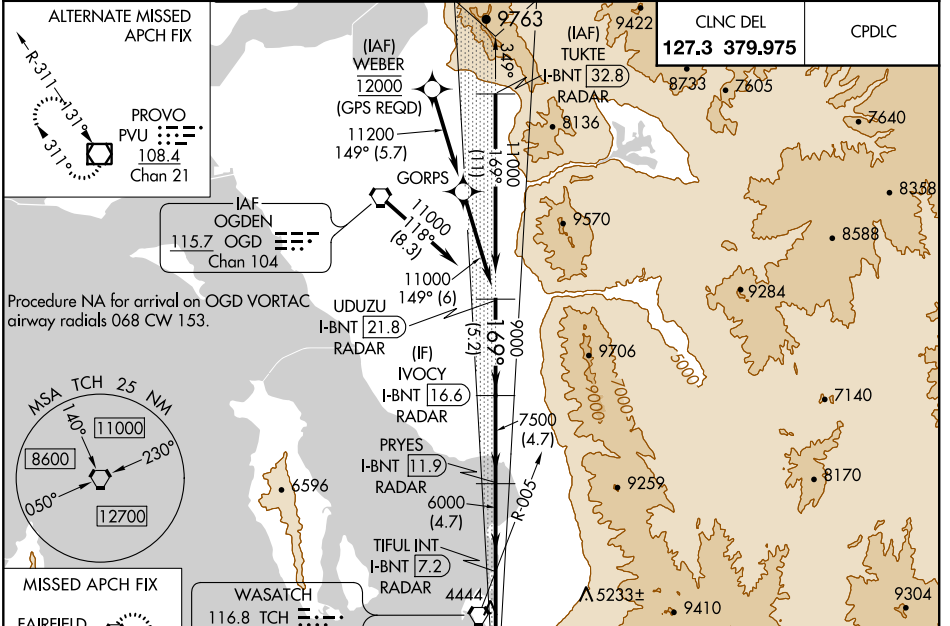
SALT LAKE CITY INTL (SLC)

▼ DME or RADAR required. Simultaneous approach authorized. For inop ALS, increase S-ILS 17 Cat E visibility to RVR 4000, increase S-LOC 17 Cat C/D/E visibility to 1 $\frac{1}{2}$ SM.

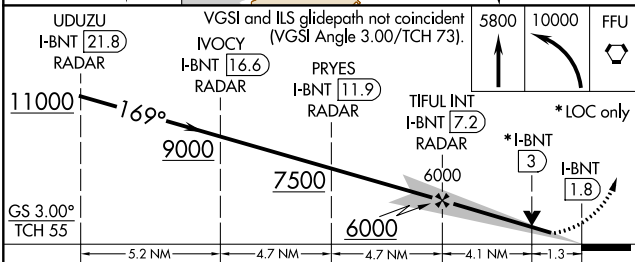
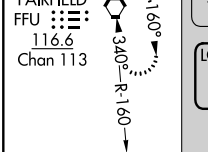
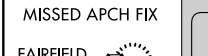
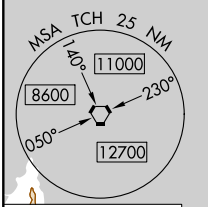


MISSED APPROACH: Climb to 5800 then climbing left turn to 10000 direct FFU VORTAC and hold.

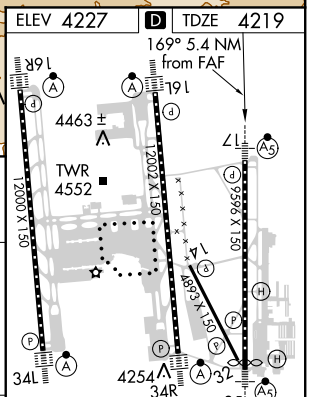
D-ATIS 124.75	SALT LAKE CITY APP CON 125.7 284.6	SALT LAKE CITY TOWER 119.05 257.8 118.3 257.8 132.65 336.4 (Rwys 16L-34R) (Rwys 14-32, 17-35) (Rwy 16R-34L)				GND CON 121.9 348.6 123.775 348.6 (Rwys 14-32, 17-35) (Rwys 16L-34R, 16R-34L)	
-------------------------	--	--	--	--	--	--	--



Procedure NA for arrival on OGD VORTAC airway radials 068 CW 153.



CUNC DEL 127.3 379.975	CPDLC
----------------------------------	-------



UDUZU I-BNT [21.8] RADAR	VGSI and ILS glidepath not coincident (VGSI Angle 3.00/TCH 73).	5800	10000	FFU
IVOCY I-BNT [16.6] RADAR				
PRYES I-BNT [11.9] RADAR				
TIFUL INT I-BNT [7.2] RADAR				
				*LOC only
				*I-BNT [3]
				I-BNT [1.8]

HIRL all Rwys TDZ/CL Rwys 16L, 16R, 17, 35, 34L, and 34R					
FAF to MAP 5.4 NM					
Knots	60	90	120	150	180
Min:Sec	5:24	3:36	2:42	2:10	1:48

SW-4, 25 FEB 2021 to 25 MAR 2021

SW-4, 25 FEB 2021 to 25 MAR 2021