

ILS or LOC RWY 34L

SALT LAKE CITY INTL (SLC)

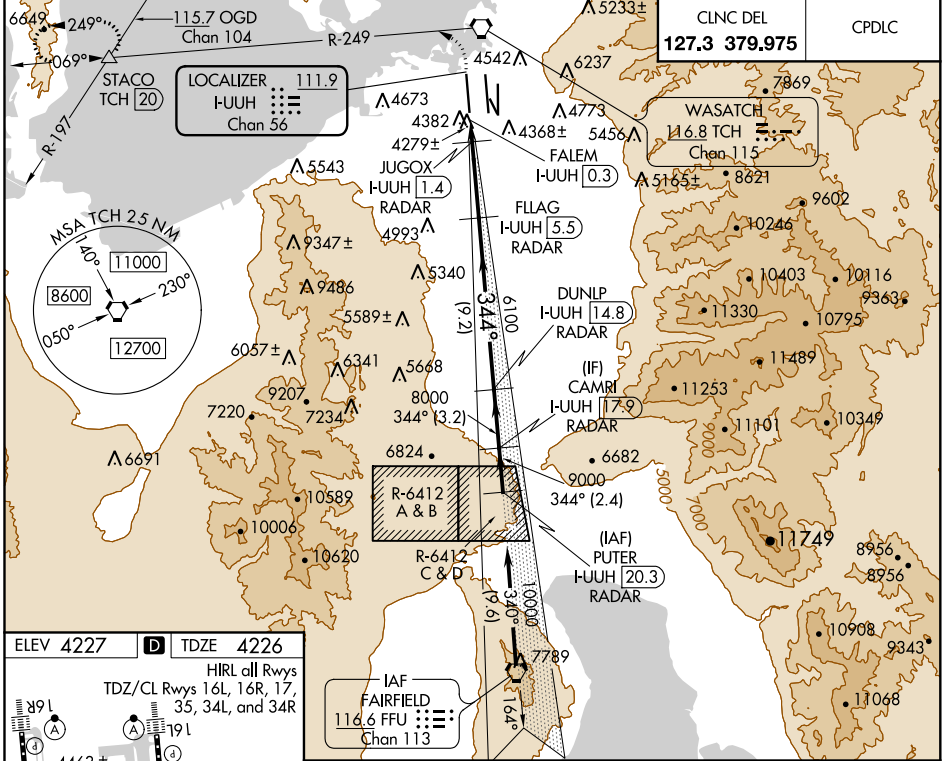
| | | | |
|---|------------------------|---|-------------------------|
| LOC/DME I-UUJH 111.9 Chan 56 | APP CRS 344° | Rwy Idg TDZE 12000 4226 | Apt Elev 4227 |
|---|------------------------|---|-------------------------|

RADAR required for arrivals at PUTER. DME or RADAR required.

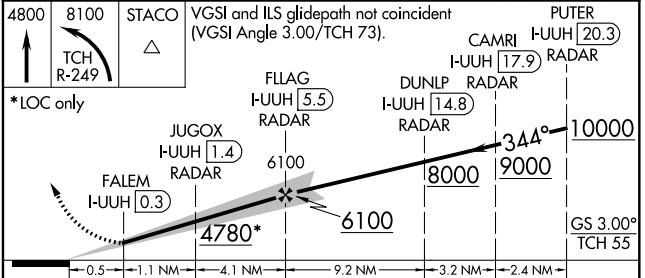
ALSIF-2

MISSED APPROACH: Climb to 4800 then climbing left turn to 8100 on TCH VORTAC R-249 to STACO INT/TCH 20 DME and hold.

| | | | | | |
|---|---|--|--|--|---|
| D-ATIS 124.75 125.625 | SALT LAKE CITY APP CON 125.7 284.6 | SALT LAKE CITY TOWER 119.05 257.8 118.3 257.8 132.65 336.4 (Rwy 16L-34R) (Rwys 14-32, 17-35) (Rwy 16R-34L) | | | GND CON 121.9 348.6 123.775 348.6 (Rwys 14-32, 17-35) (Rwys 16L-34R, 16R-34L) |
|---|---|--|--|--|---|



| | |
|--|--------------------------|
| ELEV 4227 | TDZE 4226 |
| HIRL all Rwys TDZ/CL Rwys 16L, 16R, 17, 35, 34L, and 34R | |
| | |
| FAF to MAP 5.3 NM | |
| Knots | 60 90 120 150 180 |
| Min:Sec | 5:18 3:32 2:39 2:07 1:46 |



| | | | | |
|-----------|---------------------|-------------|---------|-------------|
| CATEGORY | A | B | C | D |
| S-ILS 34L | 4426/18 200 (200-½) | | | |
| S-LOC 34L | 4560/24 | 334 (400-½) | 4560/26 | 334 (400-½) |

SW-4, 25 FEB 2021 to 25 MAR 2021

SW-4, 25 FEB 2021 to 25 MAR 2021