

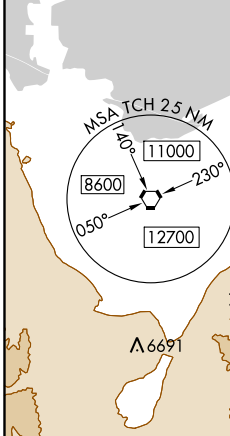
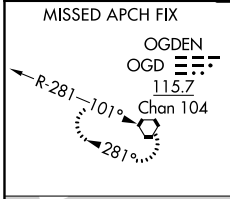
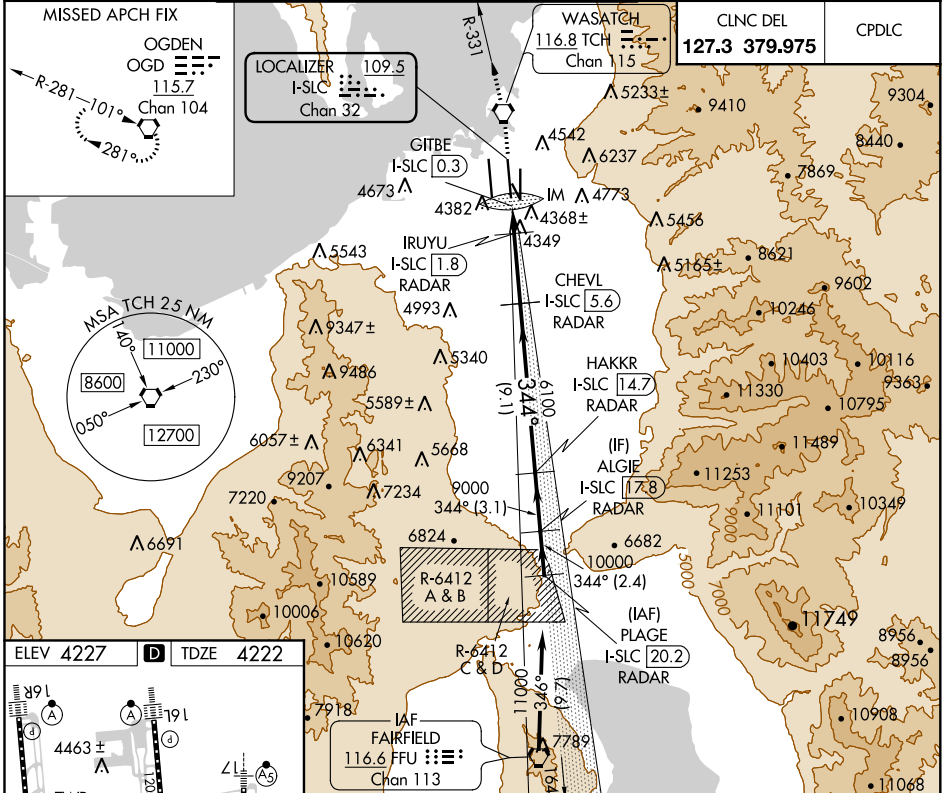
LOC/DME I-SLC 109.5 Chan 32	APP CRS 344°	Rwy Idg 12002 TDZE 4222 Apt Elev 4227
--	------------------------	--

ILS or LOC RWY 34R

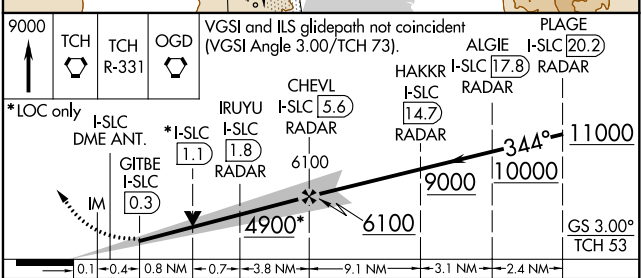
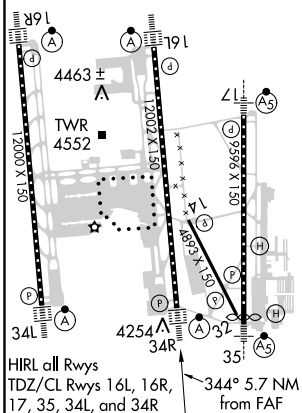
SALT LAKE CITY INTL (SLC)

DME or RADAR Required.		ALSIF-2	MISSED APPROACH: Climb to 9000 direct TCH VORTAC and on TCH VORTAC R-331 to OGD VORTAC and hold.
Simultaneous approach authorized.			

D-ATIS 124.75 125.625	SALT LAKE CITY APP CON 125.7 284.6	SALT LAKE CITY TOWER 119.05 257.8 (Rwy 16L-34R)	118.3 257.8 (Rwys 14-32, 17-35)	132.65 336.4 (Rwy 16R-34L)	GND CON 121.9 348.6 (Rwys 14-32, 17-35)	123.775 348.6 (Rwys 16L-34R, 16R-34L)
---	--	--	---	--------------------------------------	--	---



ELEV 4227	D	TDZE 4222
-----------	----------	-----------



CATEGORY	A	B	C	D
S-ILS 34R		4422/18	200 (200-1/2)	
S-LOC 34R		4700/24	478 (500-1/2)	

SW-4, 25 FEB 2021 to 25 MAR 2021

SW-4, 25 FEB 2021 to 25 MAR 2021