

LOC/DME I-UTJ <b>111.5</b> Chan 52	APP CRS <b>344°</b>	Rwy Idg TDZE Apt Elev	<b>9273</b> <b>4224</b> <b>4227</b>
--	------------------------	-----------------------------	---

# LDA RWY 35

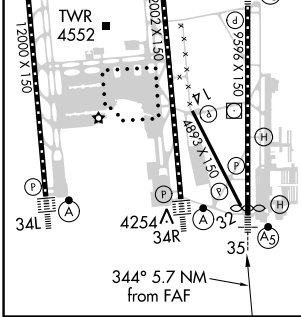
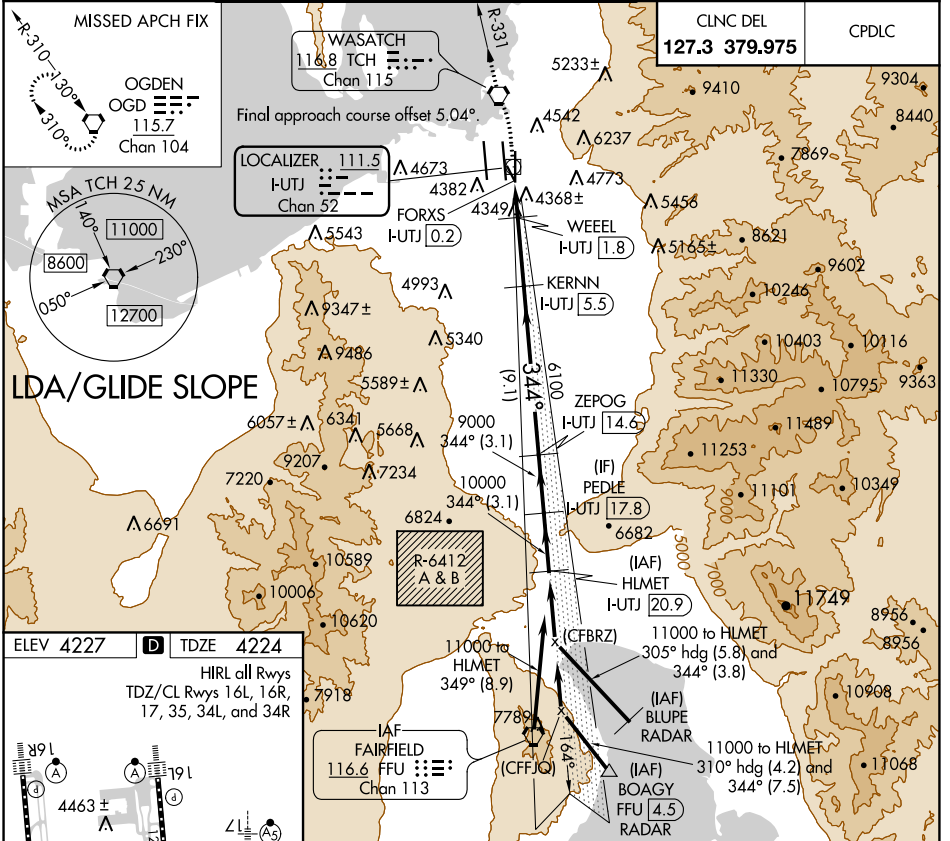
SALT LAKE CITY INTL (SLC)

Simultaneous approach authorized. DME required.  
For inop ALS, increase S-LDA/GS 35 Cat E visibility to RVR 4000, increase S-LDA 35 Cat E visibility to 1 1/4 SM.

MALS R-331

MISSED APPROACH: Climb to 4800 then climbing left turn to 9000 direct TCH VORTAC and on TCH VORTAC R-331 to OGD VORTAC and hold.

D-ATIS <b>124.75</b> <b>125.625</b>	SALT LAKE CITY APP CON <b>125.7 284.6</b>	SALT LAKE CITY TOWER <b>119.05 257.8 118.3 257.8 132.65 336.4</b> (Rwy 16L-34R) (Rwys 14-32, 17-35) (Rwy 16R-34L)			GND CON <b>121.9 348.6 123.775 348.6</b> (Rwys 14-32, 17-35) (Rwys 16L-34R, 16R-34L)	
---	--	---	--	--	--	--



4800	9000	TCH	TCH R-331	OGD	VGSI and LDA glidepath not coincident (VGSI Angle 3.00/TCH 74).
*LDA only	I-UTJ DME ANT.	WEHEEL I-UTJ 1.8	KERNN I-UTJ 5.5	ZEPOG I-UTJ 14.6	PEDE I-UTJ 17.8
	FORXS I-UTJ 0.2	*I-UTJ 0.9	6100	9000	11000
			4900*	10000	GS 3.00° TCH 55
	1.1 NM	0.9 NM	3.7 NM	9.1 NM	3.1 NM
CATEGORY	A	B	C	D	E
S-LDA/GS 35	4474/24 250 (300-1/2)				
S-LDA 35	4660/24	436 (500-1/2)	4660/40	436 (500-3/4)	

SW-4, 25 FEB 2021 to 25 MAR 2021

SW-4, 25 FEB 2021 to 25 MAR 2021