

APP CRS	Rwy Idg	<b>12002</b>
<b>164°</b>	TDZE	<b>4227</b>
	Apt Elev	<b>4227</b>

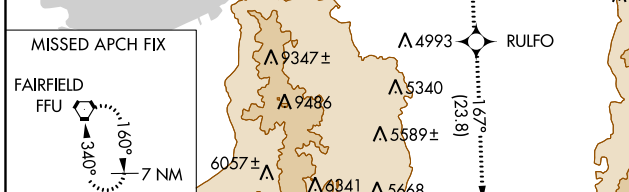
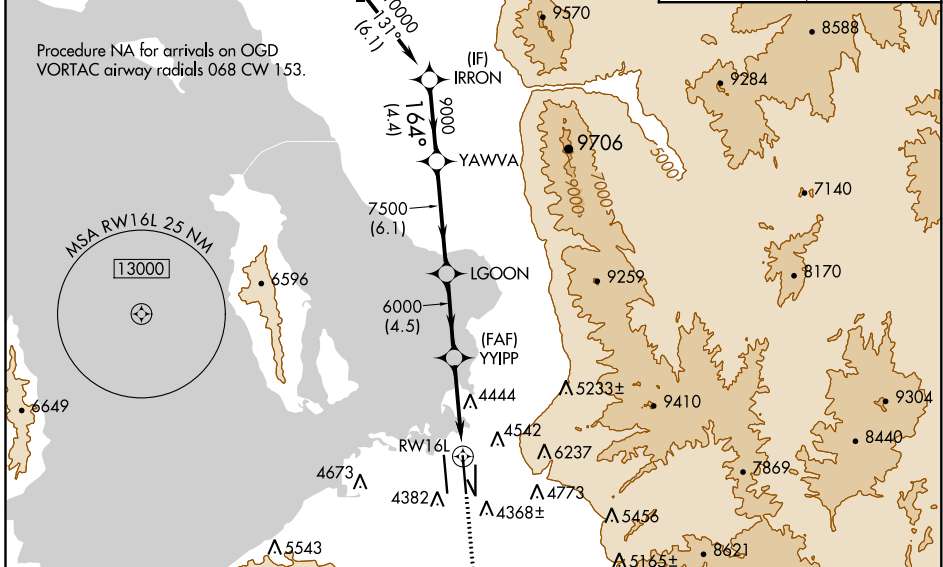
# RNAV (GPS) RWY 16L

SALT LAKE CITY INTL (SLC)

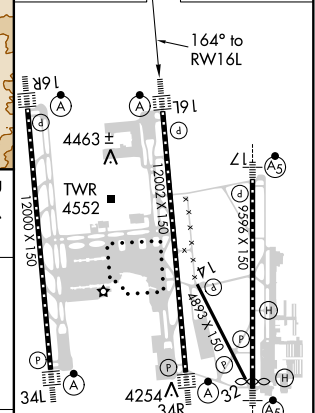
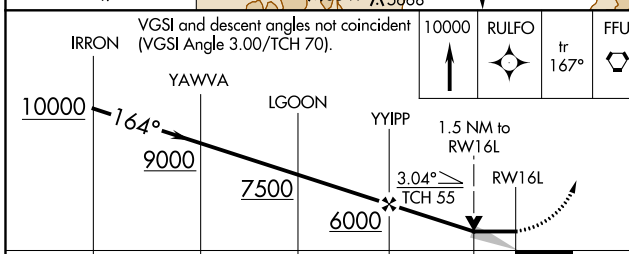
	DME/DME RNP- 0.3 NA. For inop ALS, increase LNAV Cat E visibility to 2 SM.	MISSED APPROACH: Climb to 10000 direct RULFO and on track 167° to FFU VORTAC and hold.

D-ATIS <b>124.75</b> <b>125.625</b>	SALT LAKE CITY APP CON <b>125.7 284.6</b>	SALT LAKE CITY TOWER <b>119.05 257.8</b> (Rwy 16L-34R) <b>118.3 257.8</b> (Rwys 14-32, 17-35) <b>132.65 336.4</b> (Rwy 16R-34L)			GND CON <b>121.9 348.6</b> (Rwys 14-32, 17-35) <b>123.775 348.6</b> (Rwys 16L-34R, 16R-34L)
---	---	--	--	--	---

(IAF) OGDEN OGD 1000 (6.1)	(IF) IRRON 9000 164° (4.4)	CLNC DEL <b>127.3 379.975</b>	CPDLC
--	--	----------------------------------	-------



ELEV 4227	TDZE 4227
-----------	-----------



CATEGORY	A	B	C	D	E
LNAV MDA	4760/24	533 (600-½)	4760/50 533 (600-1)	4760/60 533 (600-1½)	4760-1½ 533 (600-1½)

HIRL all Rwys  
TDZ/CL Rwys 16L, 16R, 17, 35,  
34L, and 34R

SW-4, 25 FEB 2021 to 25 MAR 2021

SW-4, 25 FEB 2021 to 25 MAR 2021