

RNAV (GPS) RWY 16R

SALT LAKE CITY INTL (SLC)

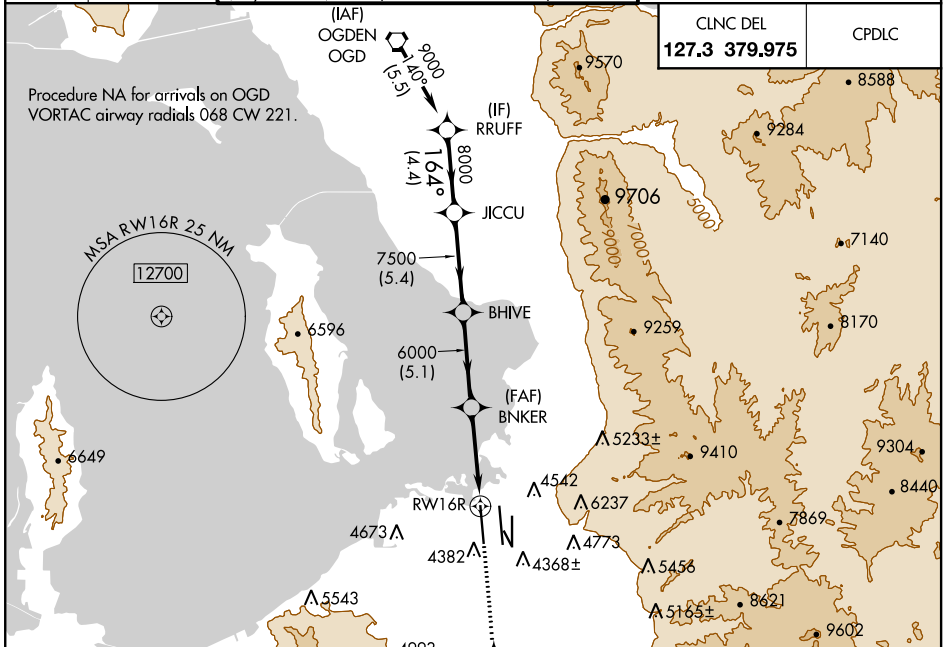
APP CRS	Rwy Idg	12000
164°	TDZE	4223
	Apt Elev	4227

▽ DME/DME RNP-0.3 NA.
For inop ALS, increase LNAV Cat E visibility to 1 3/4 SM.

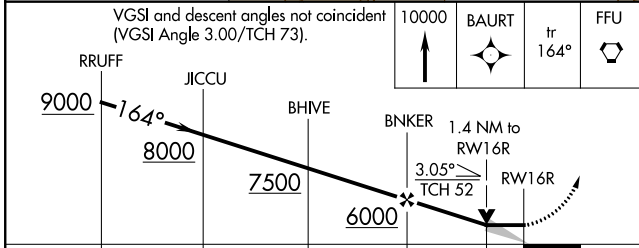
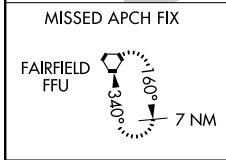
ALSF-2

MISSED APPROACH: Climb to 10000 direct BAURT and on track 164° to FFU VORTAC and hold.

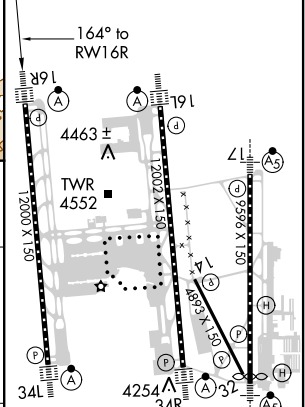
D-ATIS	SALT LAKE CITY APP CON	SALT LAKE CITY TOWER			GND CON		
124.75	125.7 284.6	119.05 257.8	118.3 257.8	132.65 336.4	121.9 348.6	123.775 348.6	
		(Rwy 16L-34R)	(Rwys 14-32, 17-35)	(Rwy 16R-34L)	(Rwys 14-32, 17-35)	(Rwys 16L-34R, 16R-34L)	



CLNC DEL	CPDLC
127.3 379.975	



ELEV 4227	D TDZE 4223
-----------	--------------------



CATEGORY	A	B	C	D	E
LNAV MDA	4740/24	517 (600-1/2)	4740/50 517 (600-1)	4740/60	517 (600-1 1/4)

SW-4, 25 FEB 2021 to 25 MAR 2021

SW-4, 25 FEB 2021 to 25 MAR 2021